

ASSESSOR-RECORDER'S OFFICE

© COPYRIGHT SAN FRANCISCO  
CITY & COUNTY ASSESSOR 1995

1090

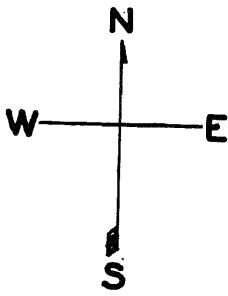
JUNIPERO HD TR BLK C

LOTS MERGED

LOTS INTO LOT

30 " 1 - 56  
25 " 24 - "  
19 36/38 '83  
20 33/35 '84

lot13 into lots43&44 for 2001 roll  
lot21 into lots48/50 for 2001 roll  
lot12 into lots45/47 for 2002 roll

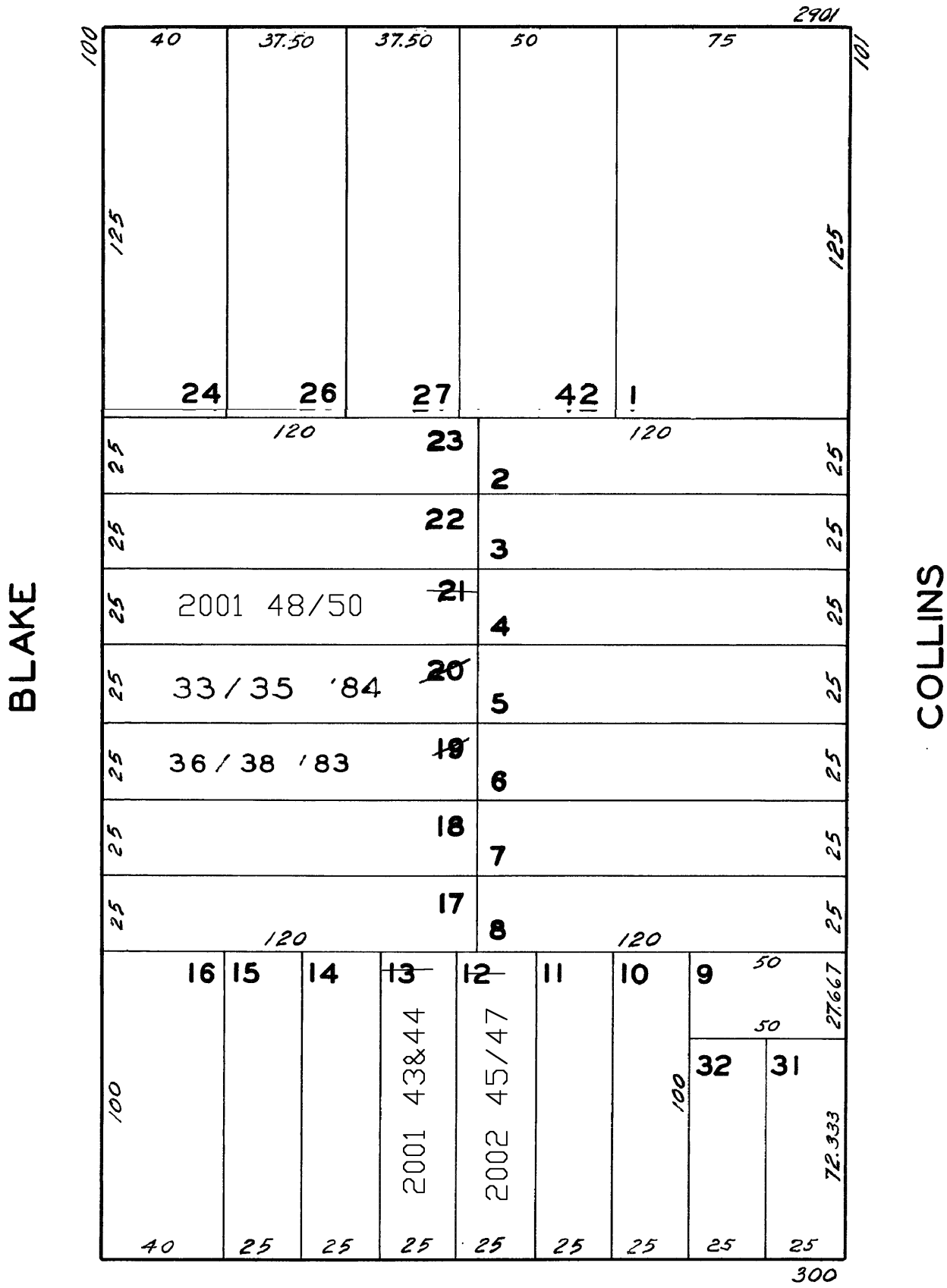


REVISED '60

" '82  
" '83  
" '84

Revised 2001  
Revised 2002

GEARY BLVD



324 ANZA ST.			
A CONDOMINIUM			
LOT	UNIT	% COMM.	AREA
45	1	39.66	
46	2	39.66	
47	3	20.68	

330 ANZA ST.			
A CONDOMINIUM			
LOT	UNIT	% COMM.	AREA
43	1	68.94	
44	2	31.06	

146 BLAKE ST.			
A CONDOMINIUM			
LOT	UNIT	% COMM.	AREA
48	1	33.76	
49	2	34.17	
50	3	32.07	

ANZA

150 BLAKE ST.			
A CONDOMINIUM			
LOT	UNIT	% COMM.	AREA
36	201	23.64	
37	202	25.00	
38	301	51.36	

148 BLAKE ST.			
A CONDOMINIUM			
LOT	UNIT	% COMM.	AREA
33	1	34.91	
34	2	34.91	
35	3	30.18	