

ASSESSOR-RECORDER'S OFFICE

© COPYRIGHT SAN FRANCISCO
CITY & COUNTY ASSESSOR 1995

1126

W A BLK 508

LOTS MERGED

LOTS INTO LOT

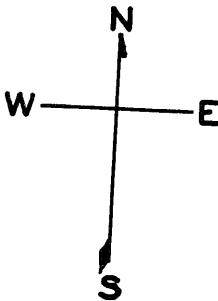
11 " 35/37 1984

LOT 4 FROM S.F.R.A. INTO PRIVATE - '89

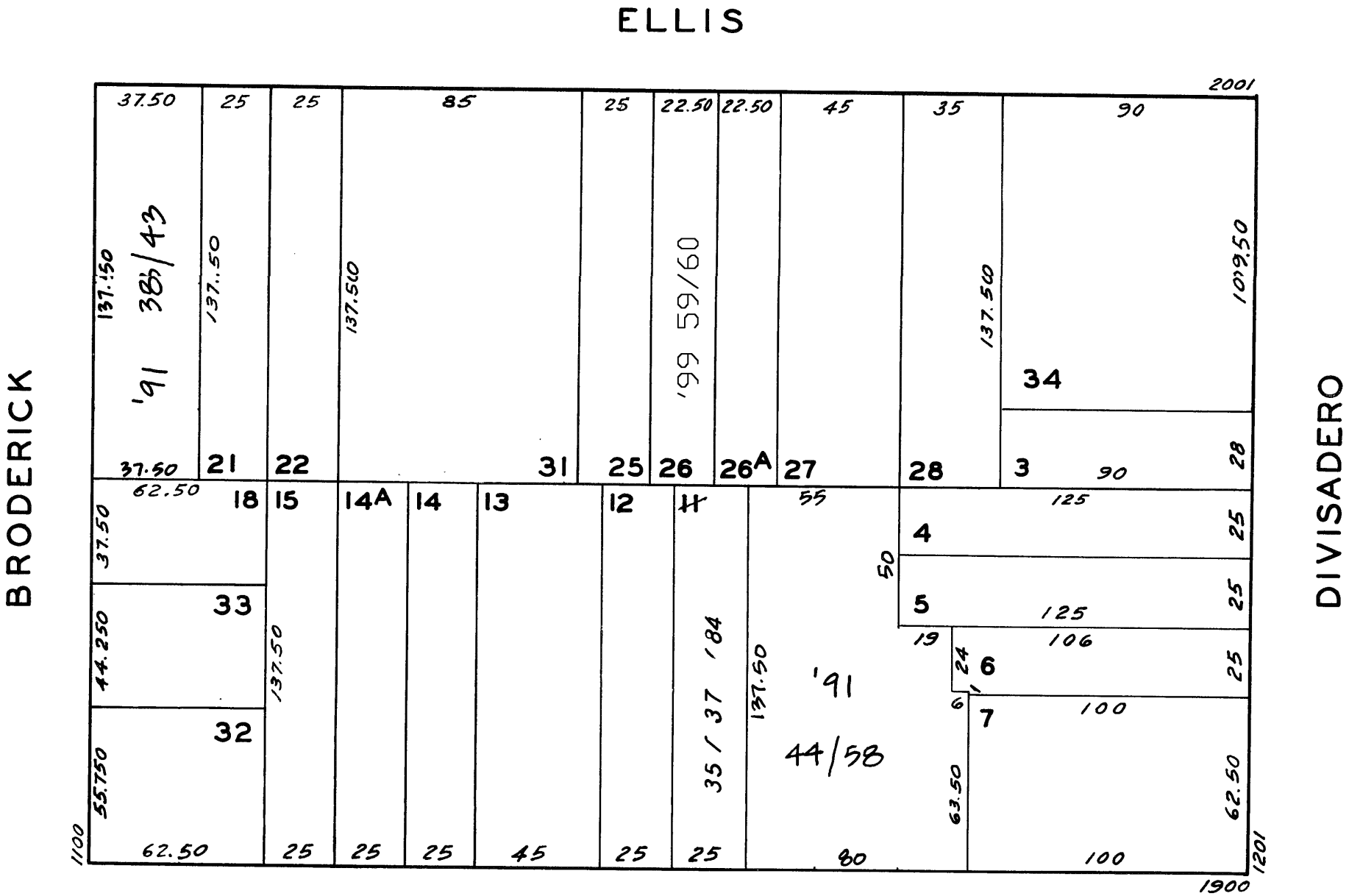
REVISED '60

" '66
" '75
" '78
" '84
" 88
" '89
" '91

lot 26 into lots 59/60 for 1999 roll



Revised '99



EDDY

ELIZABETH TERRACE

1930 EDDY ST.

A CONDOMINIUM

LOT	UNIT	% COMM. AREA
44	101	6.0
45	102	6.5
46	103	6.0
47	104	5.6
48	105	8.4
49	201	7.2
50	202	6.5
51	203	6.0
52	204	5.6
53	205	8.4
54	301	7.2
55	302	6.5
56	303	6.0
57	304	5.6
58	305	8.5

1942-44-46 EDDY ST.

A CONDOMINIUM

LOT	UNIT	% COMM AREA
35	1942	30.71
36	1944	33.34
37	1946	35.95

1180 BRODERICK ST.

A CONDOMINIUM

LOT	UNIT	% COMM. AREA
38	101	18.34
39	201	18.33
40	202	15.00
41	301	18.33
42	302	15.00
43	401	15.00

2049-2051 ELLIS STREET

A CONDOMINIUM

LOT	UNIT	% COMM. AREA
59	2049	59.4
60	2051	40.6