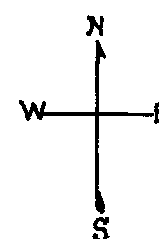


**© COPYRIGHT SAN FRANCISCO  
CITY & COUNTY ASSESSOR 1995**

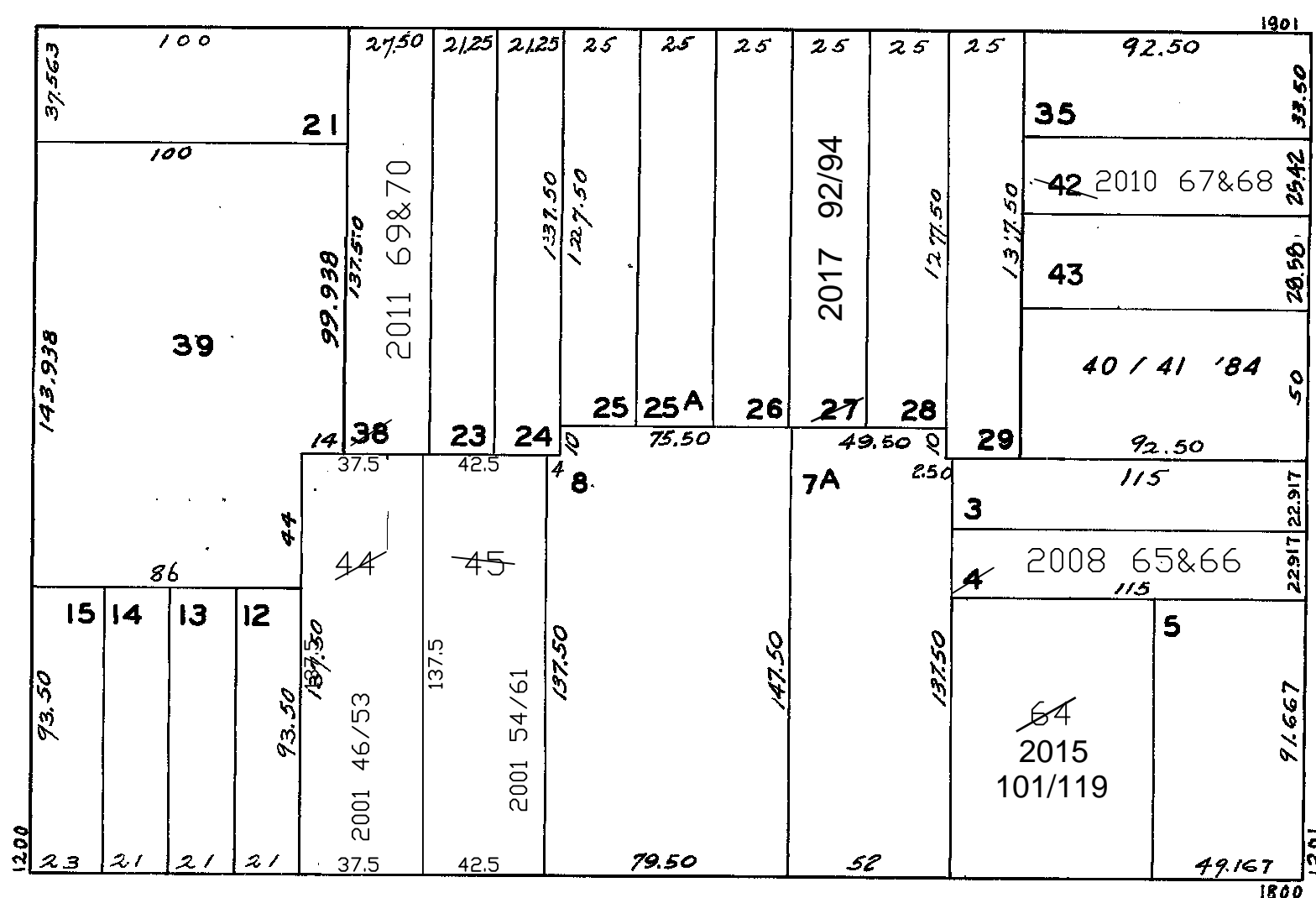
" '70  
" '75  
" '76  
" '80  
" '84  
" '88  
" '93

REVISÉ 2015  
REVISÉ 2017

lots 11 & 31 into lots 44/45 for 1999 roll  
lot44 into lots46/53 for 2001 roll  
lot45 into lots54/61 for 2001 roll  
lot4 into lots65&66 for 2008 roll  
lots6&7 into lot64 for 2008 roll  
lot42 into lots67&68 for 2010 roll  
lot38 into lots69&70 for 2011 roll  
  
Lot 64 into lots 101 to 119 for 2015 roll  
Lot 27 into lots 92 to 94 for 2017 roll



## DIVISADERO



SCOTT

EDDY

<u>1826 EDDY ST.</u>			<u>1828 EDDY ST.</u>			<u>1213-1215 SCOTT ST.</u>		
<u>A CONDOMINIUM</u>			<u>A CONDOMINIUM</u>			<u>A CONDOMINIUM</u>		
<u>LOT</u>	<u>UNIT</u>	<u>% COMM. AREA</u>	<u>LOT</u>	<u>UNIT</u>	<u>% COMM. AREA</u>	<u>LOT</u>	<u>UNIT</u>	<u>% COMM AREA</u>
			46	1	11.67	40	1213	50
54	1	13.41	47	2	12.90	41	1215	50
55	2	12.14	48	3	14.42			
56	3	14.40	49	4	14.06			
57	4	13.00	50	5	10.20			
58	5	12.10	51	6	11.52			
59	6	10.17	52	7	13.15			
60	7	13.37	53	8	12.08			
61	8	11.41						

This map was created for tax purposes only. The assessor makes no guarantee as to its accuracy nor assumes any liability for other uses. Not to be reproduced. All rights reserved.