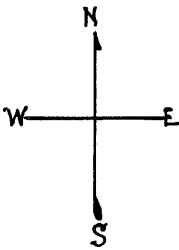


Lot 24 merged into lot 23- 44

© COPYRIGHT SAN FRANCISCO
CITY & COUNTY ASSESSOR 1995

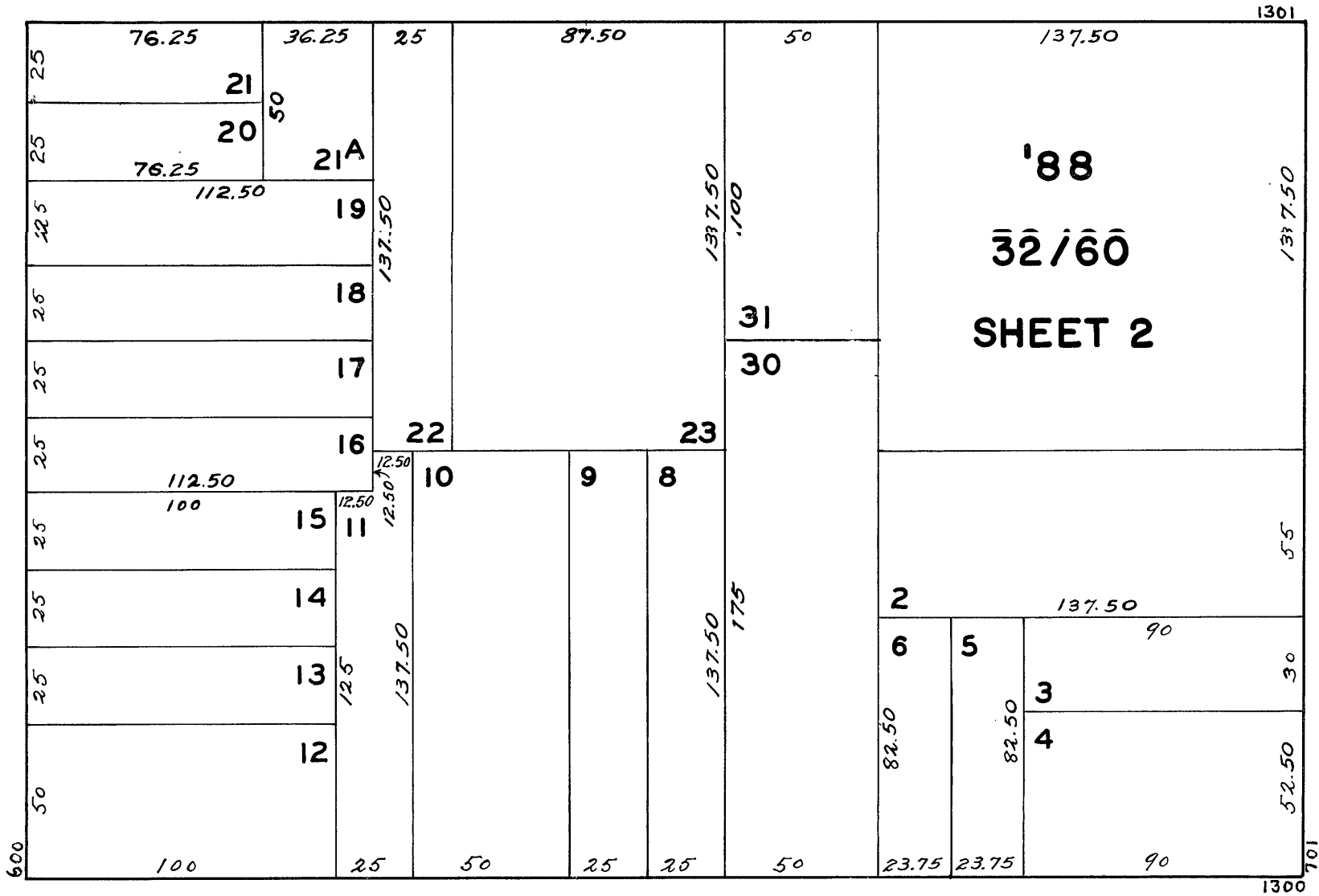
W A BLK. 513

REVISED 1972
" 1977
" 78
" '88



FULTON

BRODERICK



GROVE

DIVISADERO

PARK FULTON

1301 FULTON STREET

A CONDOMINIUM

LOT	UNIT	% COMM. AREA
32	1	5.48
33	2	3.23
34	3	2.78
35	4	1.95
36	5	1.95
37	6	2.75
38	7	6.24
39	8	2.43
40	9	3.11
41	201	3.63
42	202	3.63
43	203	2.69
44	204	4.51
45	205	2.30
46	206	2.30
47	207	3.49
48	208	3.49
49	209	4.50
50	210	4.50
51	301	3.63
52	302	3.63
53	303	2.69
54	304	4.51
55	305	2.30
56	306	2.30
57	307	3.49
58	308	3.49
59	309	4.50
60	310	4.50

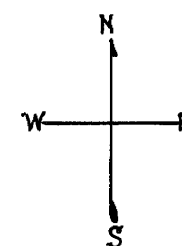
lot17 into lots64&65 for 1997 roll
lot11 into lots66&67 for 1997 roll
lot13 into lots68to70 for 2002 roll
lot31 into lots73to79 for 2008 roll
lot21A into lots71&72 for 2008 roll

lot12 into lots82&83 for 2010 roll
lot9 into lots80&81 for 2010 roll
lot82 into lots84/86 for 2014 roll

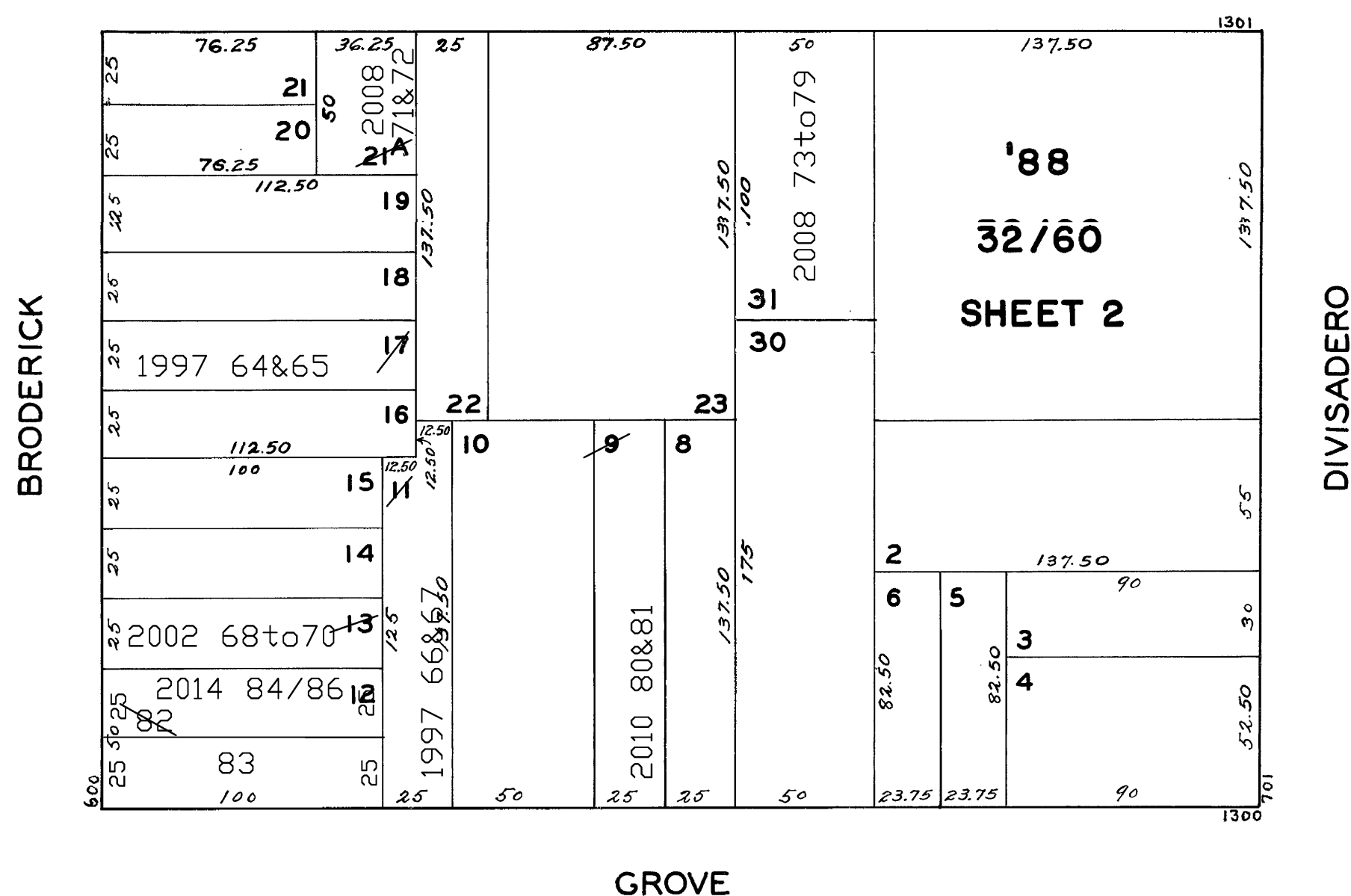
W A BLK. 513

© COPYRIGHT SAN FRANCISCO
CITY & COUNTY ASSESSOR 1995

REVISED 1972
 " 1977
 " 78
 " '88
 Revised 1997
 Revised 2002
 Revised 2008
 Revised 2010
 Revised 2014



FULTON



<u>612-616 BRODERICK ST.</u>		
<u>A CONDOMINIUM</u>		
<u>LOT</u>	<u>UNIT</u>	<u>% COMM. AREA</u>
68	612	29.62
69	614	33.42
70	616	36.96