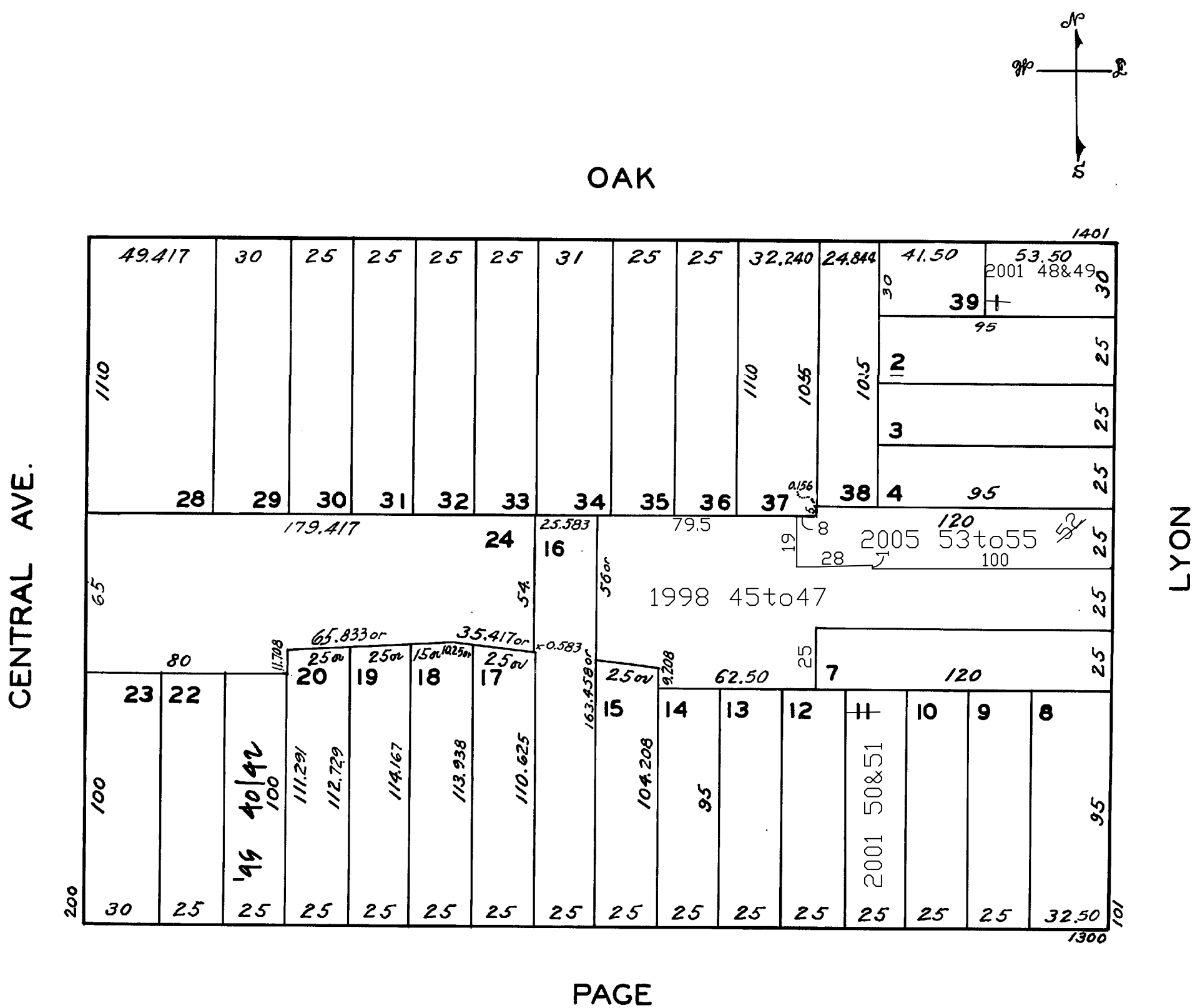


LOTS MERGED
LOTS INTO LOT lot5&6 into lots43&44 for 1997 roll
lot44 into lots45to47 for 1998 roll
lot1 into lots48&49 for 2001 roll
lot11 into lots50&51 for 2001 roll
lot43 into lot52 for 2005 roll (vacation comm.area lots45to47)
lot52 into lots 53to55 for 2005 roll

Revised 1995
Revised 1997
Revised 1998
Revised 2001
Revised 2005



1407 OAK ST. & 163 LYON ST.

A CONDOMINIUM
LOT UNIT % COMM. AREA

48	163	40.90
49	1407	59.10

1310-1310 1/2 PAGE ST.

A CONDOMINIUM
LOT UNIT % COMM. AREA

50	1310	51.90
51	1310 1/2	48.10

119 LYON ST.
A CONDOMINIUM
LOT UNIT % COMM. AREA

53	A	29.75
54	B	34.34
55	C	35.91

113-115-117 LYON ST.
A CONDOMINIUM
LOT UNIT % COMM. AREA

45	113	24.29
46	115	26.32
47	117	49.39

1382 PAGE ST.

A CONDOMINIUM

LOT	UNIT	% COMM. AREA
40	1	39.379
41	2	39.410
42	3	29.219