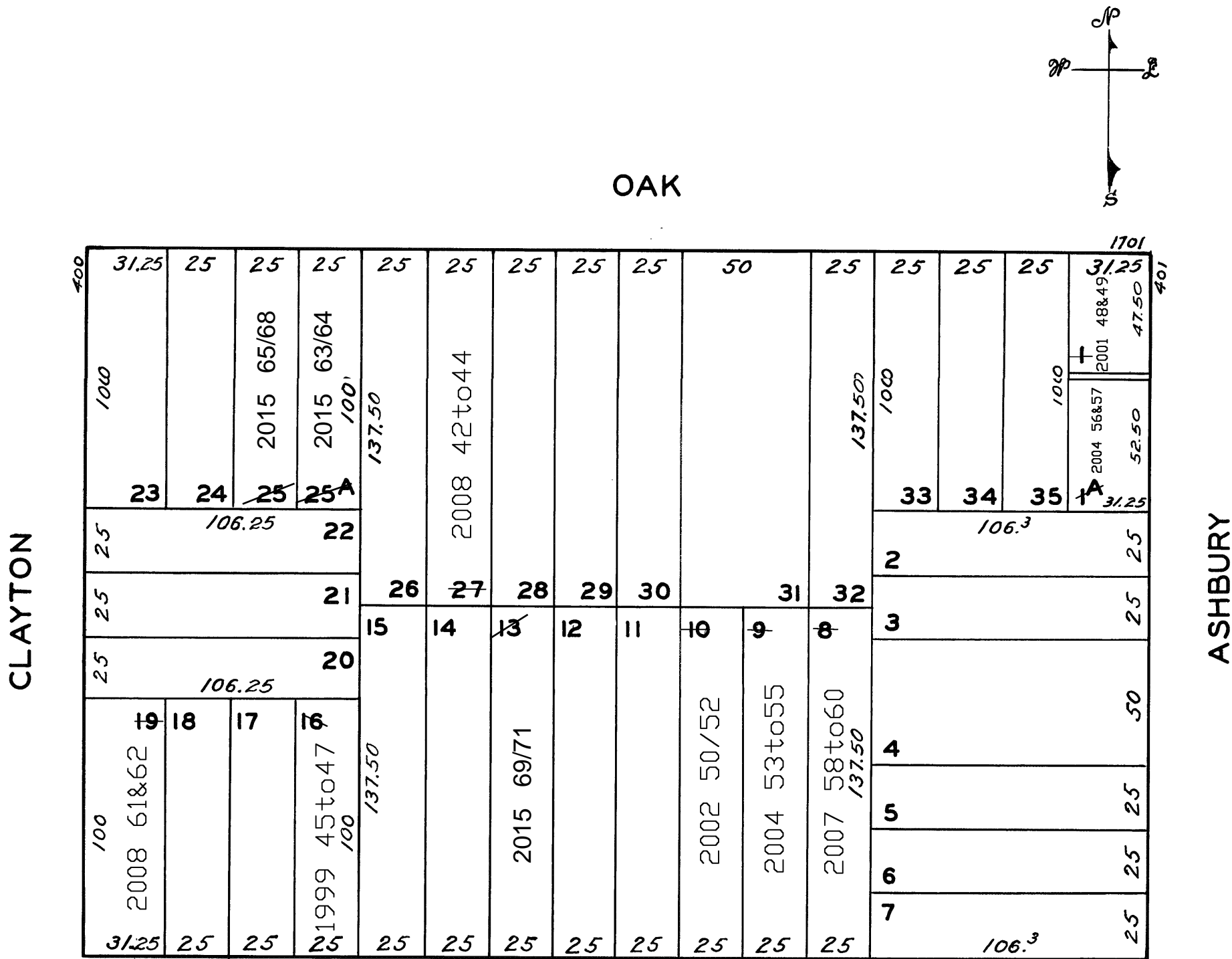


lot16 into lots45to47 for 1999 roll
lot1 into lots48&49 into 2001 roll
lot10 into lots50/52 into 2002 roll
lot9 into lots53/55 for 2004 roll
lot1A into lots56&57 for 2004 roll
lot8 into lots58to60 for 2007 roll
lot19 into lots61&62 for 2008 roll
lot27 into lots42to44 for 2008roll
Lot 25 into lots 65 to 68 for 2015 roll
Lot 13 into lots 69 to 71 for 2015 roll
Lot 25A into lots 63 & 64 for 2015 roll

Revised 1999
Revised 2001
Revised 2002
Revised 2004
Revised 2007
Revised 2008
REVISED 2015



PAGE

1674-1678 PAGE STREET			
A CONDOMINIUM			
LOT	UNIT	% COMM.	AREA
45	1674	29.50	
46	1676	32.00	
47	1678	38.50	

401-403 ASHBURY ST.			
A CONDOMINIUM			
LOT	UNIT	% COMM.	AREA
48	401	47.40	
49	403	52.60	

1640-1644 PAGE ST.			
A CONDOMINIUM			
LOT	UNIT	% COMM.	AREA
50	1640	32	
51	1642	32	
52	1644	36	

1634-1638 PAGE ST.			
A CONDOMINIUM			
LOT	UNIT	% COMM.	AREA
53	1634	10	
54	1636	80	
55	1638	10	

1628-1632 PAGE ST.			
A CONDOMINIUM			
LOT	UNIT	% COMM.	AREA
58	1628	33.33	
59	1630	33.33	
60	1632	33.34	

415-417 ASHBURY ST.			
A CONDOMINIUM			
LOT	UNIT	% COMM.	AREA
56	415	46.77	
57	417	53.23	