

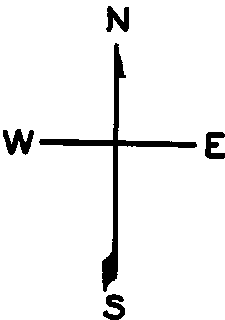
LOTS MERGED

LOTS INTO LOT
11 10 '1944'
lot36 into lots53&54 for 2004 roll
lot40 into lots55&56 for 2010 roll

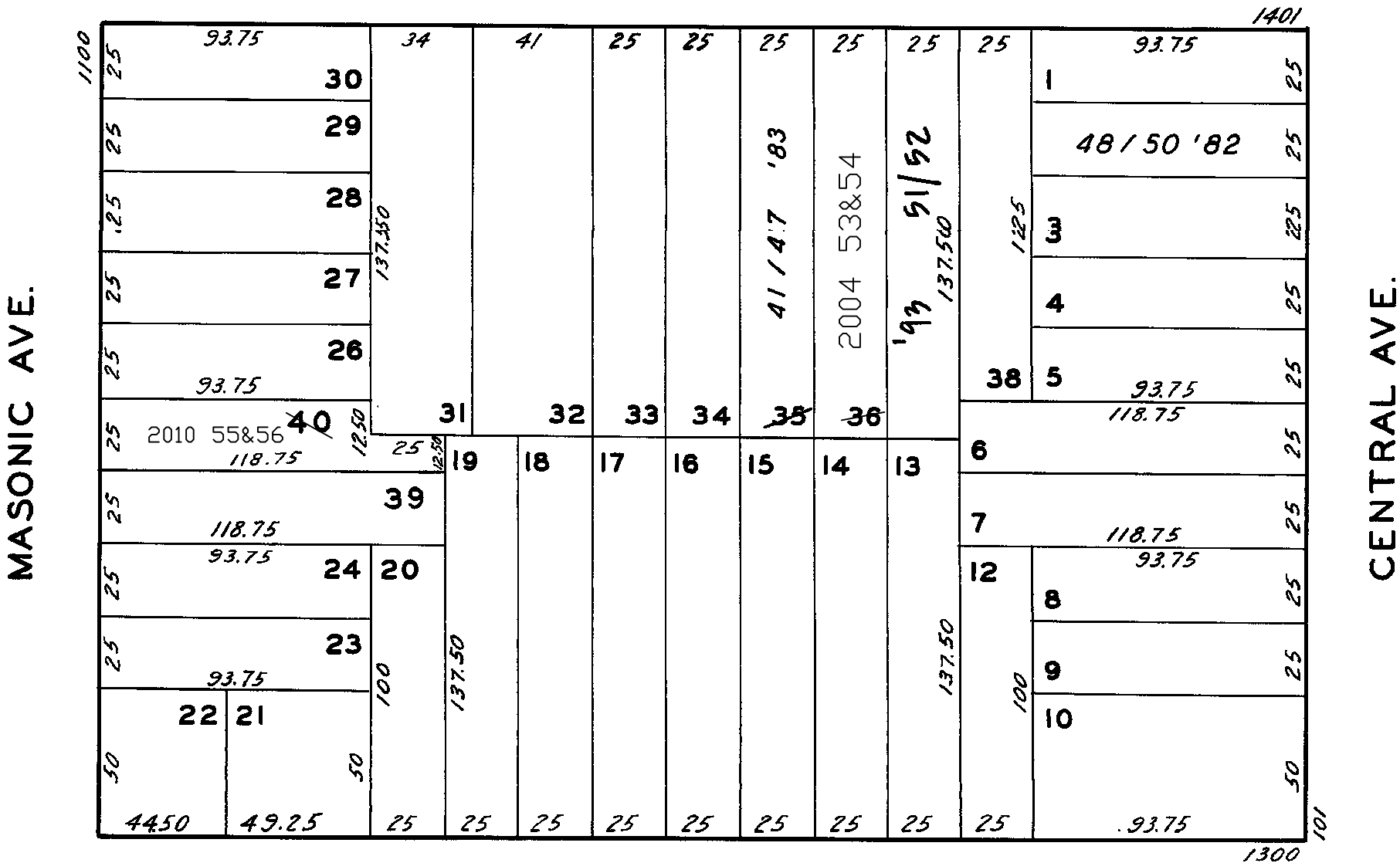
1233

W A BLK. 656

REVISED '73
" '82
" '83
" '93
Revised 2004
Revised 2010



PAGE



HAIGHT

1437-1439 PAGE ST.			
A CONDOMINIUM			
LOT	UNIT	% COMM.	AREA
53	1437	50	
54	1439	50	

1441-47 PAGE ST.			
A CONDOMINIUM			
LOT	UNIT	% COMM	AREA
41	1441	16.884	
42	1443A	12.786	
43	1443B	15.013	
44	1445A	12.520	
45	1445B	14.667	
46	1447A	13.249	
47	1447B	14.881	

155-59 CENTRAL AVE.			
A CONDOMINIUM			
LOT NO	UNIT NO	% COMMON	AREA
48	155	30.318	
49	157	33.549	
50	159	36.133	

1433-1435 PAGE ST.			
A CONDOMINIUM			
LOT	UNIT	% COMM.	AREA
51			
52			