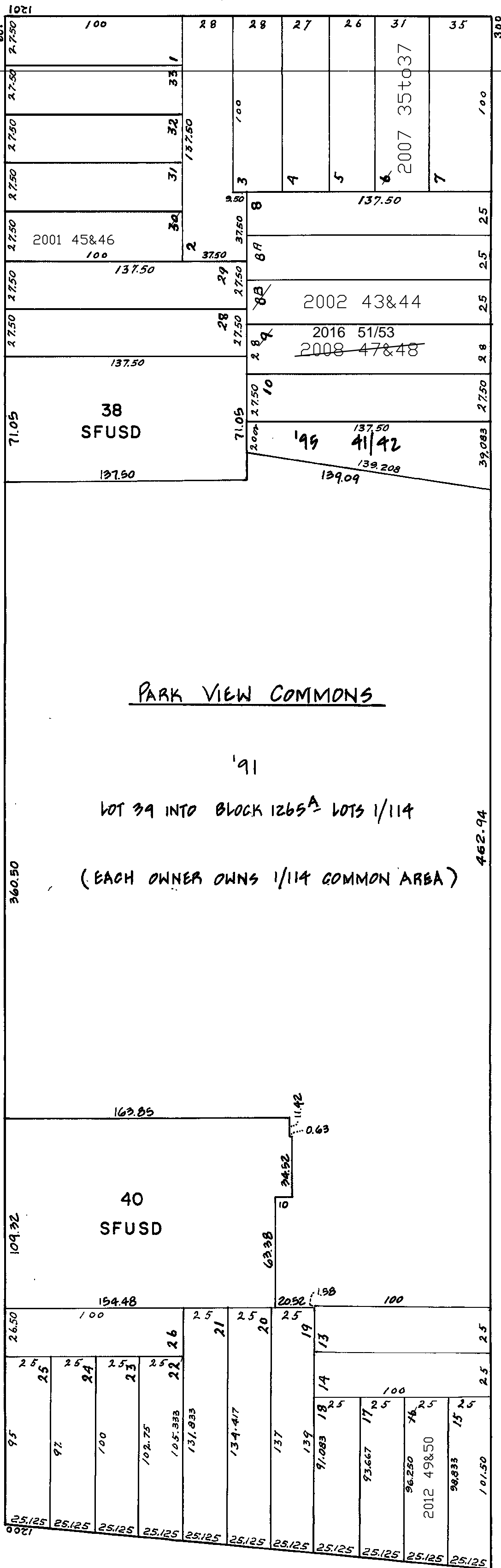


lot30 into lots45&46 for 2001 roll
lot8B into lots43&44 for 2002 roll
lot6 into lot35to37 for 2007 roll
lot9 into lots47&48 for 2008 roll
lot16 into lots49&50 for 2012 roll
Lots 47 & 48 into lots 51 to 53 for 2016 roll

W. A. BLK. 740

REVISED '58
" '89
" '91
" '95
Revised 2001
Revised 2002
Revised 2007
Revised 2008
Revised 2012
REVISED 2016



CARL

348-350 CARL ST.
A CONDOMINIUM

LOT	UNIT	% COMM. AREA
41	348	52.79
42	350	47.21

625-627 FREDERICK ST.
A CONDOMINIUM

LOT	UNIT	% COMM. AREA
45	625	44.02
46	627	55.98

330-332 CARL ST.
A CONDOMINIUM

LOT	UNIT	% COMM. AREA
43	330	46.1
44	332	53.9

1249-1253 WILLARD ST.
A CONDOMINIUM

LOT	UNIT	% COMM. AREA
35	1249	29.62
36	1251	34.04
37	1253	36.34