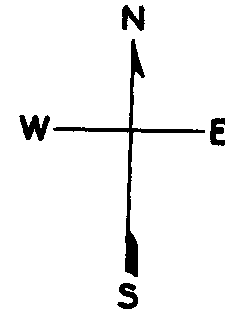


lot 124 into lots 199/200 for 1999 roll
lot129 into lots208&209 for 2003 roll
lot36 into lots212to215 for 2007 roll
lot42 into lots231/234 for 2013 roll

REVISED	'64
"	'72
"	'78
"	'85

Revised '99
Revised 2003
Revised 2007
Revised 2013

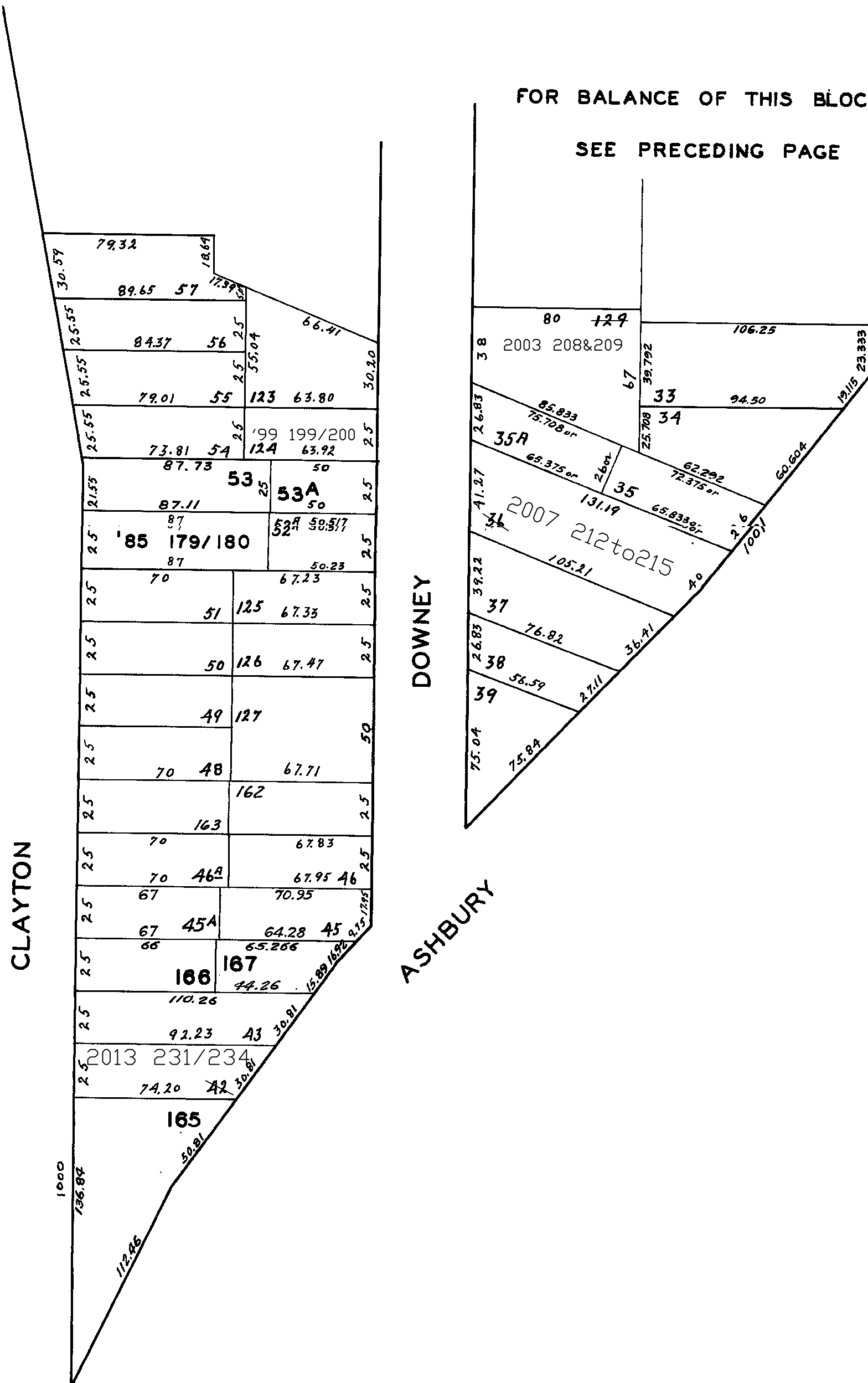


<u>LOT NO.</u>	<u>UNIT NO.</u>	<u>% COMMON AREA</u>
179	976	46.276
180	978	53.724

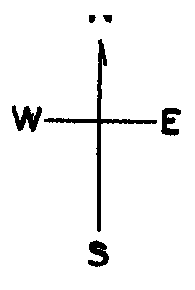
199	255	50.0
200	257	50.0

208	252	25
209	254	75

212	1	39
213	2	24
214	3	17
215	4	20



s206&207 for 2003 roll
s210&211 for 2004 roll
s216&217 for 2005 roll
s220&221 for 2006 roll
s218&219 for 2007 roll



W.A. BLK. 677

REVISED '70
" '89
" '92
" '94
" '95
" '96

Revised 1997
Revised 1999
Revised 2003
Revised 2004
Revised 2005
Revised 2006
Revised 2007
REVISED 2015

815-819 ASHBURY ST.

A CONDOMINIUM

LOT	UNIT	% COMM. AREA
170	815	37.993
171	817	29.772
172	819	32.235

163-165 DOWNEY STREET

A CONDOMINIUM

LOT	UNIT	% COMM. AREA
201	163	46.29
202	165	53.71

251-253-255 FREDERICK ST.

A CONDOMINIUM

LOT	UNIT	% COMM. AREA
183	251	25.539
184	253	36.878
185	255	37.583

244 DOWNEY ST.

A CONDOMINIUM

LOT	UNIT	% COMM. AREA
188	3	24.72
189	4	27.36
193	1	20.56
194	2	27.36

* LOT NUMBERS SKIPPED

116 DOWNEY ST.

A CONDOMINIUM

LOT	UNIT	% COMM. AREA
190	1	32.75
191	2	33.67
192	3	33.58

269-273 FREDERICK STREET

A CONDOMINIUM

LOT	UNIT	% COMM. AREA
203	269	39.40
204	271	30.30
205	273	30.30

THIS BLOCK

CONTINUED ON NEXT PAGE

DOWNEY ST.
CONDOMINIUM
% COMM. AREA

65
35

-148 DOWNEY ST.
CONDOMINIUM
% COMM. AREA

25.00
25.00
25.00
25.00

DOWNEY ST.
CONDOMINIUM
% COMM. AREA

37.26
62.74

ASHBURY ST.
CONDOMINIUM
% COMM. AREA

40
60

DOWNEY ST.
CONDOMINIUM
% COMM. AREA

25
75

FREDERICK ST.
CONDOMINIUM
% COMM. AREA

25
75

CLAYTON

DOWNEY

ASHBURY

