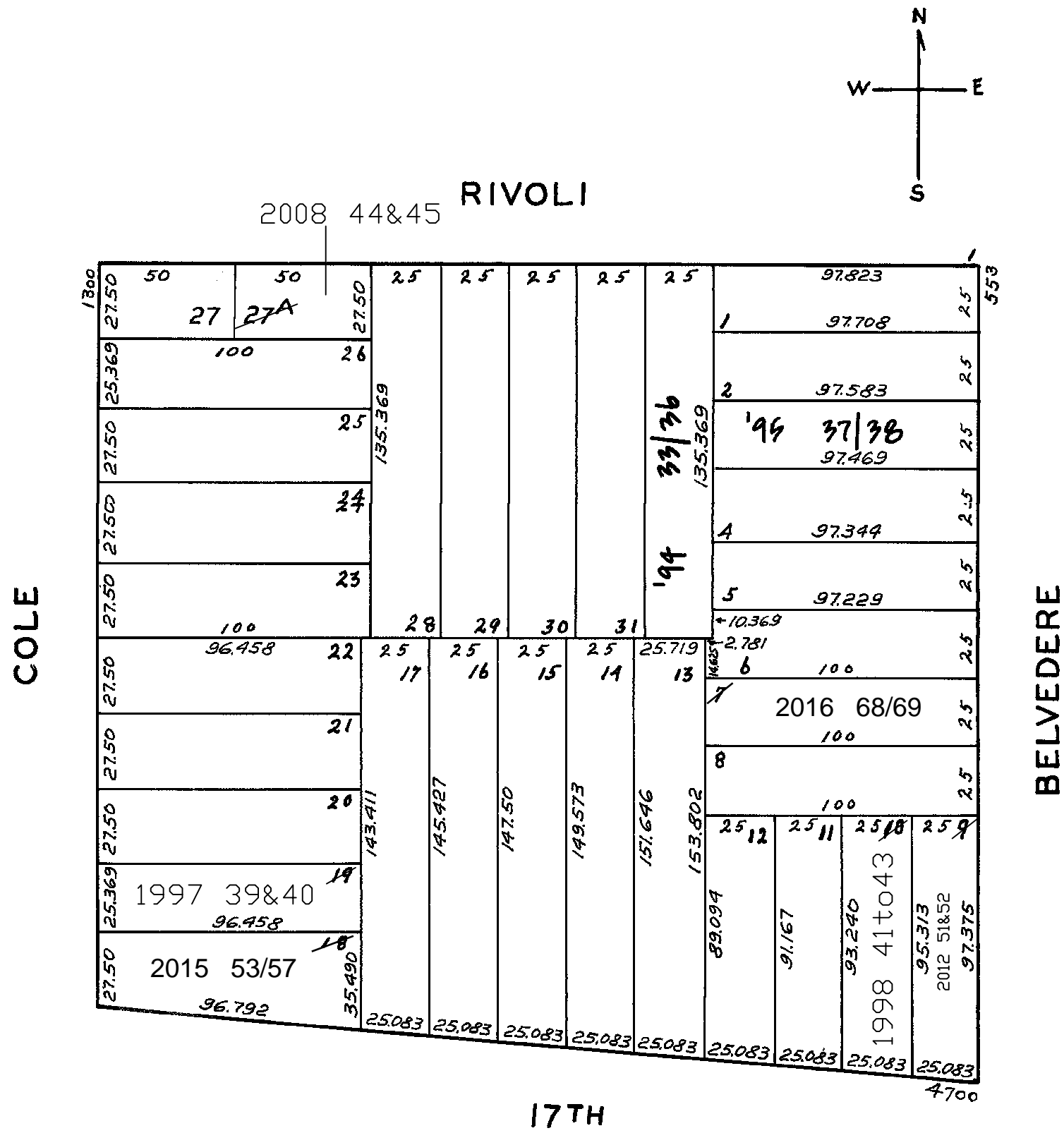


lot19 into lots39&40 for 1997 roll  
lot10 into lots41to43 for 1998 roll  
lot27A into lots44&45 for 2008 roll  
lot9 into lots51&52 for 2012 roll  
Lot 18 into lots 53 to 57 for 2015 roll  
Lot 7 into lots 68 & 69 for 2016 roll

1286  
W. A. BLK. 881

REVISED 1999  
" '95  
Revised 1998  
Revised 1997  
Revised 2008  
Revised 2012  
REVISED 2015  
REVISED 2016



1356-1358 COLE ST.			
A CONDOMINIUM			
LOT	UNIT	% COMM.	AREA
39	1	50	
40	2	50	

4708-4710-4710A 17TH ST.			
A CONDOMINIUM			
LOT	UNIT	% COMM.	AREA
41	3708	41	
42	3710	38	
43	3710A	21	

25-27-29-29A RIVOLI ST.			
A CONDOMINIUM			
LOT	UNIT	% COMM.	AREA
33	25	27.59	
34	29A	7.22	
35	27	31.46	
36	29	33.73	

561-563 BELVEDERE ST.			
A CONDOMINIUM			
LOT	UNIT	% COMM.	AREA
37	561	47	
38	563	53	