

LOTS MERGED

| | | |
|------|------|--------|
| LOTS | INTO | LOT |
| 11A | 12 | '1950' |
| 17 | 16 | '1922' |
| 28A | 27 | '1954' |

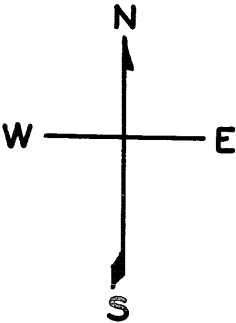
lot27 into lots41&42 for 2001 roll
lot2 into lots43&44 for 2002 roll
lot9 into lots45&46 for 2005 roll
lot3 into lots47&48 for 2008 roll

1287

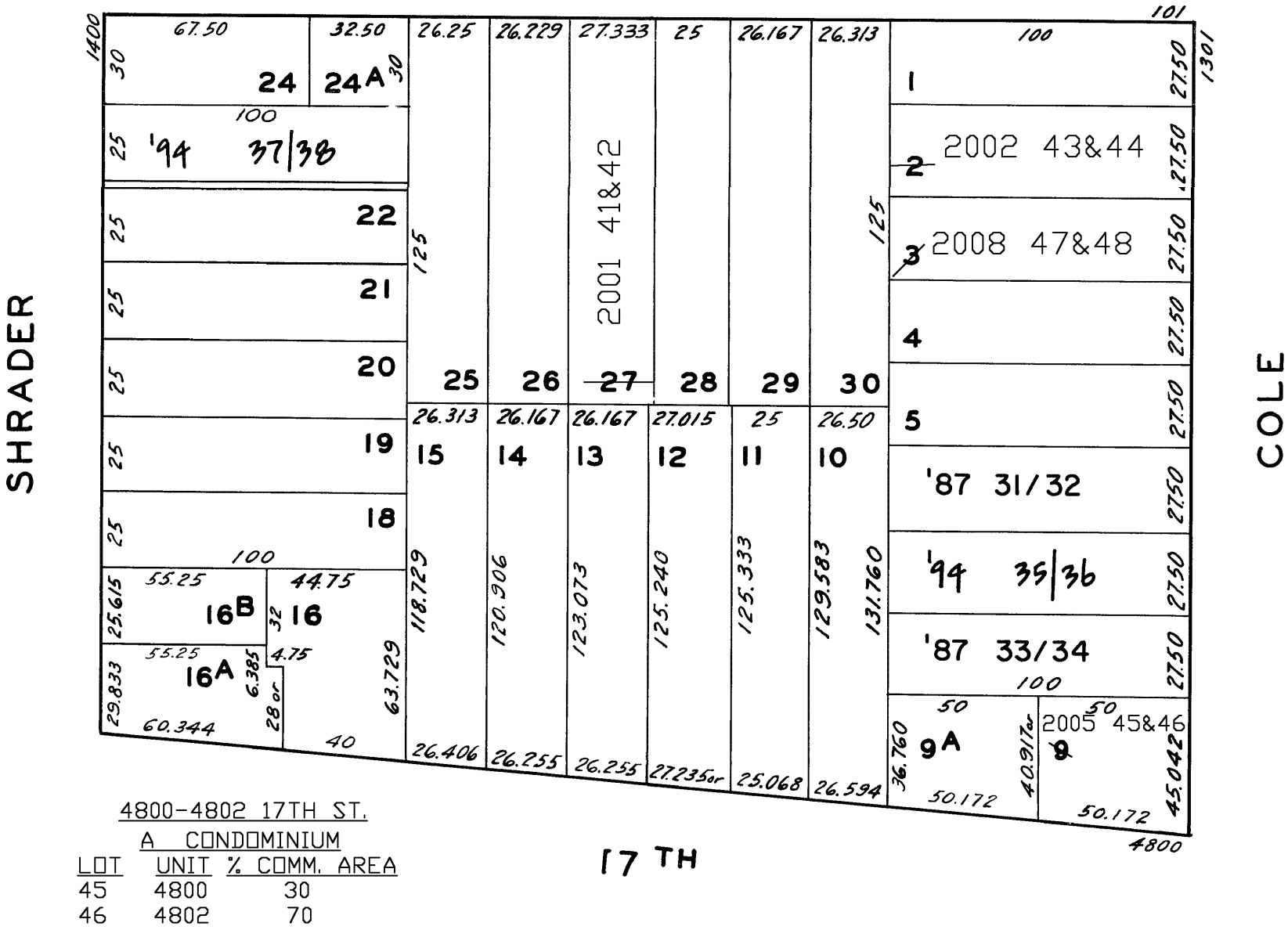
W A BLK. 880

REVISED '87
" '94

Revised 2001
Revised 2002
Revised 2005
Revised 2008



RIVOLI



141-143 RIVOLI ST.
A CONDOMINIUM

| LOT | UNIT | % COMM. AREA |
|-----|------|--------------|
| 41 | 141 | 42.07 |
| 42 | 143 | 57.93 |

1327-1329 COLE ST.
A CONDOMINIUM

| LOT | UNIT | % COMM. AREA |
|-----|------|--------------|
| 31 | 1327 | 48.17 |
| 32 | 1329 | 51.83 |

1343-1345 COLE ST.
A CONDOMINIUM

| LOT | UNIT | % COMM. AREA |
|-----|------|--------------|
| 33 | 1343 | 46 |
| 34 | 1345 | 54 |

1307-1309 COLE ST.
A CONDOMINIUM

| LOT | UNIT | % COMM. AREA |
|-----|------|--------------|
| 43 | 1307 | 53.00 |
| 44 | 1309 | 47.00 |

1408-1410 SHRAMER ST.
A CONDOMINIUM

| LOT | UNIT | % COMM. AREA |
|-----|------|--------------|
| 37 | 1408 | 48.17 |
| 38 | 1410 | 51.83 |

1337-1339 COLE ST.
A CONDOMINIUM

| LOT | UNIT | % COMM. AREA |
|-----|------|--------------|
| 35 | 1337 | 53.98 |
| 36 | 1339 | 46.02 |