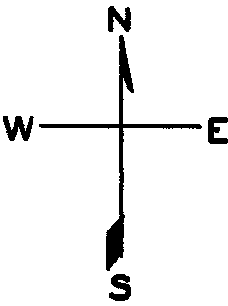


LOTS MERGED
LOT 18A INTO LOT 19-'44'
" 234 " " 17-'56'

© COPYRIGHT SAN FRANCISCO
CITY & COUNTY ASSESSOR 1995

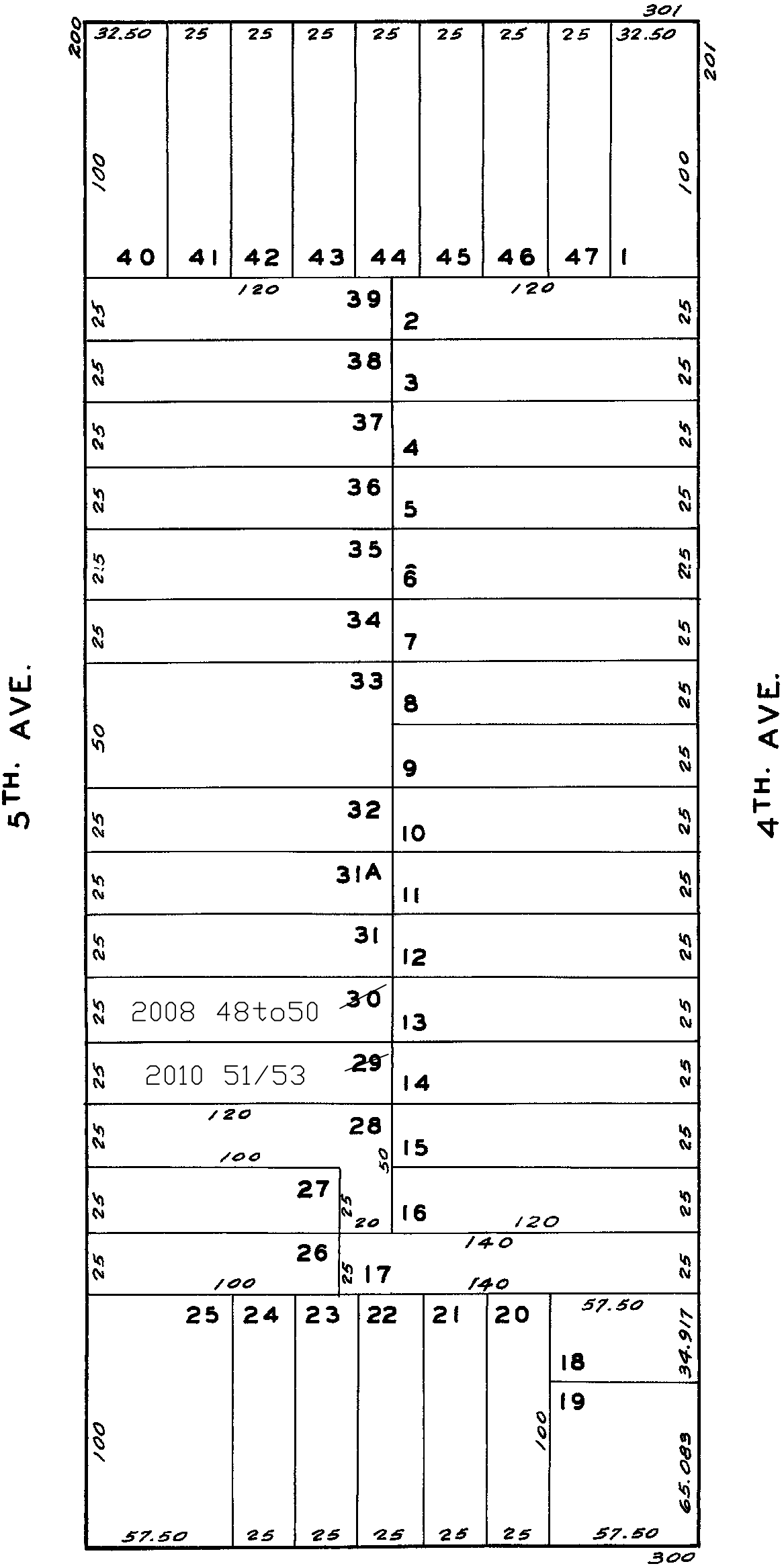
lot30 into lots48to50 for 2008 roll
lot29 into lots51/53 for 2010 roll



RICHMOND BLK. 178

Revised 2008
Revised 2010

CORNWALL



CLEMENT