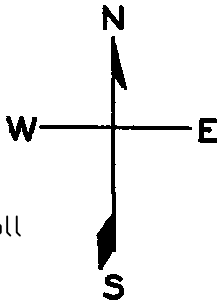


ASSESSOR-RECORDER'S OFFICE

Lot 23 merged into lot 22 - "1944"
" 37 " " 36 "
" 38 " " 36 "950"
" 26/28 " " 25 "955"

lot35 into lots46&47 for 2001 roll
lot31 into lots48&49 for 2010 roll
© COPYRIGHT SAN FRANCISCO
CITY & COUNTY ASSESSOR 1995



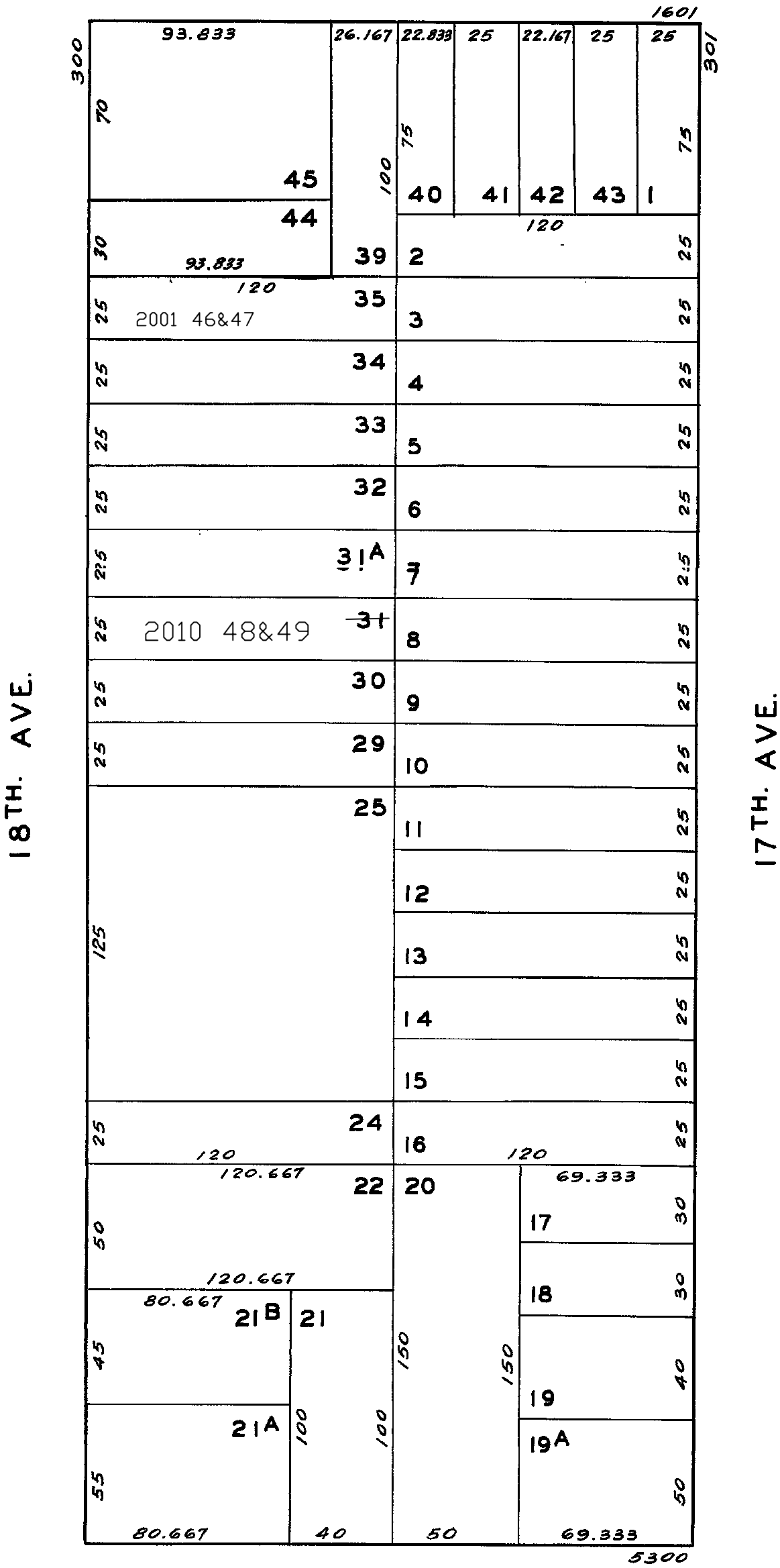
1449

RICHMOND BLK. 198

REVISED '58

Revised 2001
Revised 2010

CLEMENT



318-320 18TH AVE.
A CONDOMINIUM

LOT	UNIT	% COMM. AREA
46	318	47.6
47	320	52.4

This map was created for tax purposes only. The assessor makes no guarantee as to its accuracy nor assumes any liability for other uses. Not to be reproduced. All rights reserved.