

LOTS MERGED

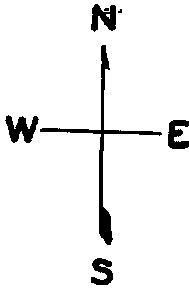
LOT 16 INTO LOT 15 - '1928'

lot3 into lots27to30 for 2007 roll  
lots14B&15 into lots40&41 for 2010 roll

RICHMOND BLK. 209

REVISED '57

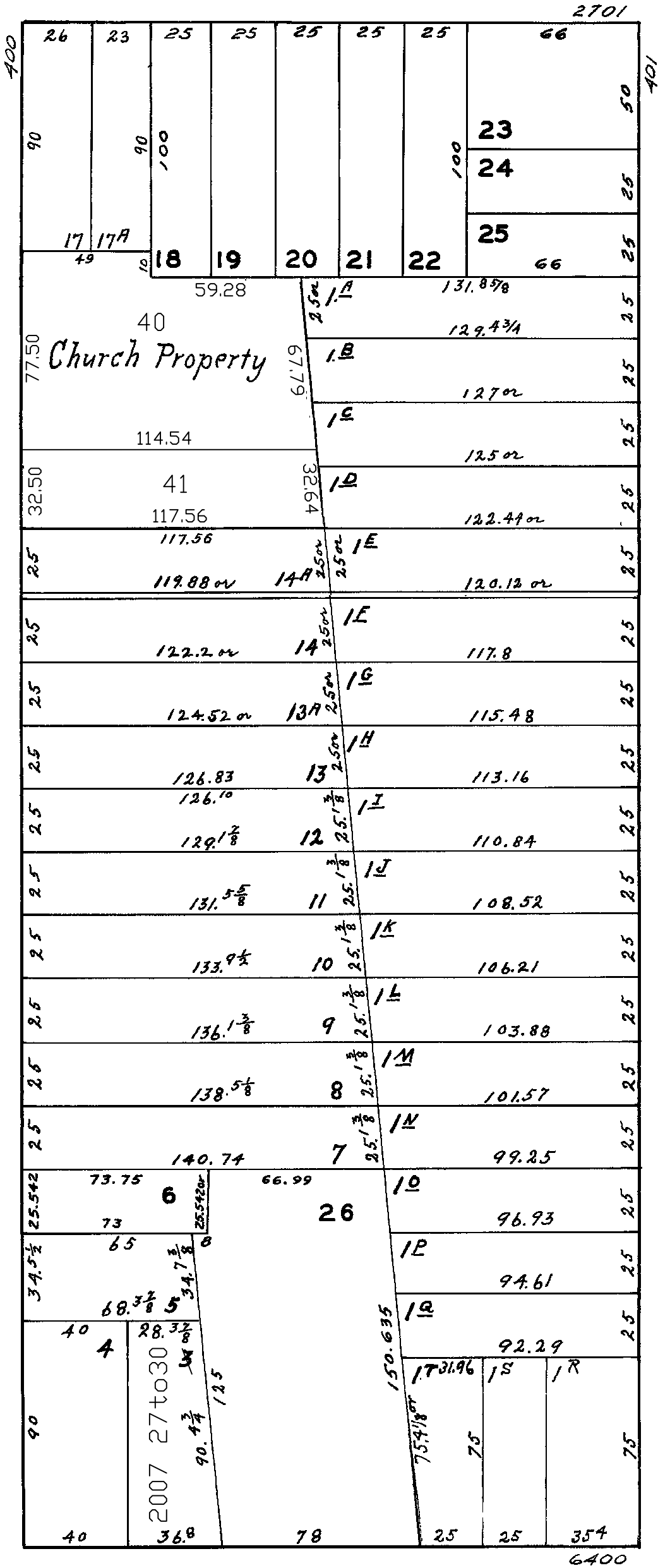
Revised 2007  
Revised 2010



CLEMENT

29TH AVE

28TH AVE



GEARY BLVD.

6442-6448 GEARY BLVD.			
A CONDOMINIUM			
LOT	UNIT	% COMM.	AREA
27	6442	30	
28	6444	30	
29	6446	20	
30	6448	20	