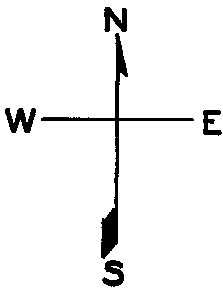


ASSESSOR-RECORDER'S OFFICE

Lot 48 omitted "1915"
Lot 34 merged into lot 33-"1944"
" 46 " " " 45- "
" 46A " " " 47- "
24.2



1467

RICHMOND BLK. 216

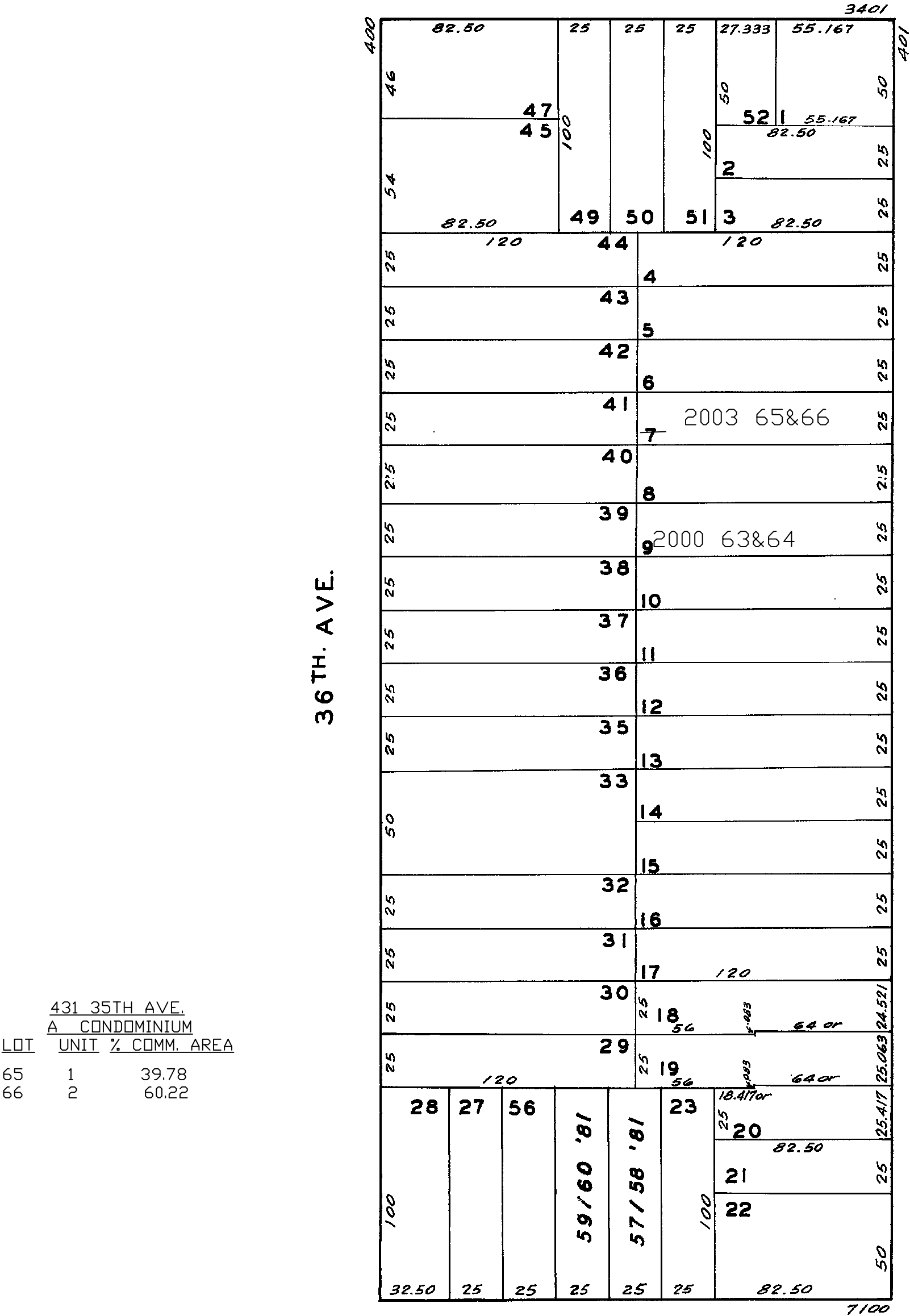
REVISED 1969
" 1979
" '81

Revised 2000
Revised 2003

© COPYRIGHT SAN FRANCISCO
CITY & COUNTY ASSESSOR 1995

lot9 into lots63&64 for 2000 roll
lot7 into lots65&66 for 2003 roll

CLEMENT



431 35TH AVE.
A CONDOMINIUM

LOT	UNIT	% COMM. AREA
65	1	39.78
66	2	60.22

439-439A 35TH AVE.
A CONDOMINIUM

LOT	UNIT	% COMM. AREA
63	439	49.64
64	439A	50.36

7126-7128 GEARY BLVD.
A CONDOMINIUM

LOT NO.	UNIT NO.	% COMMON AREA
57	1	44.37
58	2	55.63

7132-7134 GEARY BLVD.
A CONDOMINIUM

LOT NO.	UNIT NO.	% COMMON AREA
59	1	44.32
60	2	55.68

GEARY BLVD.