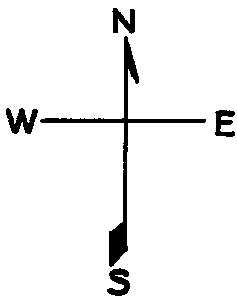


© COPYRIGHT SAN FRANCISCO
CITY & COUNTY ASSESSOR 1995

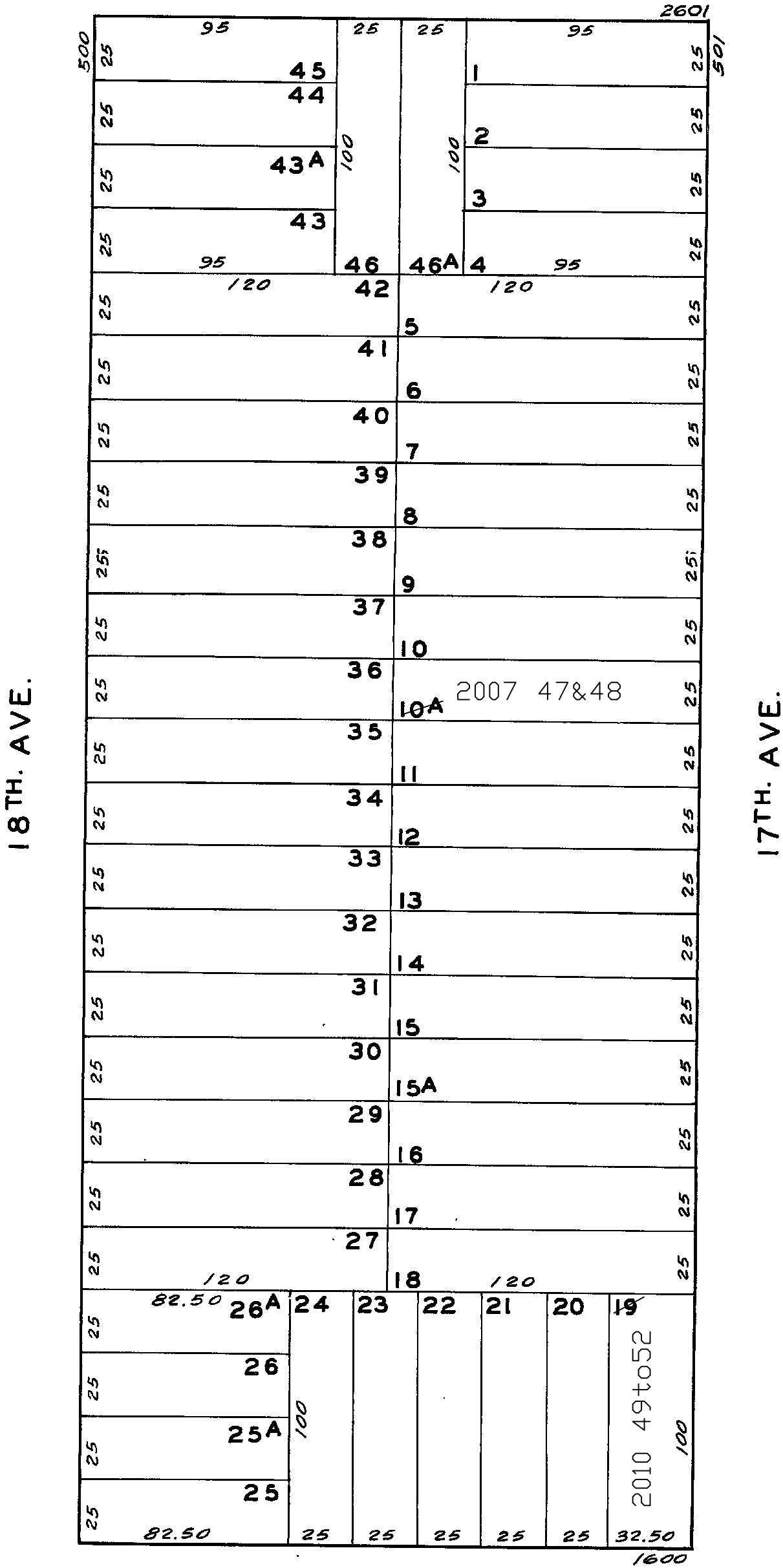
lot10A into lots47&48 for 2007 roll
lot19 into lots49to52 for 2010 roll



1560
RICHMOND BLK. 300

Revised 2007
Revised 2010

ANZA



BALBOA

543-545 17TH AVE.
A CONDOMINIUM

LOT	UNIT	% COMM. AREA
47	543	46.8
48	545	53.2