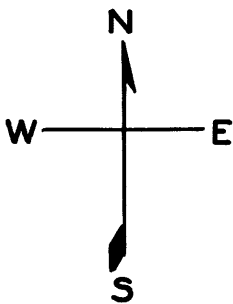


LOTS MERGED

Lots 4<sup>A</sup>, 5<sup>D</sup> & 5<sup>E</sup> merged into lot 3<sup>A</sup> - "1944"

© COPYRIGHT SAN FRANCISCO  
CITY & COUNTY ASSESSOR 1995

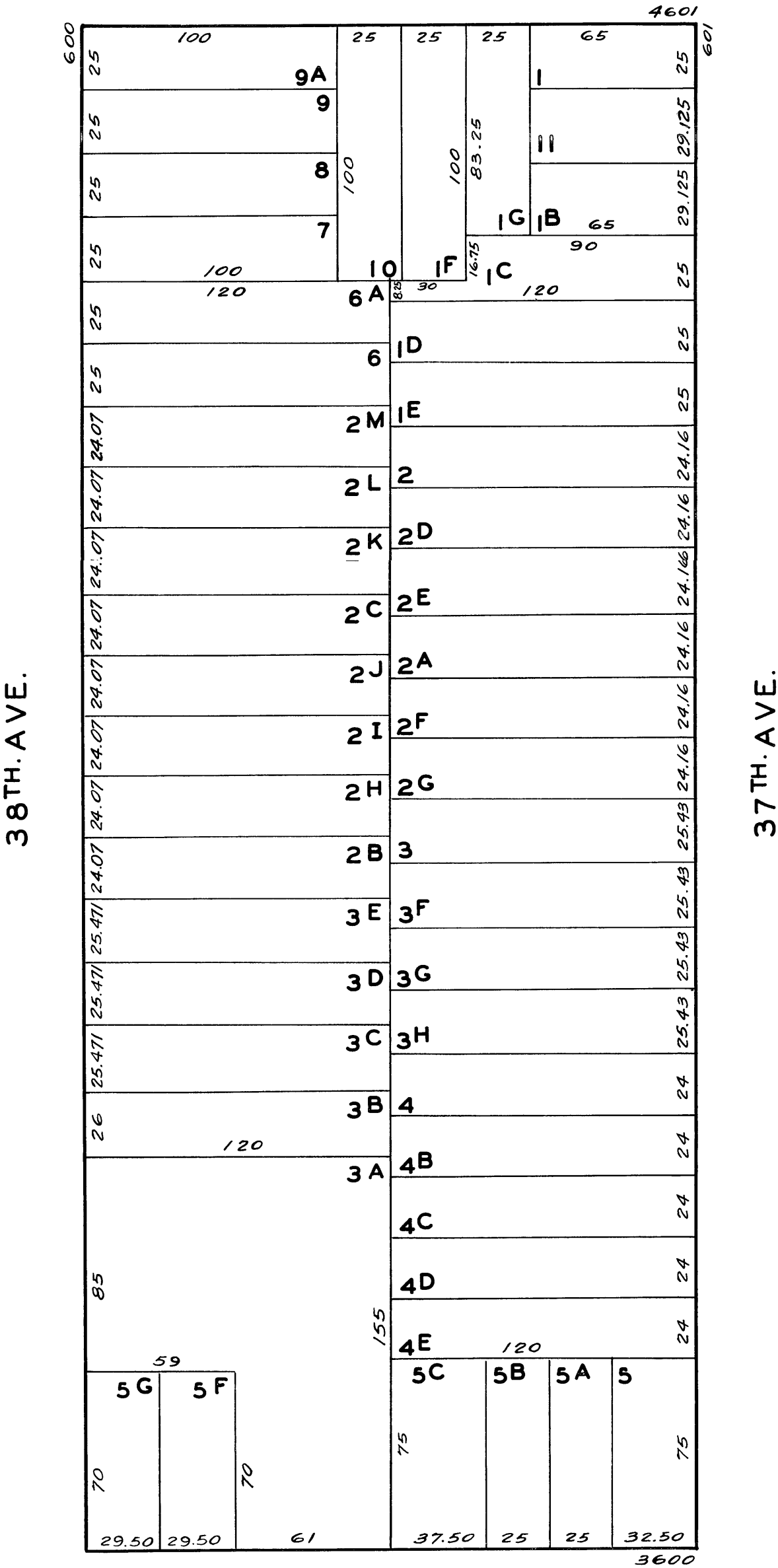


1580

RICHMOND BLK. 320

REVISED '68

ANZA



BALBOA