

ASSESSOR-RECORDER'S OFFICE

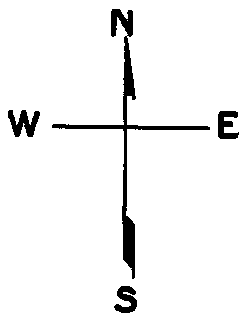
© COPYRIGHT SAN FRANCISCO
CITY & COUNTY ASSESSOR 1995

LOTS MERGED

LOT 29 INTO LOT 28 '46
" 39A " " 39 '46

lot 13 into lots 58/59 for 2000 roll
lot 7 into lots 60&61 for 2003 roll

1763
SUNSET BLK. 680

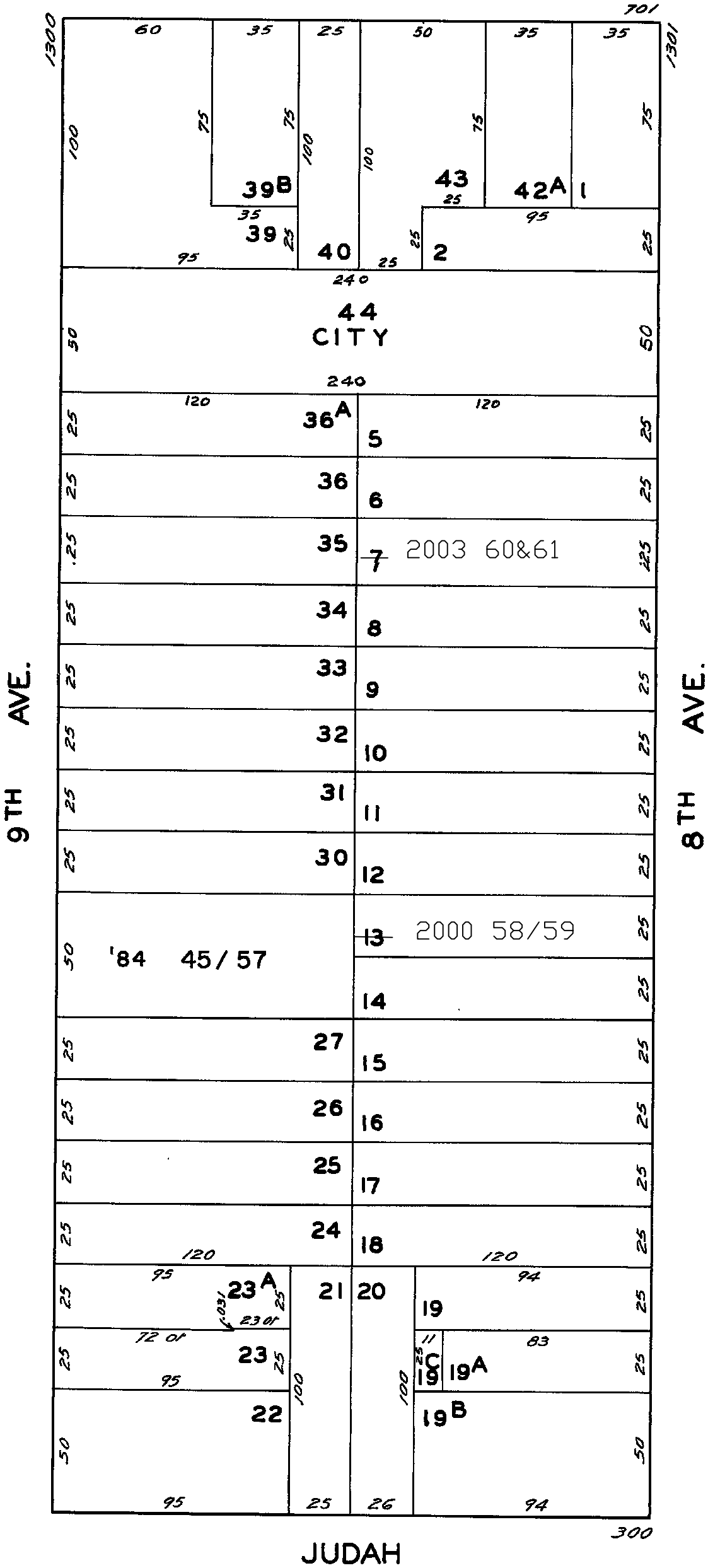


REVISED	'66
"	'69
"	'84

Revised 2000
Revised 2003

1359-1361 8TH AVE.		
A CONDOMINIUM		
LOT	UNIT	% COMM. AREA
58	1359	46.67
59	1361	53.33

1333-1335 8TH AVE.		
A CONDOMINIUM		
LOT	UNIT	% COMM. AREA
60	1333	47
61	1335	53



1360 NINTH AVE.		
A CONDOMINIUM		
LOT NO.	UNIT NO.	% COMMON AREA
45	1	11
46	2	8
47	3	7
48	4	7
49	5	7
50	6	8
51	7	8
52	8	7
53	9	7
54	10	8
55	11	8
56	12	7
57	13	7