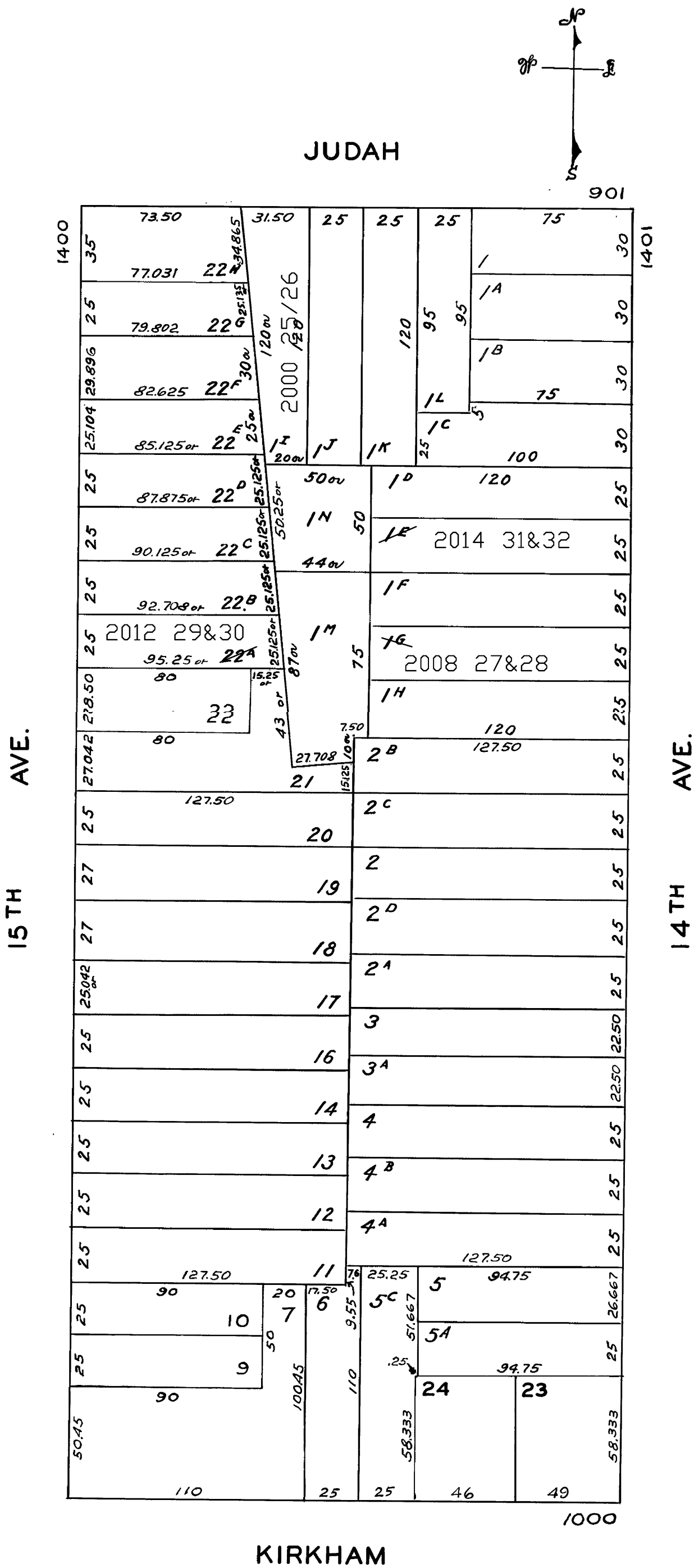


lot 1I into lots 25&26 for 2000 roll  
lot1G into lots27&28 for 2008 roll  
lot22A into lots29&30 for 2012 roll  
lot1E into lots31&32 for 2014 roll

REVISED '58  
Revised 2000  
Revised 2008  
Revised 2012  
Revised 2014



Block - Re-numbered '1915'  
Lot 15 omitted '1931'  
Lots 849 omitted '1942'

937-939 JUDAH STREET			
A CONDOMINIUM			
LOT	UNIT	% COMM.	AREA
25	937	50	
26	939	50	

1433-1435 14TH AVE.			
A CONDOMINIUM			
LOT	UNIT	% COMM.	AREA
27	1433	47.03	
28	1435	52.97	