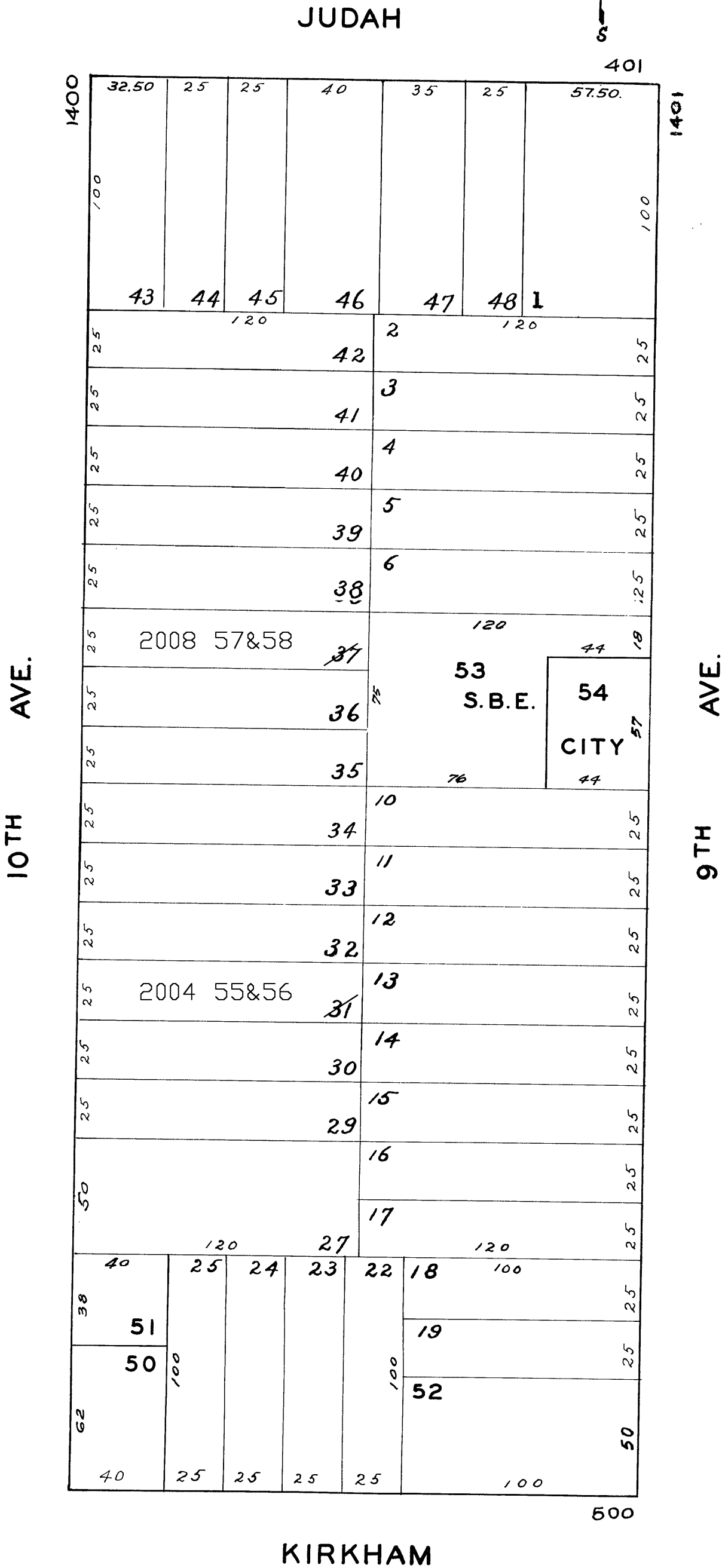
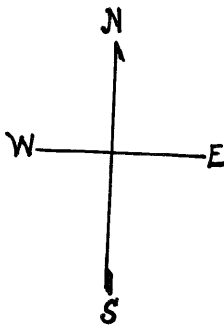


LOTS MERGED

Lot 8&9 merged into Lot 7 "1943"
" 49 " " " 1. "1943"
" 28 " " " 27 '46
lot31 into lots55&56 for 2004 roll
lot37 into lots57&58 for 2008 roll

REVISED '57
REVISED '58
" '83
Revised 2004
Revised 2008



1462-1464 10TH AVE.
A CONDOMINIUM

LOT	UNIT	% COMM.	AREA
55	1462	50	
56	1464	50	

1438-1440 10TH AVE.
A CONDOMINIUM

LOT	UNIT	% COMM.	AREA
57	1438	52	
58	1440	48	