

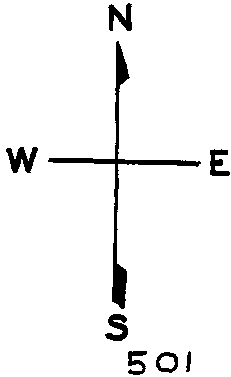
ASSESSOR-RECORDER'S OFFICE

© COPYRIGHT SAN FRANCISCO  
CITY & COUNTY ASSESSOR 1995

lot36 into lots43&44 for 2002 roll  
lot13 into lots51&52 for 2011 roll

1932 / 15  
SUNSET BLK. 854

REVISED 1982  
Revised 2002  
Revised 2011

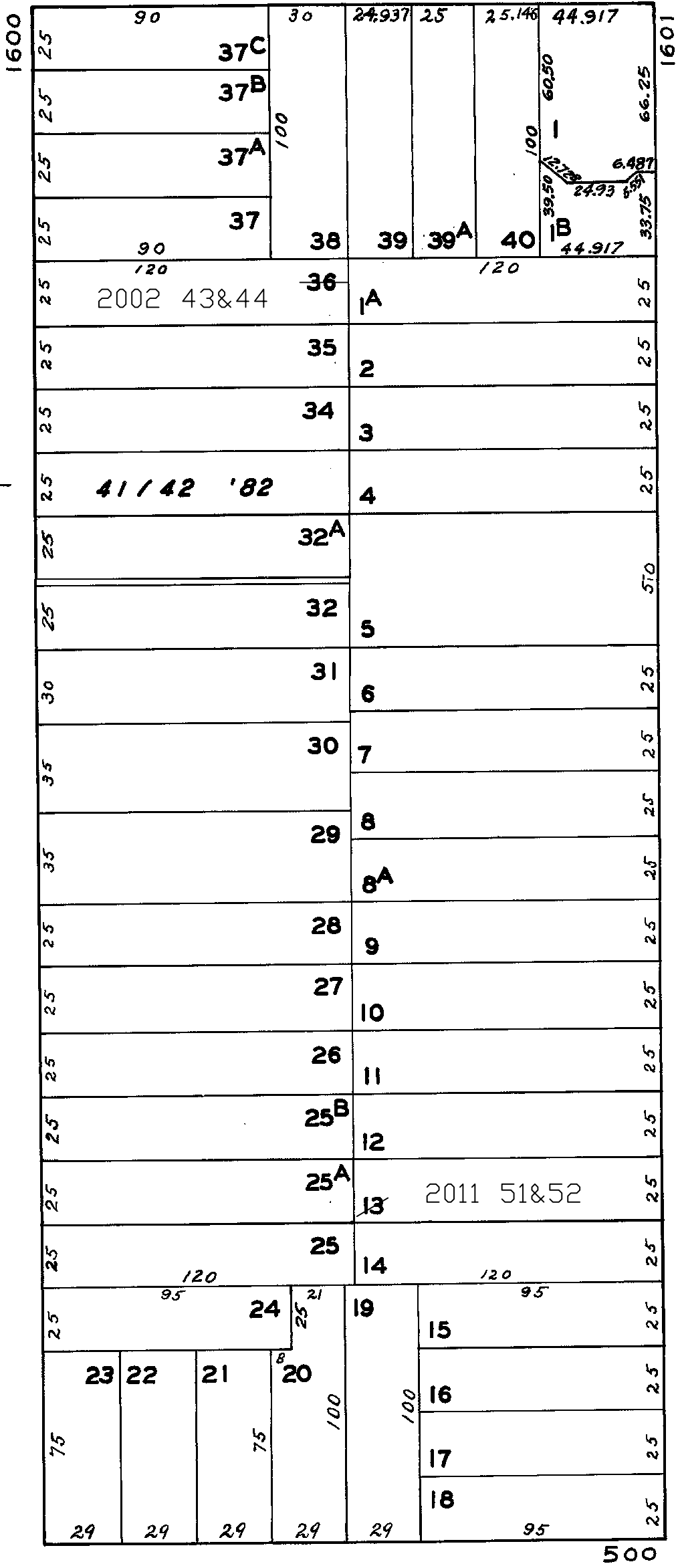


LAWTON

1628-30 12TH AVE.  
A CONDOMINIUM

LOT NO	UNIT NO	% COMMON AREA
41	1	58.519
42	2	41.481

12TH AVE.



11TH AVE.

1618 12TH AVE.  
A CONDOMINIUM

LOT	UNIT	% COMM. AREA
43	1616	45.95
44	1618	54.05

MORAGA