

REVISED '68

LOTS 44/45 INTO LOT 43 - 1949

NORIEGA

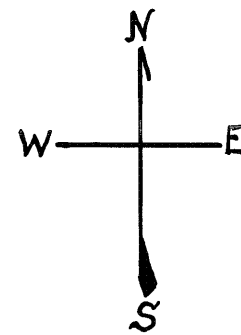
ORTEGA

2037A

G. G. HEIGHTS AND PART OF
SUNSET BLOCK 872

REVISED '58
" '69
Revised 1998

Lot 10 merged into 9 - 1950
lot 20 into lots 31 & 32 for 1998 roll

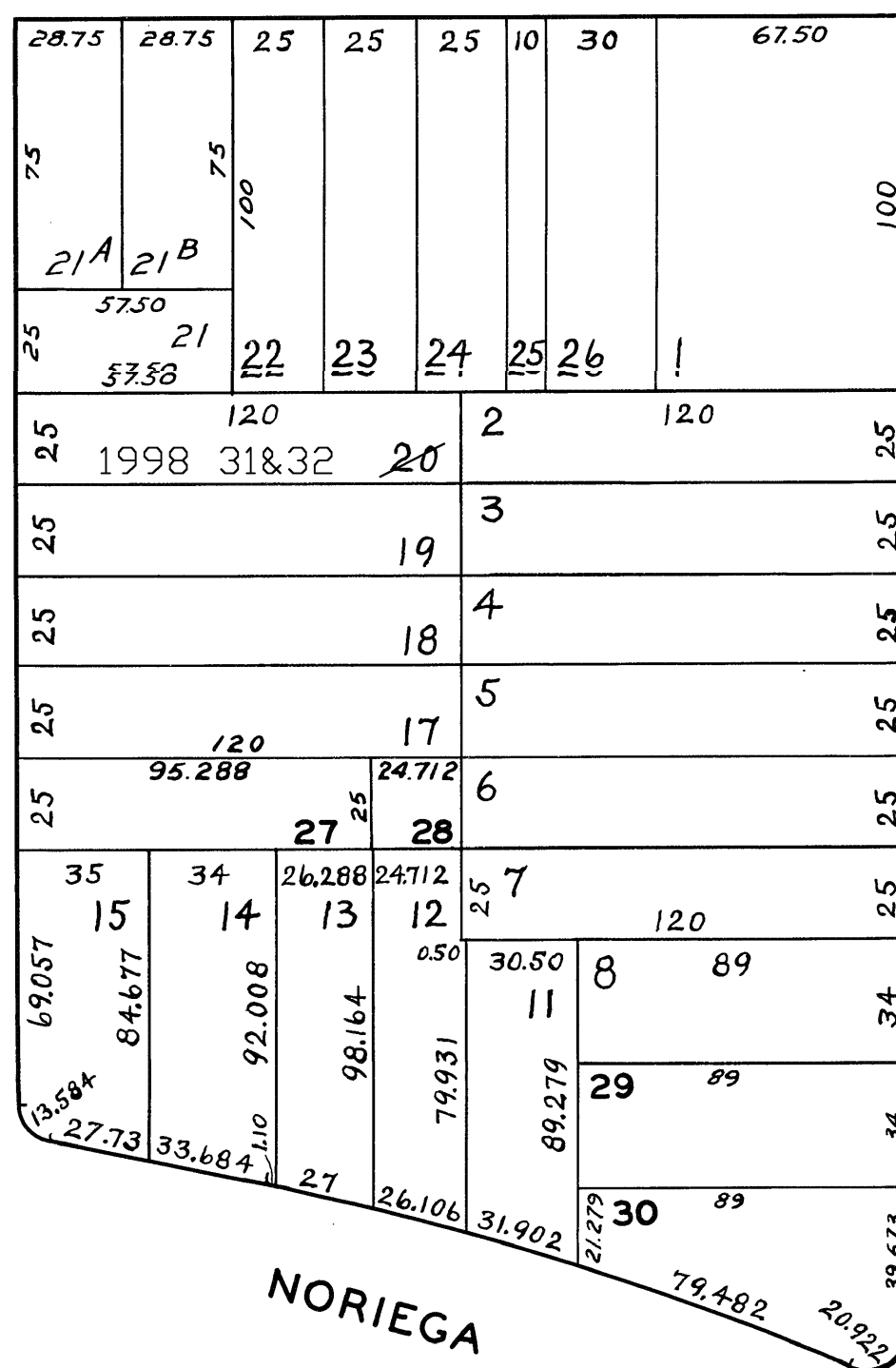


MORAGA

1722-1724 FUNSTON AVE.			
A CONDOMINIUM			
LOT	UNIT	% COMM.	AREA
31	1722	50.04	
32	1724	49.95	

FUNSTON AVE.

12TH AVE.



NORIEGA