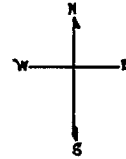


LOTS MERGED  
 LOT INTO LOT 19--  
 4<sup>1</sup>/<sub>2</sub> 5<sup>1</sup> 9<sup>1</sup> '38  
 5<sup>1</sup> 5<sup>1</sup> '38  
 9<sup>1</sup> 19<sup>TH</sup> AVE '41

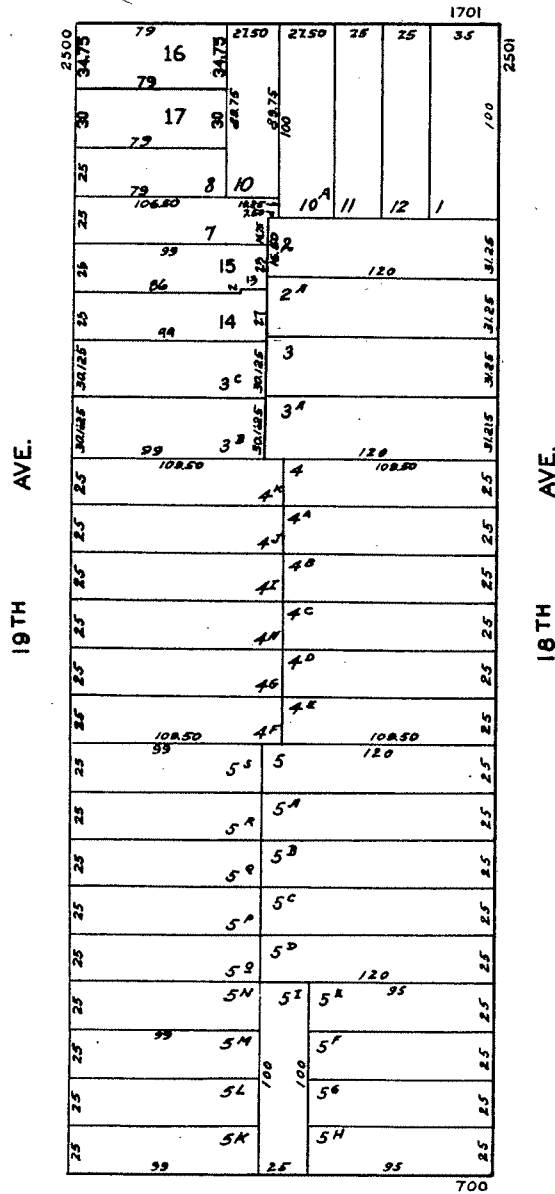
© COPYRIGHT SAN FRANCISCO  
 CITY & COUNTY ASSESSOR 1995  
 lot13 into lots16&17 for 2005 roll

2419  
 SUNSET BLK. 1191

REVISED '76  
 '91  
 Revised 2005



ULLOA



VICENTE