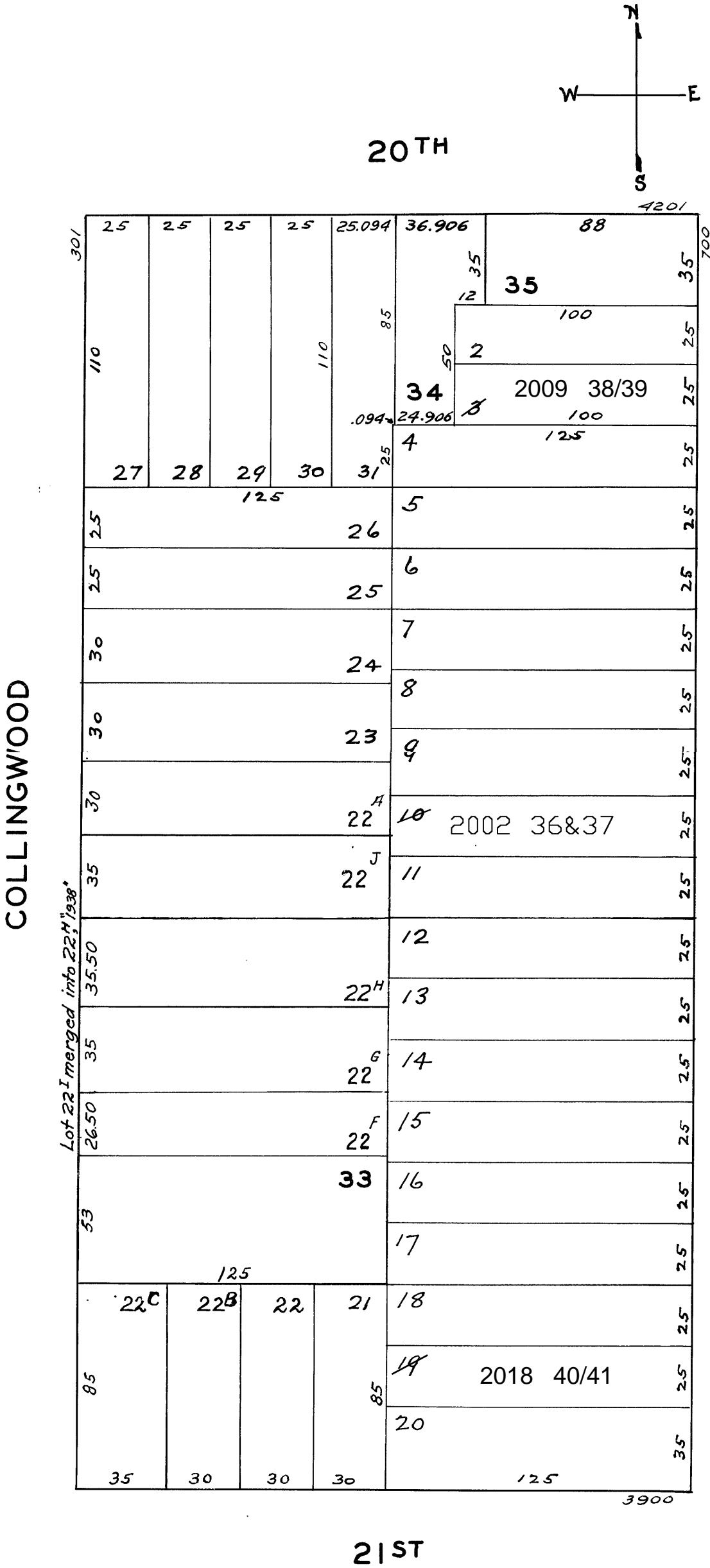


lot10 into lots36&37 for 2002 roll  
lot3 into lots38&39 for 2009 roll  
Lot 19 into lots 40 & 41 for 2018 roll

REVISED '62  
REVISED '74  
Revised 2002  
Revised 2009  
REVISED 2018



728-730 CASTRO ST.

A CONDOMINIUM

LOT	UNIT	% COMM.	AREA
36	728	50	
37	730	50	