

ASSESSOR-RECORDER'S OFFICE

© COPYRIGHT SAN FRANCISCO  
CITY & COUNTY ASSESSOR 1995

2775

lot12 inot lots57&58 for 2002 roll

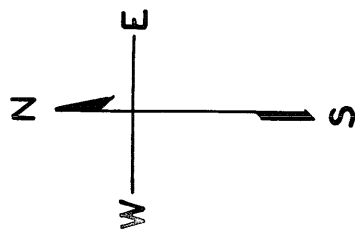
LOTS MERGED

LOT 5 INTO LOT 9 - 1920

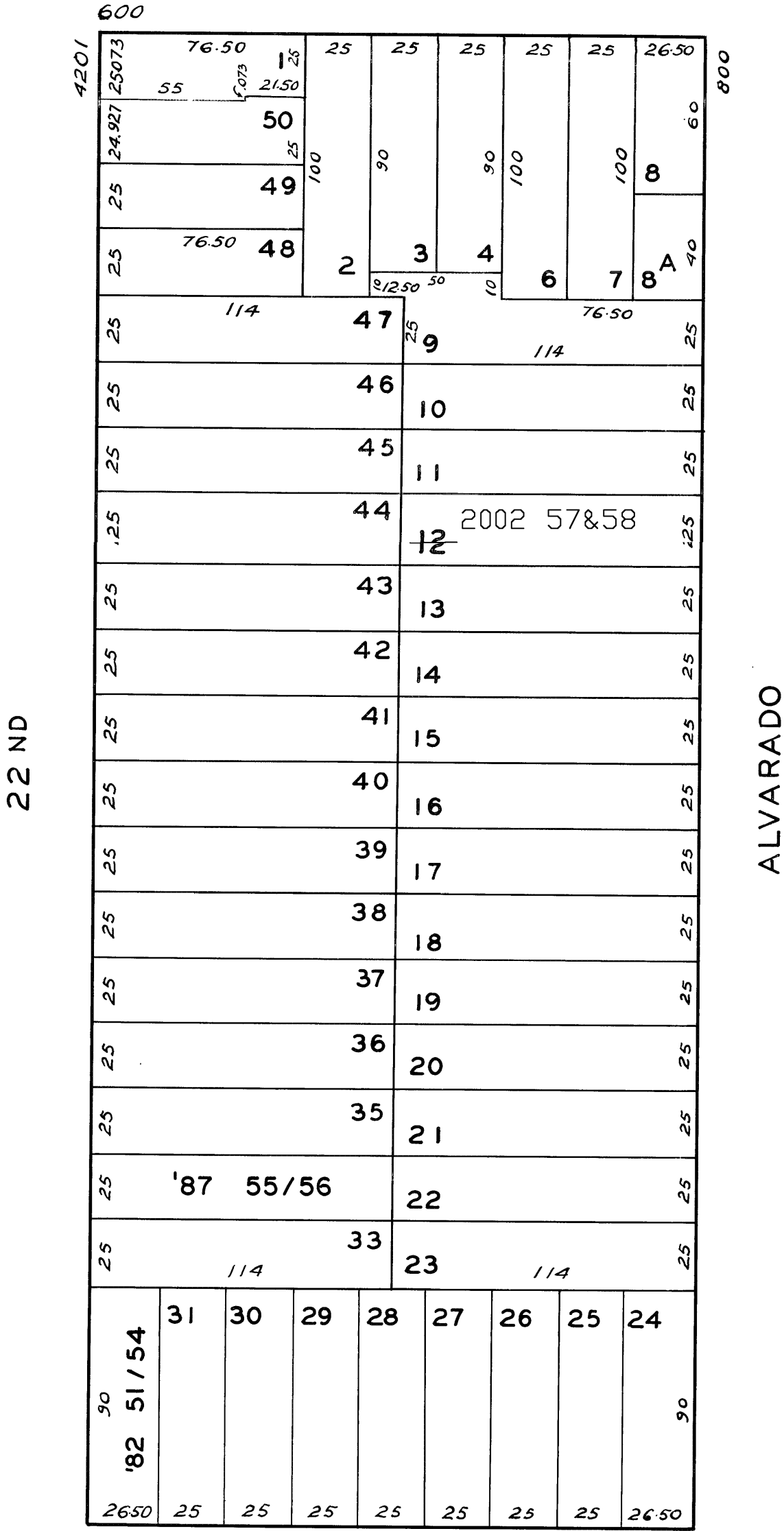
HEYMAN TR. LOTS 1-48

REVISED 1982  
" '87

Revised 2002



DOUGLASS



816-816 1/2 ALVARADO ST.  
A CONDOMINIUM

LOT	UNIT	% COMM. AREA
57	816	50.00
58	816 1/2	50.00

HOFFMAN AVE.

I HOFFMAN AVE.  
A CONDOMINIUM

LOT NO.	UNIT NO.	% COMMON AREA
51	IA	19.397
52	IB	23.587
53	IC	27.320
54	ID	29.696

4277 - 22ND ST.  
A CONDOMINIUM

LOT	UNIT	% COMM. AREA
55	100	38.14
56	200	61.86