

2779

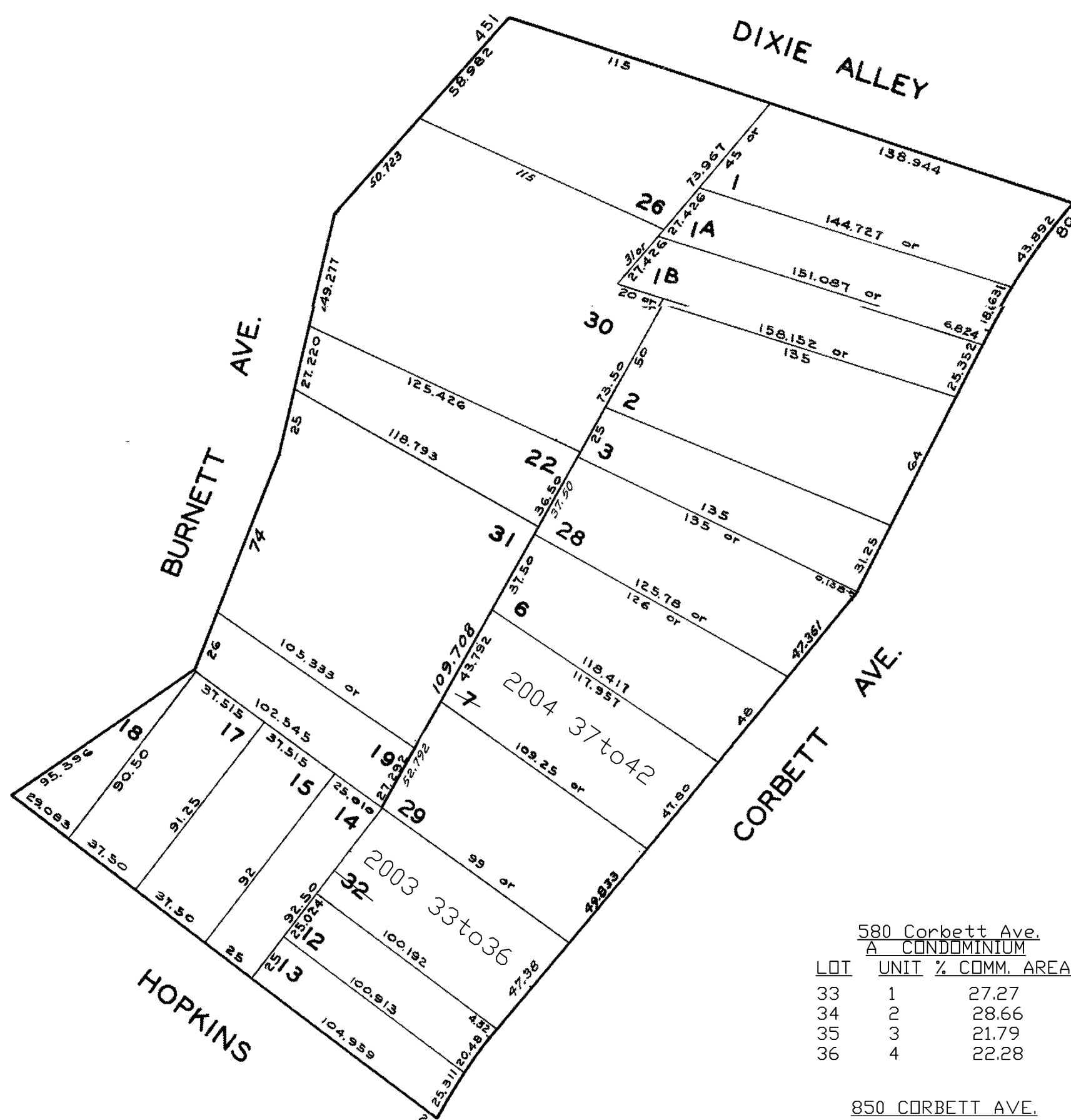
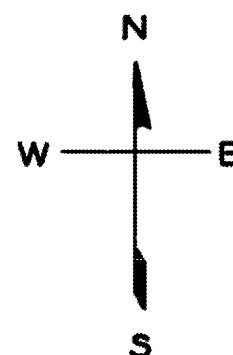
MARKET ST. HD. ASSN. BLK. 23
PIOCHE & ROBINSON SUBS. BLK. 23

LOTS MERGED

LOT 27 INTO LOT 1 - 1951
" 16 " " 15, 17 - 1954

lot32 into lots33to36 for 2003 roll
lot7 into lots37/42 for 2004 roll

REVISED	'65
"	'70
"	'77
"	'80

Revised 2003
Revised 2004

<u>580 Corbett Ave.</u>		
<u>A CONDOMINIUM</u>		
<u>LOT</u>	<u>UNIT</u>	<u>% COMM. AREA</u>
33	1	27.27
34	2	28.66
35	3	21.79
36	4	22.28

<u>850 CORBETT AVE.</u>		
<u>A CONDOMINIUM</u>		
<u>LOT</u>	<u>UNIT</u>	<u>% COMM. AREA</u>
37	1	18.12
38	2	14.23
39	3	13.55
40	4	13.51
41	5	20.46
42	6	20.13