

© COPYRIGHT SAN FRANCISCO  
CITY & COUNTY ASSESSOR 1995

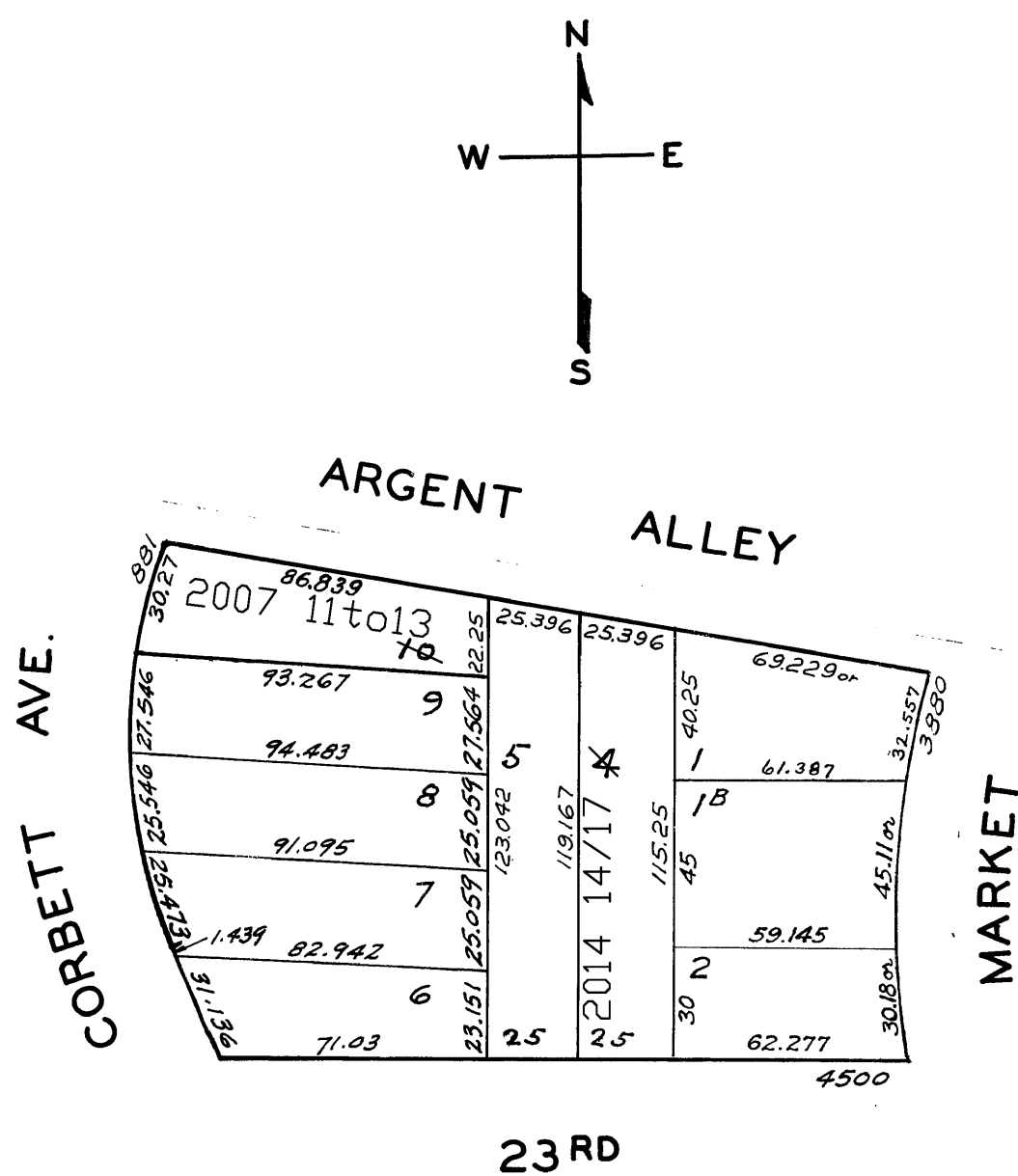
lot10 into lots11to13 for 2007 roll  
lot4 into lots14/17 for 2014 roll

2800

HEYMAN TR. LOTS 232-241

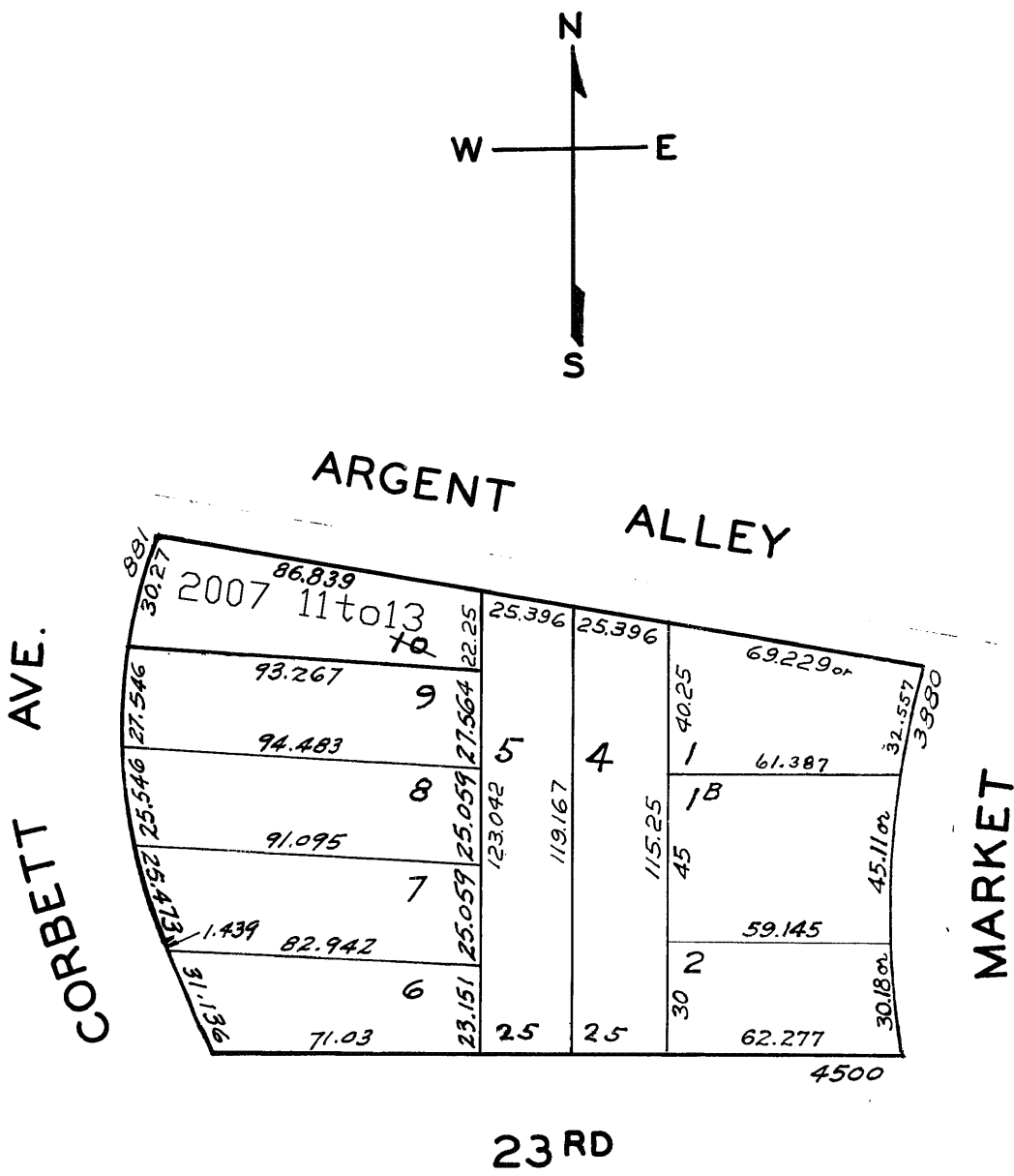
Revised 2007  
Revised 2014

*Lot 3 merged into 1B & 2 - 1938*



881 CORBETT AVE.			
A CONDOMINIUM			
LOT	UNIT	% COMM. AREA	
11	1	28.28	
12	2	26.64	
13	3	45.08	

Lot 3 merged into 1B & 2 - 1938



881 CORBETT AVE.		
A CONDOMINIUM		
LOT	UNIT	% COMM. AREA
11	1	28.28
12	2	26.64
13	3	45.08