

ASSESSOR-RECORDER'S OFFICE

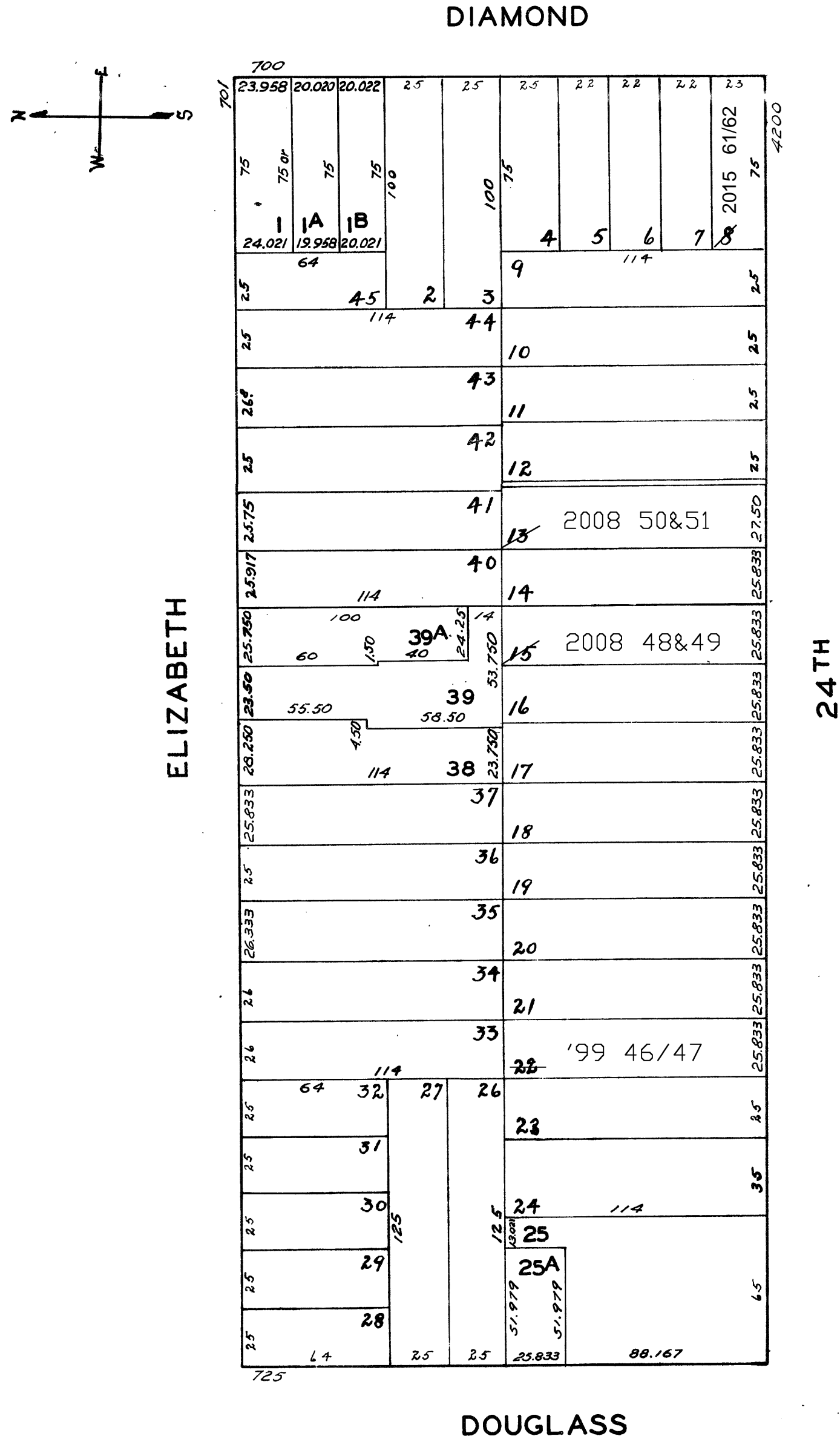
© COPYRIGHT SAN FRANCISCO
CITY & COUNTY ASSESSOR 1995

2830

lot 22 into lots 46/47 for 1999 roll
lot15 into lots48&49 for 2008 roll
lot13 into lots50&51 for 2008 roll
Lot 8 into lots 61 & 62 for 2015 roll

NOE GARDEN HD. UN. BLK. 10

Revised '99
Revised 2008
REVISED 2015



4270-4272 24TH STREET

A CONDOMINIUM			
LOT	UNIT	% COMM.	AREA
46	4270		52.73
47	4272		47.27