

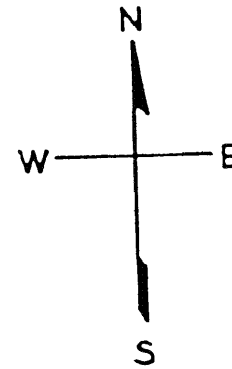
LOTS MERGED
Lot 2 into Lot 1 - 1943
" 16 " " 15 - "
" 32 " " 6 - "

lot34 into lots38&39 for 2002 roll
lot33 into lots42to44 for 2002 roll
lot24 into lots40&41 for 2004 roll
lot23 into lots45to47 for 2008 roll

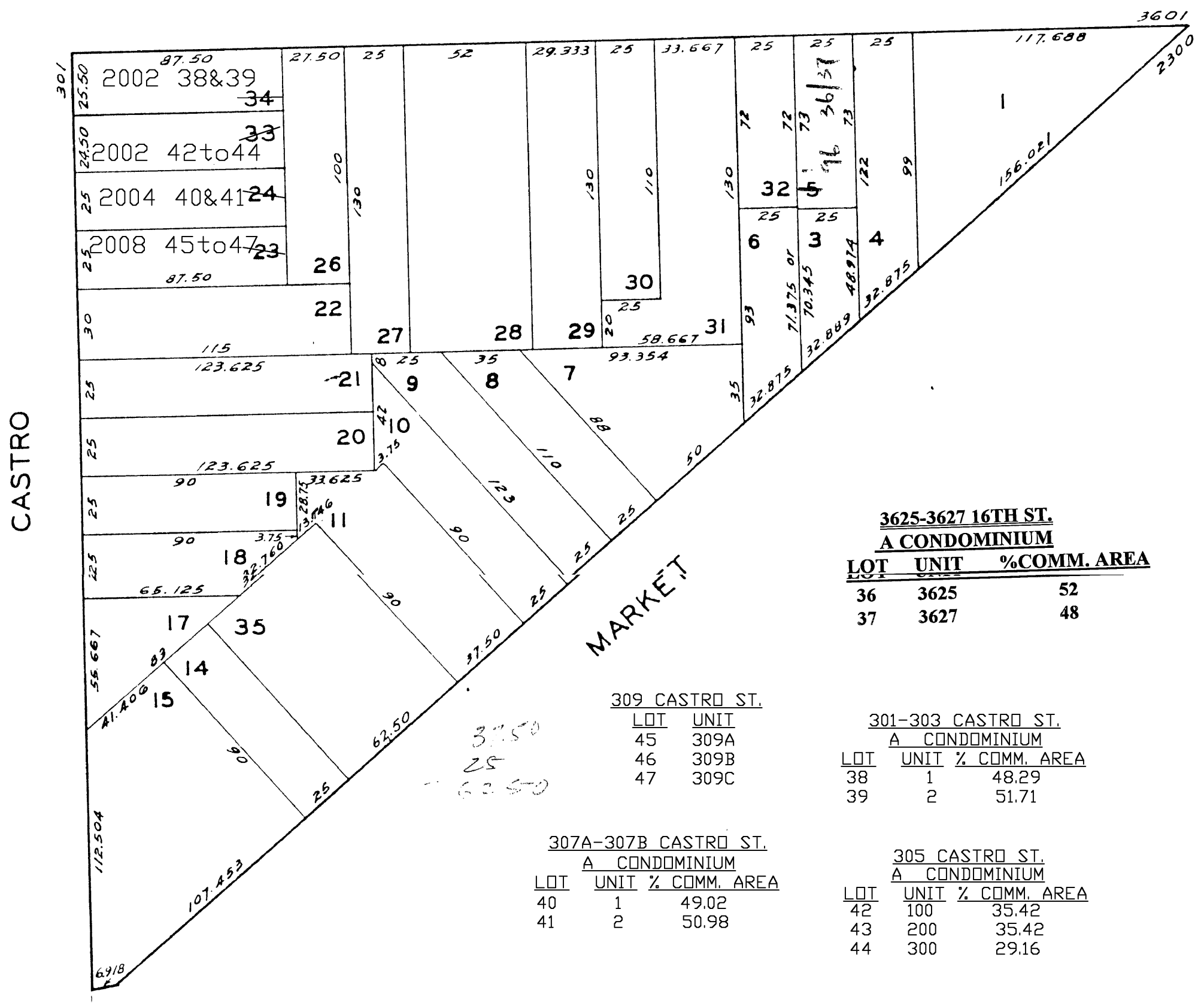
REVISED 1981
" 1982

" 196

Revised 2002
Revised 2004
Revised 2008



16TH



3625-3627 16TH ST. A CONDOMINIUM		
LOT	UNIT	% COMM. AREA
36	3625	52
37	3627	48

309 CASTRO ST.	
LOT	UNIT
45	309A
46	309B
47	309C

301-303 CASTRO ST. A CONDOMINIUM		
LOT	UNIT	% COMM. AREA
38	1	48.29
39	2	51.71

307A-307B CASTRO ST. A CONDOMINIUM		
LOT	UNIT	% COMM. AREA
40	1	49.02
41	2	50.98

305 CASTRO ST. A CONDOMINIUM		
LOT	UNIT	% COMM. AREA
42	100	35.42
43	200	35.42
44	300	29.16