

Block 3573
Sheet 2

Revised 2002

THE ALLIED BOX FACTORY		
A CONDOMINIUM		
LOT	UNIT	% COMM. AREA
74	M101	2.81
75	M102	3.41
76	M103	2.49
77	M104	3.67
78	M105	7.00
79	S100	3.99
80	S102	1.18
81	S103	1.18
82	S104	1.18
83	S105	1.18
84	S106	1.18
85	S107	1.18
86	S108	1.18
87	S109	1.15
88	A100	1.28
89	A101	3.10
90	A102	1.65
91	A103	5.09
92	A104	4.46
93	M201	3.23
94	M202	3.29
95	M203	2.85
96	M204	2.46
97	M205	7.00
98	A200	1.24
99	A202	1.81
100	M301	4.47
101	M302	5.13
102	M303	5.26
103	M304	4.99
104	M305	9.91

(3573/4&5into74/104

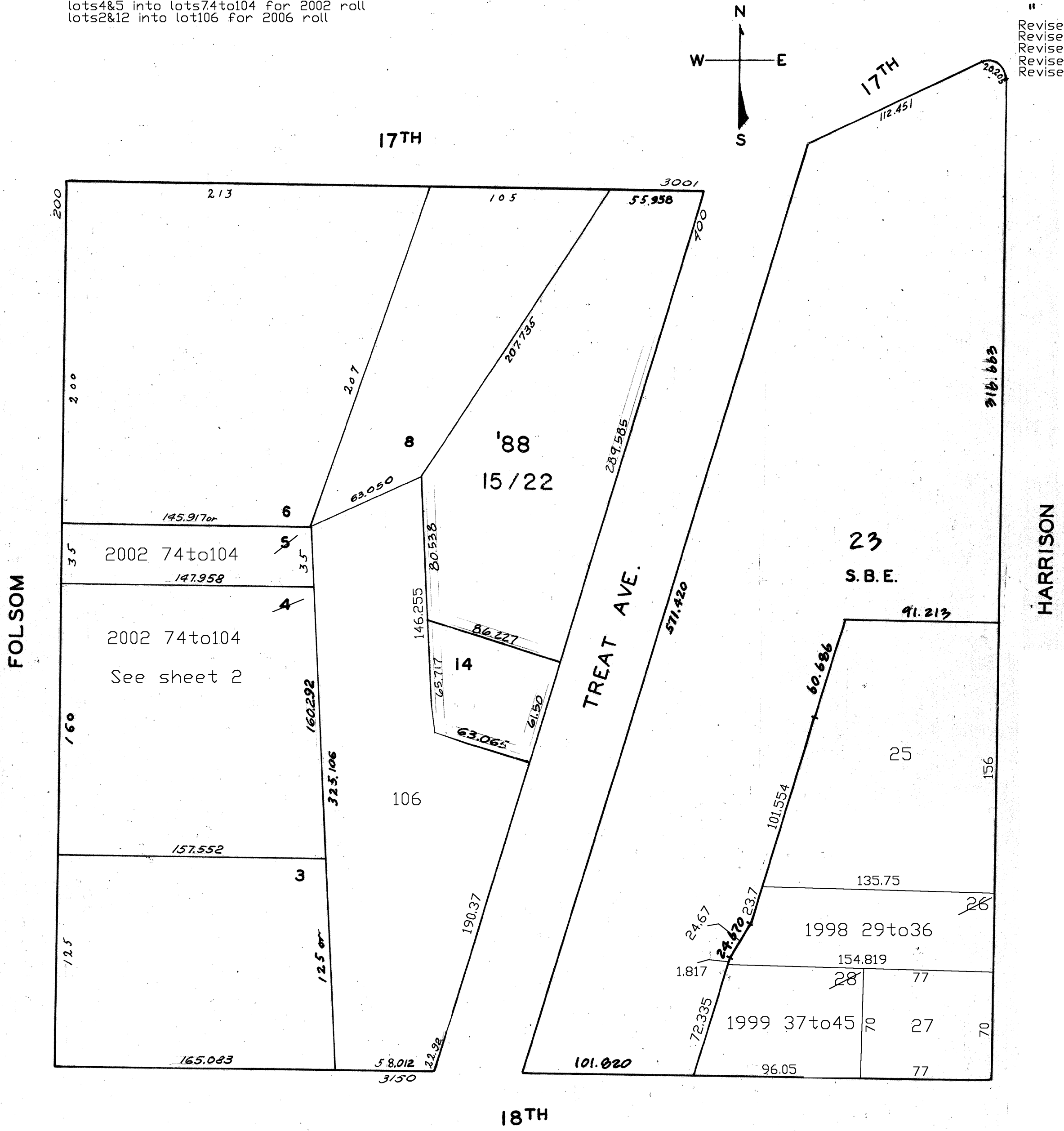
LOTS MERGED

Lots 7A,8,9,10 merged into Lot 7. '1943
LOT 1 INTO LOTS 23/24 (S.B.E. LETTER '89)
lot24 into lots25to28 for 1997 roll
lot26 into lots29to36 for 1998 roll
lot28 into lots37to45 for 1999 roll
lots4&5 into lots74to104 for 2002 roll
lots2&12 into lot106 for 2006 roll

MISSION BLK. 50

REVISED '78

" '87
" '88
" '89
Revised 1997
Revised 1998
Revised 1999
Revised 2002
Revised 2006



TREAT STREET CONDOMINIUMS
A CONDOMINIUM

LOT	UNIT	% COMM. AREA
15	1A	12.43
16	1B	13.73
17	1C	10.43
18	1D	9.66
19	2E	12.84
20	2F	11.77
21	2G	10.72
22	2H	18.42

2170 HARRISON ST.
A CONDOMINIUM

LOT	UNIT	% COMM. AREA
29	1	11.31
30	2	13.81
31	3	12.90
32	4	11.98
33	5	11.22
34	6	13.08
35	7	11.92
36	8	13.78

3118 18TH ST.
A CONDOMINIUM

LOT	UNIT	% COMM. AREA
37	1	10.45
38	2	11.20
39	3	11.23
40	4	15.76
41	5	9.96
42	6	10.80
43	7	10.84
44	8	10.54
45	9	9.22