

283 DORLAND ST.

3580

LOTS MERGED

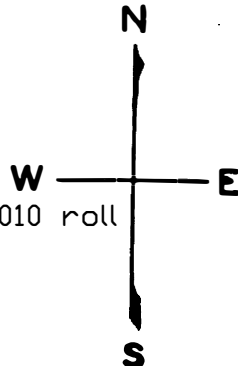
LOTS 10 INTO LOT 9 - 1943
" 41A " " 41 - "
" 42B " " 42A - "
" 50 " " 49 - 1951
" 52/58 " " 51 - 1941 lot45 into lots178/181 for 2010 roll
lot2 into lots173to175 for 2008 roll
lot43 into lots171&172 for 2010 roll

216 - 216 1/2 DORLAND ST.

A CONDOMINIUM

LOT	UNIT	% COMM. AREA
163	216	55
164	216 1/2	45

lot35 into lots182to186 for 2012 roll



A CONDOMINIUM

LOT	UNIT	% COMM. AREA
194	101	14.46
195	102	14.48
196	201	18.70
197	202	16.83
198	301	18.70
199	302	16.83

Lot 26 into lots 193 to 195 for 2015 roll
Lot 32 into lots 187 to 189 for 2015 roll
Lot 69 into lots 190 to 192 for 2016 roll
Lots 36 & 76 into lot 196 for 2017 roll

MISSION BLK. 94
SHEET 1

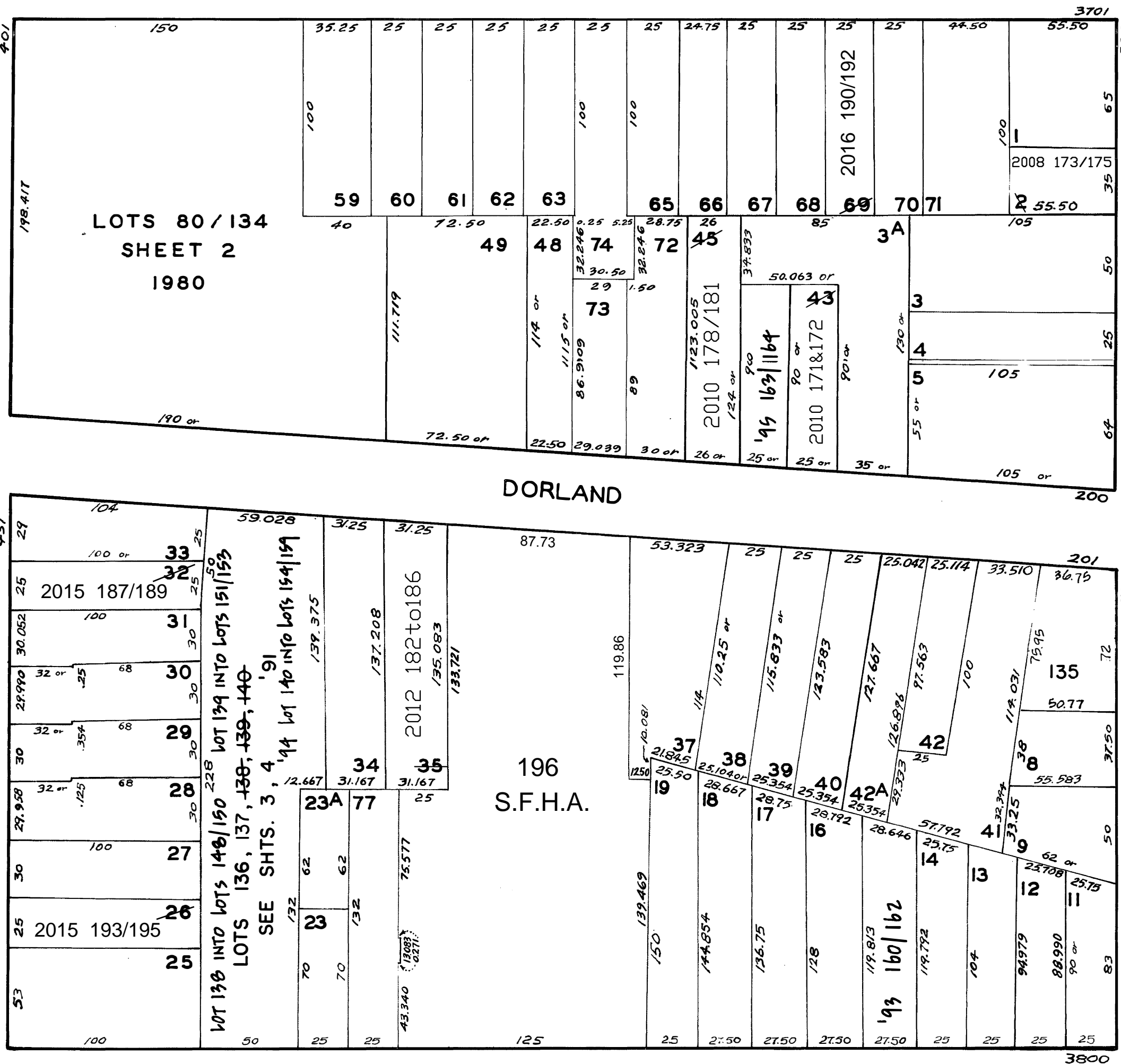
REVISED	'57
"	'61
"	'67
"	'74
"	'80
"	'89
"	'91
"	'92
"	'93
"	'94
"	'95

Revised 2008
Revised 2010
Revised 2012

REVISED 2015
REVISED 2016
REVISED 2017

SANCHEZ

CHURCH



3818 - 18TH ST.

A CONDOMINIUM

LOT	UNIT	% COMM. AREA
160	1	33.33
161	2	33.33
162	3	33.34

3876 18TH ST.

A CONDOMINIUM

LOT	UNIT	% COMM. AREA
148	103	33.33
149	104	33.33
150	105	33.34

285 DORLAND ST.

A CONDOMINIUM

LOT	UNIT	% COMM. AREA
151	103	33.33
152	104	33.33
153	105	33.34

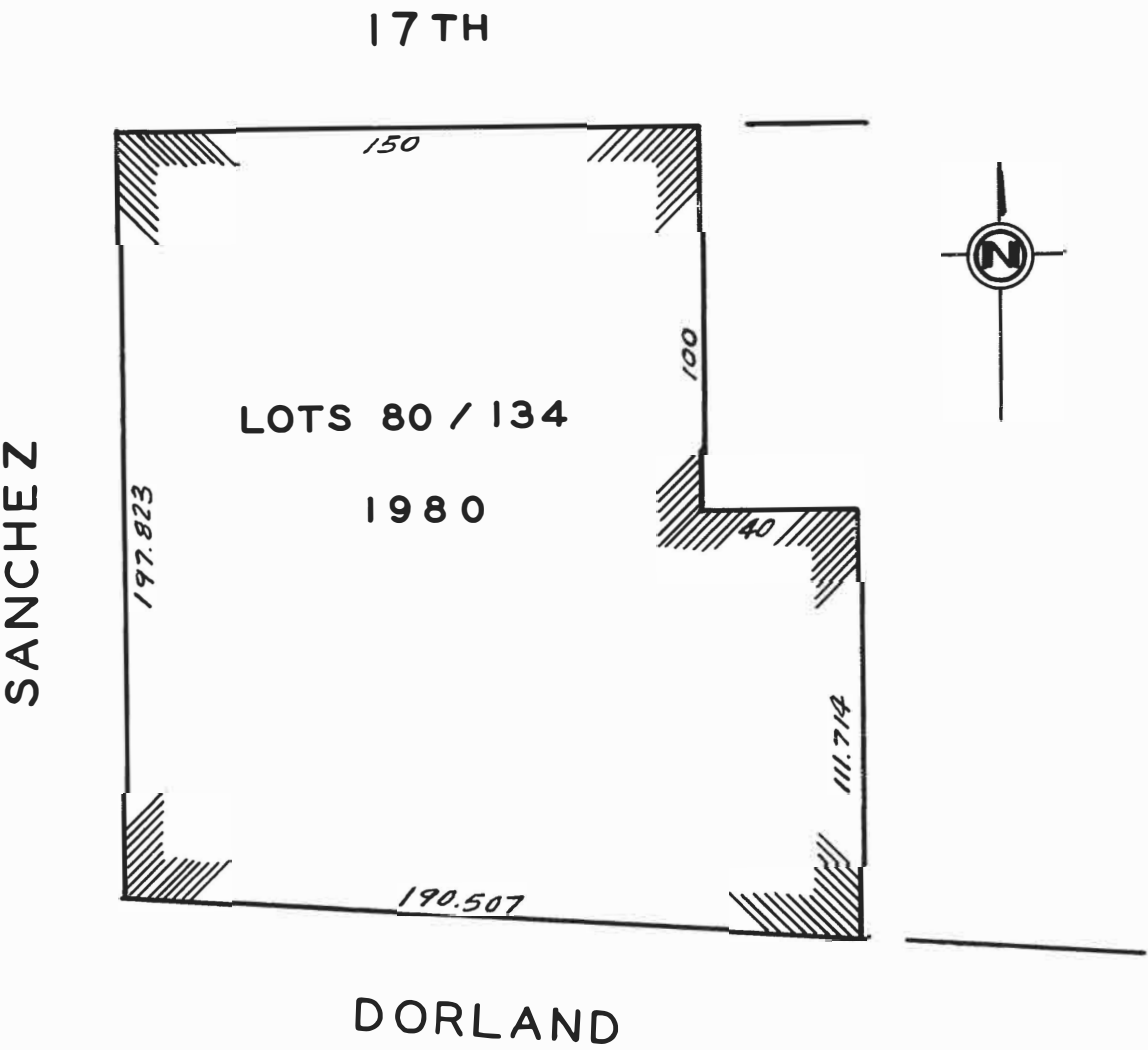
3580

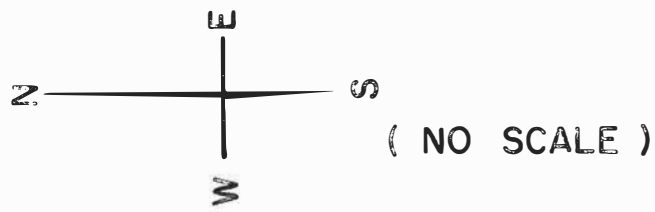
SHEET 2

CASA SANCHEZ

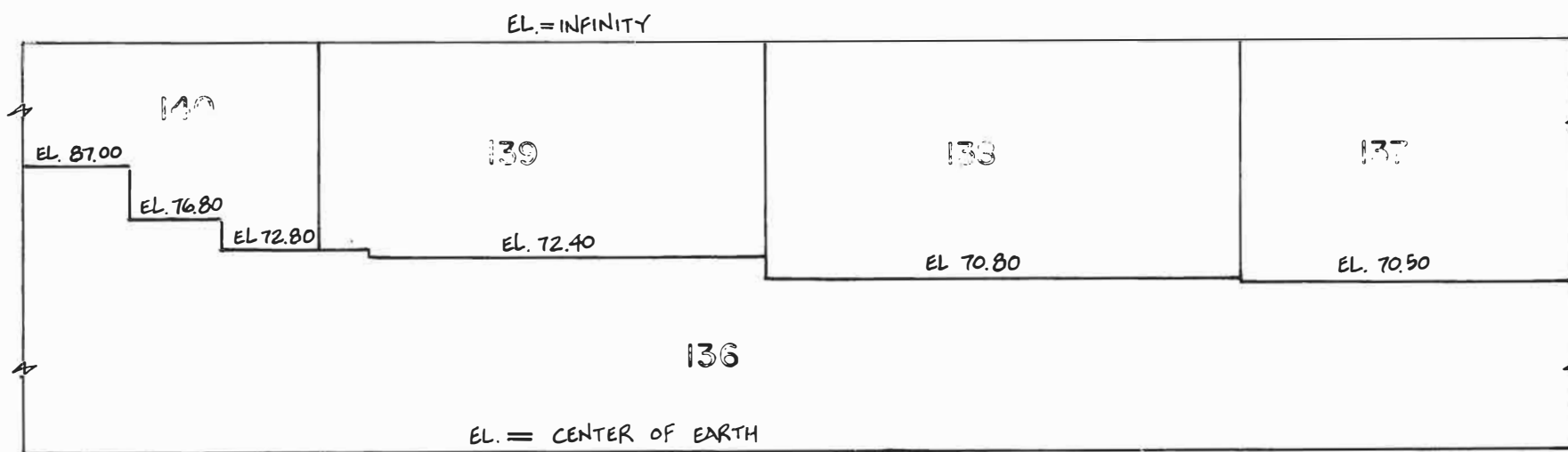
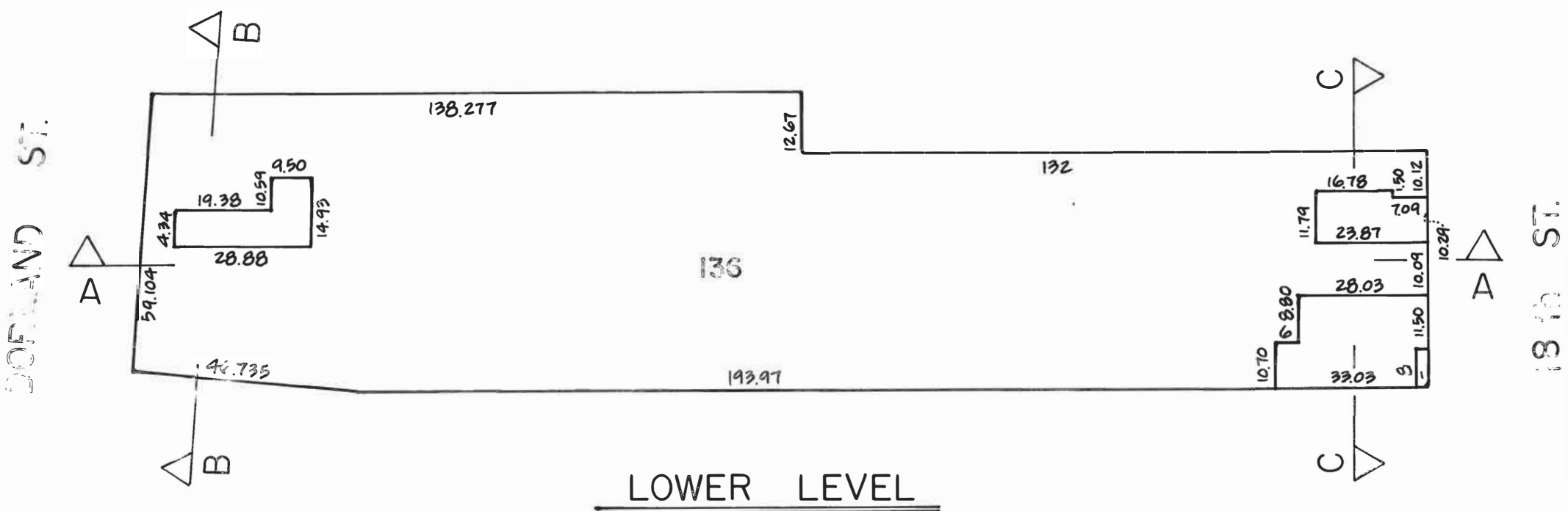
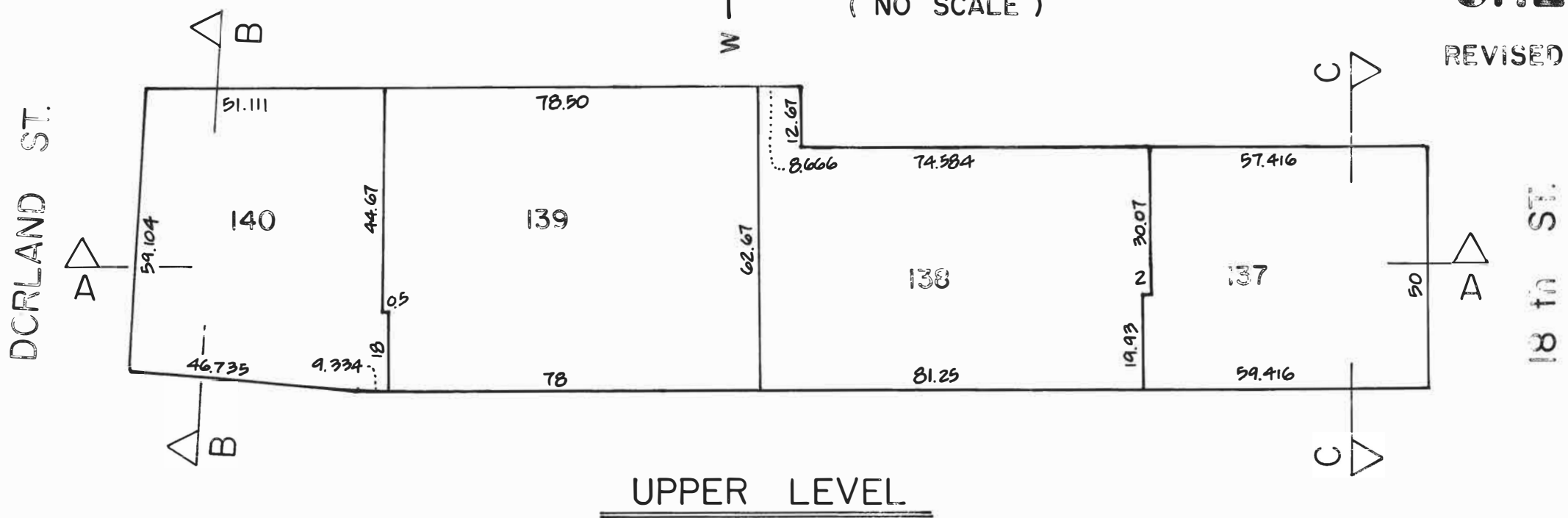
A CONDOMINIUM

LOT NO.	UNIT NO.	% COMMON AREA	LOT NO.	UNIT NO.	% COMMON AREA	LOT NO.	UNIT NO.	% COMMON AREA
80	1010	2.66	99	3320	1.30	118	2160	1.15
81	1020	2.24	100	3330	1.29	119	2170	2.15
82	1030	2.24	101	3340	1.26	120	2180	1.36
83	1040	2.24	102	3350	1.06	121	2210	1.84
84	1050	2.24	103	3360	1.06	122	2220	1.95
85	1060	2.24	104	1110	2.29	123	3110	2.29
86	1070	2.24	105	1120	1.67	124	3120	1.67
87	1080	2.36	106	1130	1.26	125	3130	1.41
88	2310	1.56	107	1140	2.40	126	3140	2.59
89	2320	2.12	108	1150	1.02	127	3150	2.96
90	3010	1.91	109	1160	1.34	128	3160	1.73
91	3020	1.66	110	1170	2.09	129	3170	1.64
92	3030	1.89	111	1210	1.67	130	3180	1.50
93	3040	1.80	112	1220	1.64	131	3210	1.84
94	3050	1.89	113	2110	2.29	132	3220	1.95
95	3060	1.66	114	2120	1.67	133	3370	1.79
96	3070	1.66	115	2130	1.41	134	3380	1.46
97	3080	1.89	116	2140	2.62			
98	3310	1.15	117	2150	1.73			



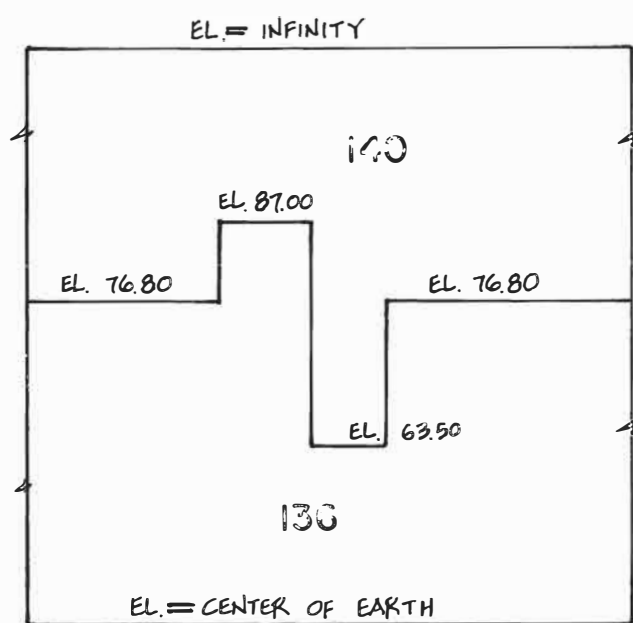


REVISED 1991

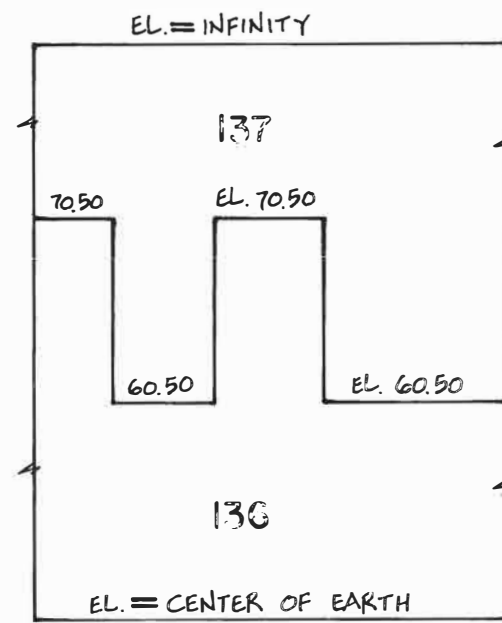


SECTION A-A

NOTE : ELEVATION DETAILS SEE MAP BOOK "Y", PAGE 49 THRU 51



SECTION B-B



SECTION C-C