

LOTS MERGED
 LOTS 43 INTO LOT 5 1948
 " 49-50 " " 48 "
 " 56 " " 55 "
 " 61-62 " " 60 "
 " 64-65 " " 63 "
 " 67 " " 62 "
 48A, 49A, 49B, 50A "1942"
 31 30
 25A, 32 into RAYBURN ST. "1919"
 14 13 "1945"
 10A ST. '55
 42 97/98 '81
 73 95/96 '83

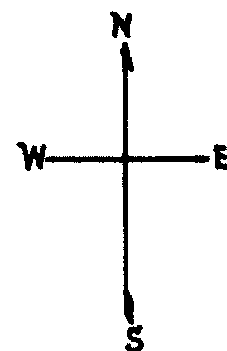
lot53A into lots111&112 for 2007 roll
 lot53 into lots113&114 for 2008 roll
 lot15 into lots115to117 for 2010 roll
 lot13 into lots109&110 for 2011 roll

CONDOMINIUMS		
LOT NO.	UNIT NO.	% COMMON AREA
91	719	50.125
92	721	49.875
93	707	50.576
94	709	49.424
95	713	50.562
96	715	49.438

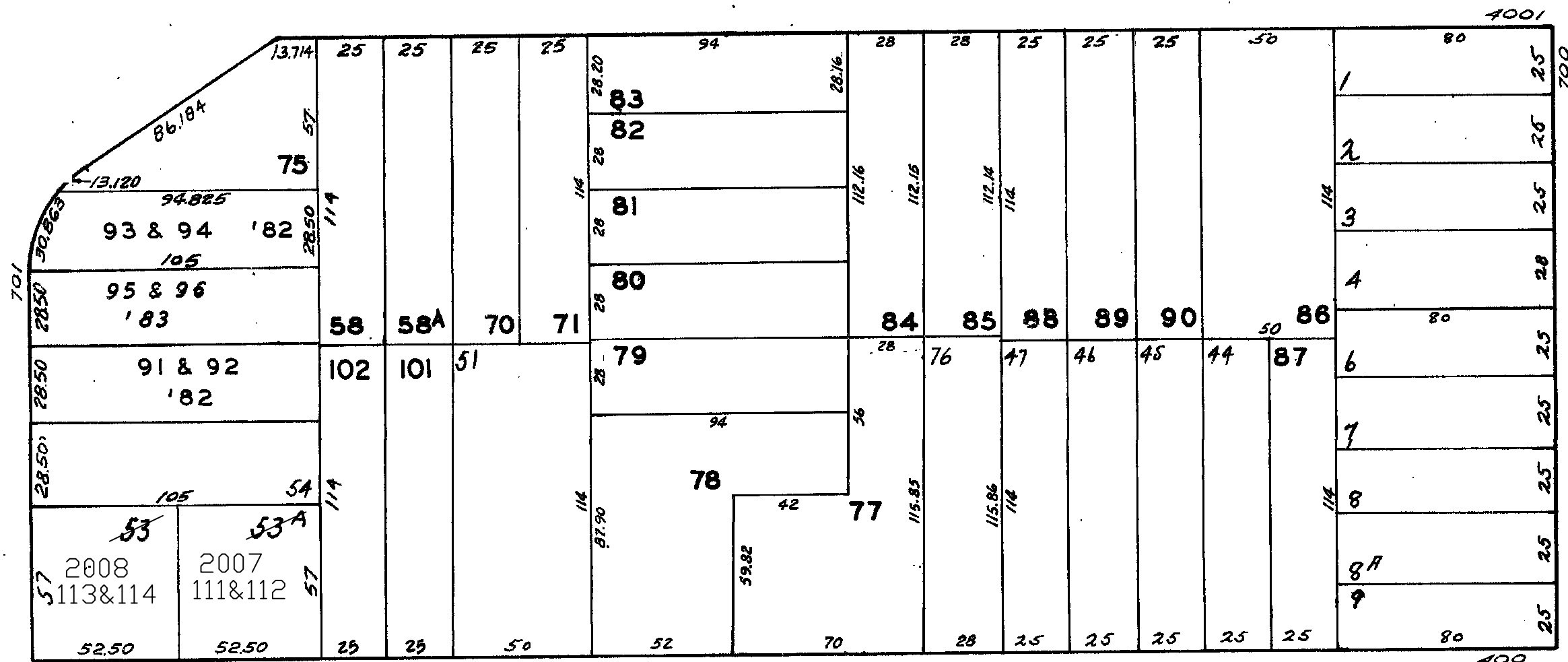
REVISED '58

" '62
 " '65
 " '69
 " '74
 " '81
 " '82
 " '83
 " '90
 " '91
 " '93

Revised 2007
 Revised 2008
 Revised 2010
 Revised 2011



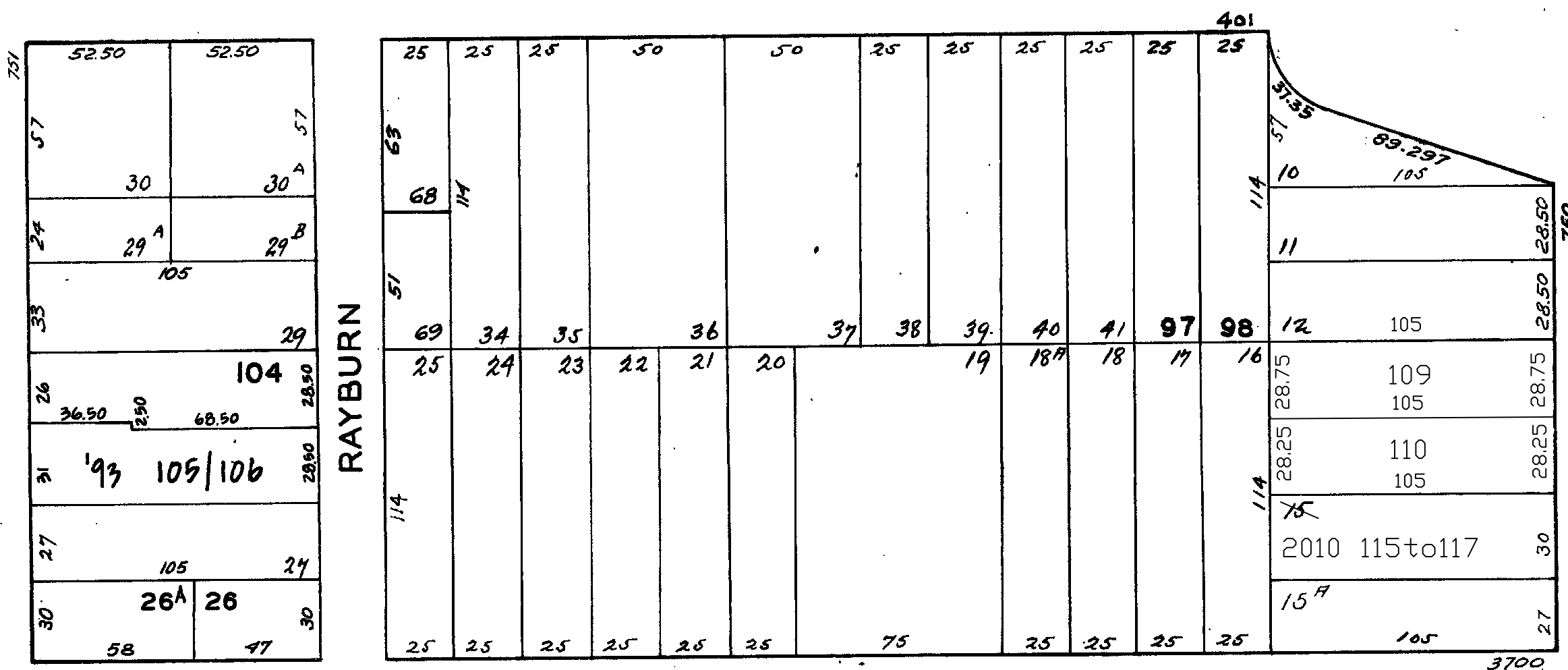
20 TH



NOE

LIBERTY

SANCHEZ



21 ST.

482-484 LIBERTY ST.
 A CONDOMINIUM
 LOT UNIT % COMM. AREA
 111 482 56.8
 112 484 43.2

777 NOE ST & 10 RAYBURN ST.
 A CONDOMINIUM
 LOT UNIT % COMM. AREA
 109 777 42.
 106 10 58