

ASSESSOR-RECORDER'S OFFICE

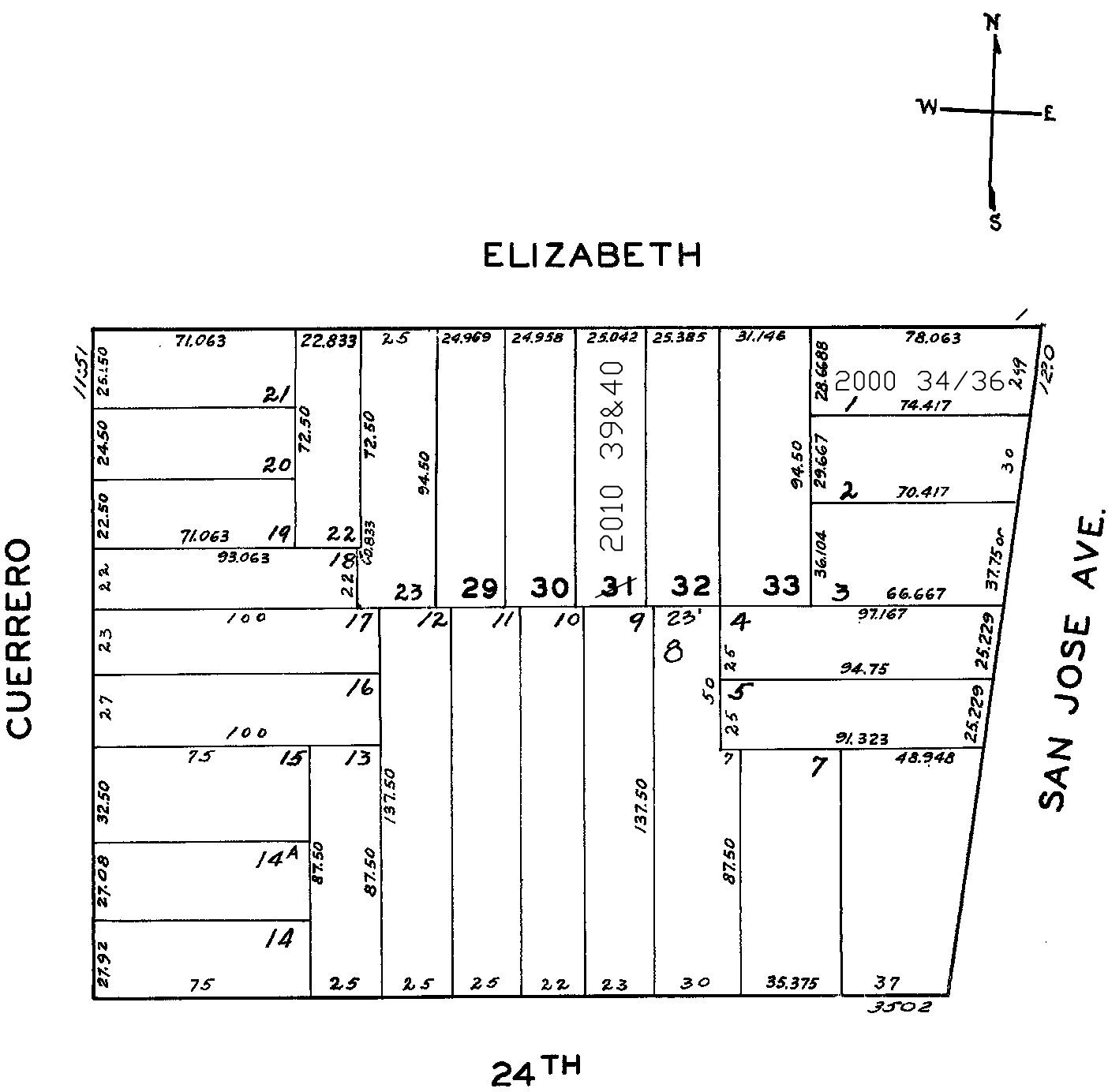
© COPYRIGHT SAN FRANCISCO
CITY & COUNTY ASSESSOR 1995

3645
HORNER'S ADDN. BLK. 10

lot 1 into lots 34/36 for 2000 roll
lot 31 into lots 39&40 for 2010 roll

REVISED '59

Revised 2000
Revised 2010



112 SAN JOSE AVE.

A CONDOMINIUM		
LOT	UNIT	% COMM. AREA
34	1	35.3
35	2	35.9
36	3	28.8