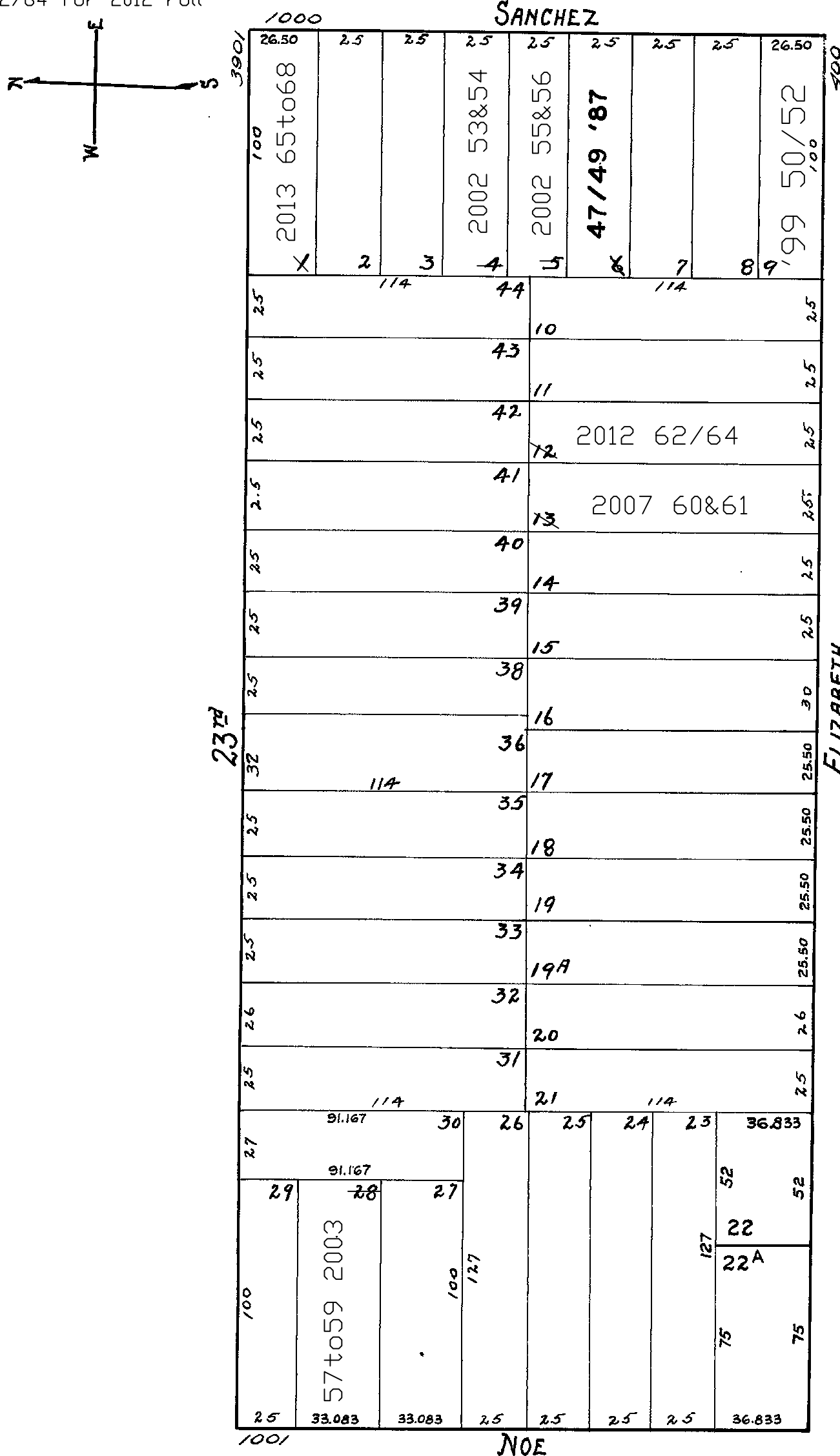


Revised '99
Revised 2002
Revised 2003
Revised 2007
Revised 2012
Revised 2013

LOTS MERGED
 LOTS 37 INTO LOT 36 1943
 6 45, 46 1984

lot 9 into lots 50/52 for 1999 roll lot1 into lots65to68 for 2013 roll
 lot4 into lots53&54 for 2002 roll
 lot5 into lots55&56 for 2002 roll
 lot28 into lots 57to59 for 2003 roll
 lot13 into lots60&61 for 2007 roll
 lot12 into lots62/64 for 2012 roll



A CONDOMINIUM

LOT UNIT %COMM AREA

47	1028	38.00
48	1026	36.51
49	1026A	25.49

A CONDOMINIUM

<u>LOT</u>	<u>UNIT</u>	<u>% COMM. AREA</u>
55	1022	67.5
56	1024	32.5

A CONDOMINIUM

<u>LOT</u>	<u>UNIT</u>	<u>% COMM. AREA</u>
50	1042	36.57
51	1044	34.02
52	1046	29.41

A CONDOMINIUM

<u>LOT</u>	<u>UNIT</u>	<u>% COMM. AREA</u>
53	1018	41.75
54	1020	58.25

A CONDOMINIUM

<u>LOT</u>	<u>UNIT</u>	<u>% COMM. AREA</u>
57	1	31.51
58	2	38.64
59	3	29.85

A CONDOMINIUM

<u>LOT</u>	<u>UNIT</u>	<u>% COMM. AREA</u>
60	430	53.2
61	432	46.8