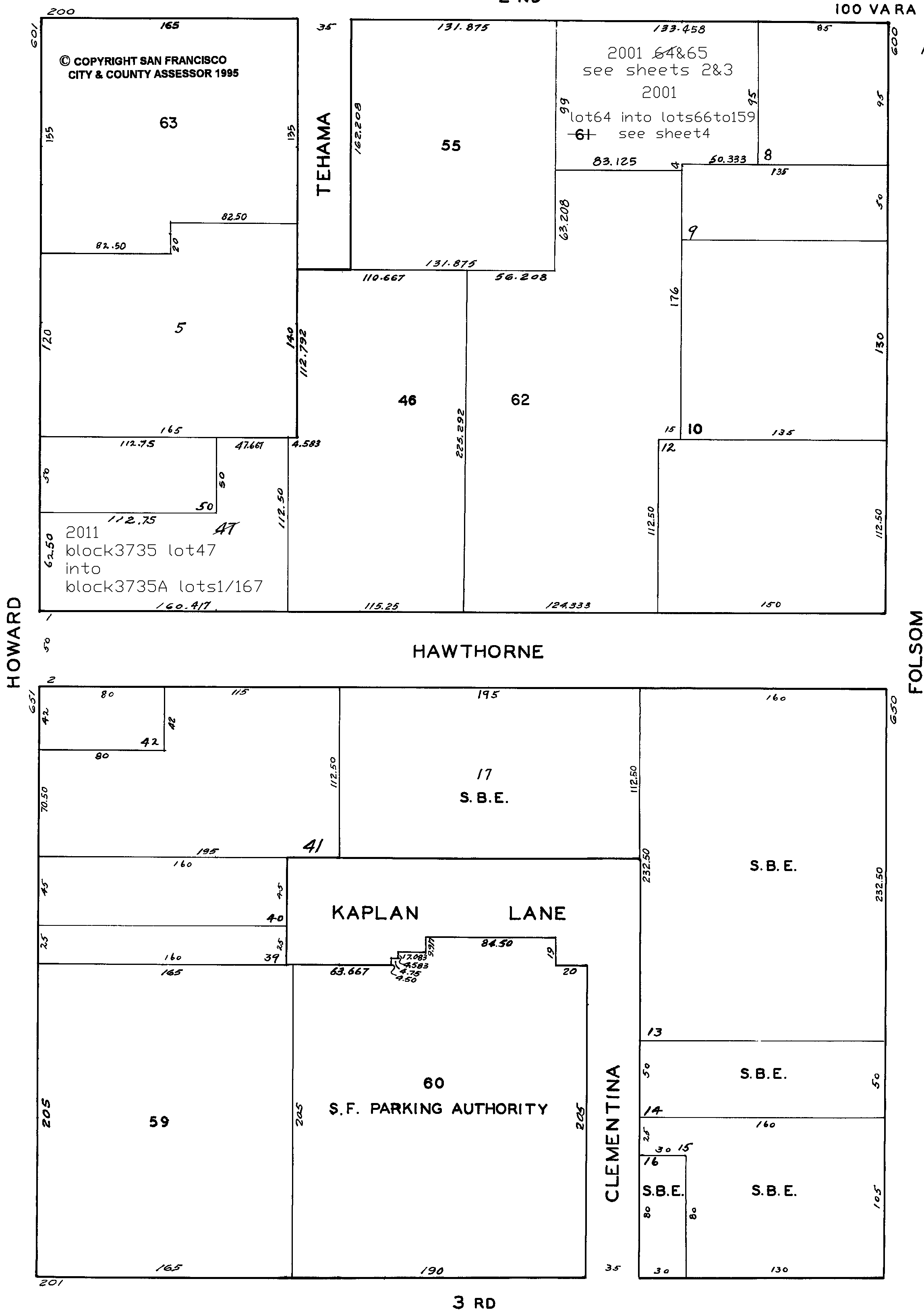


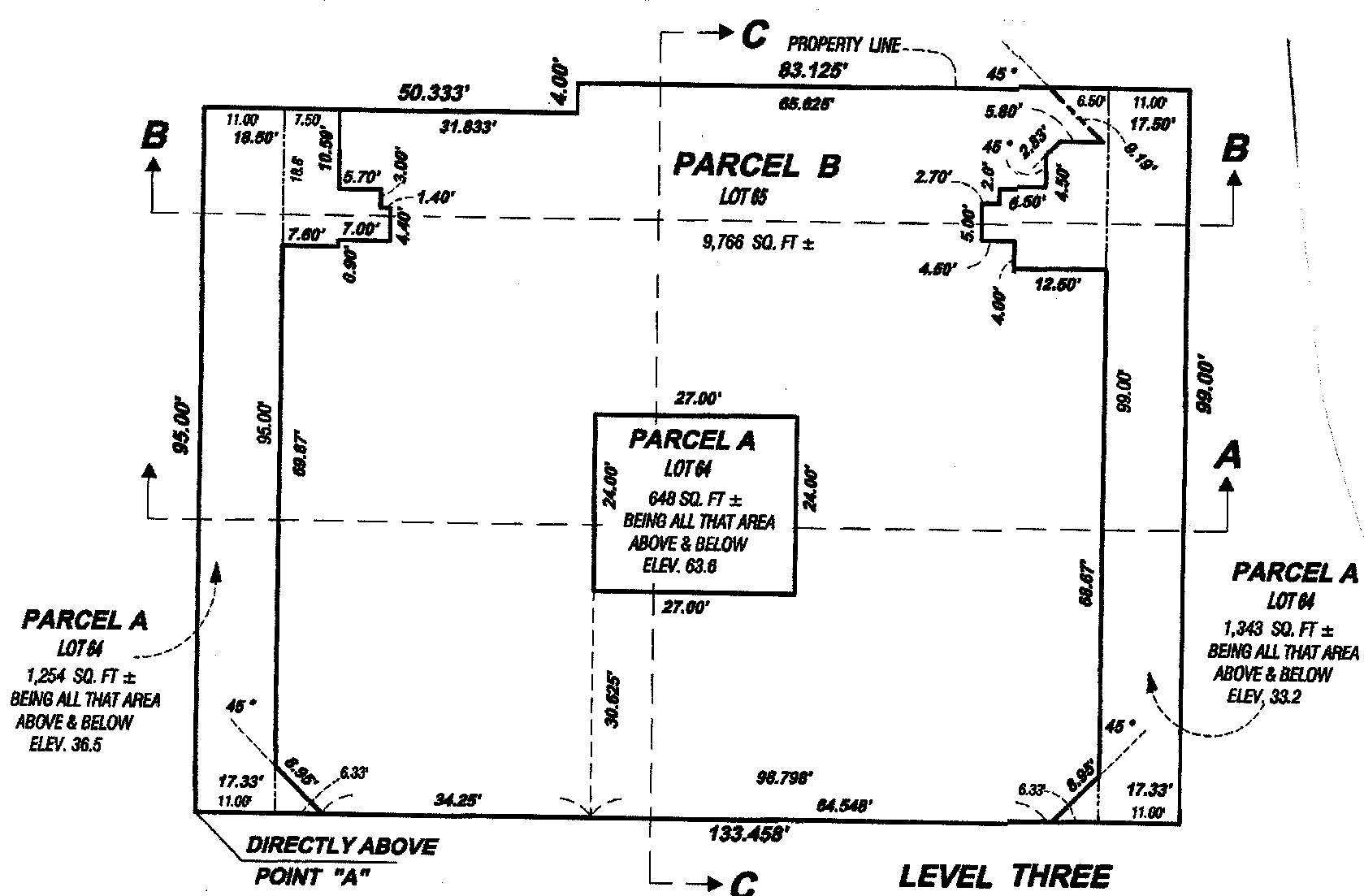
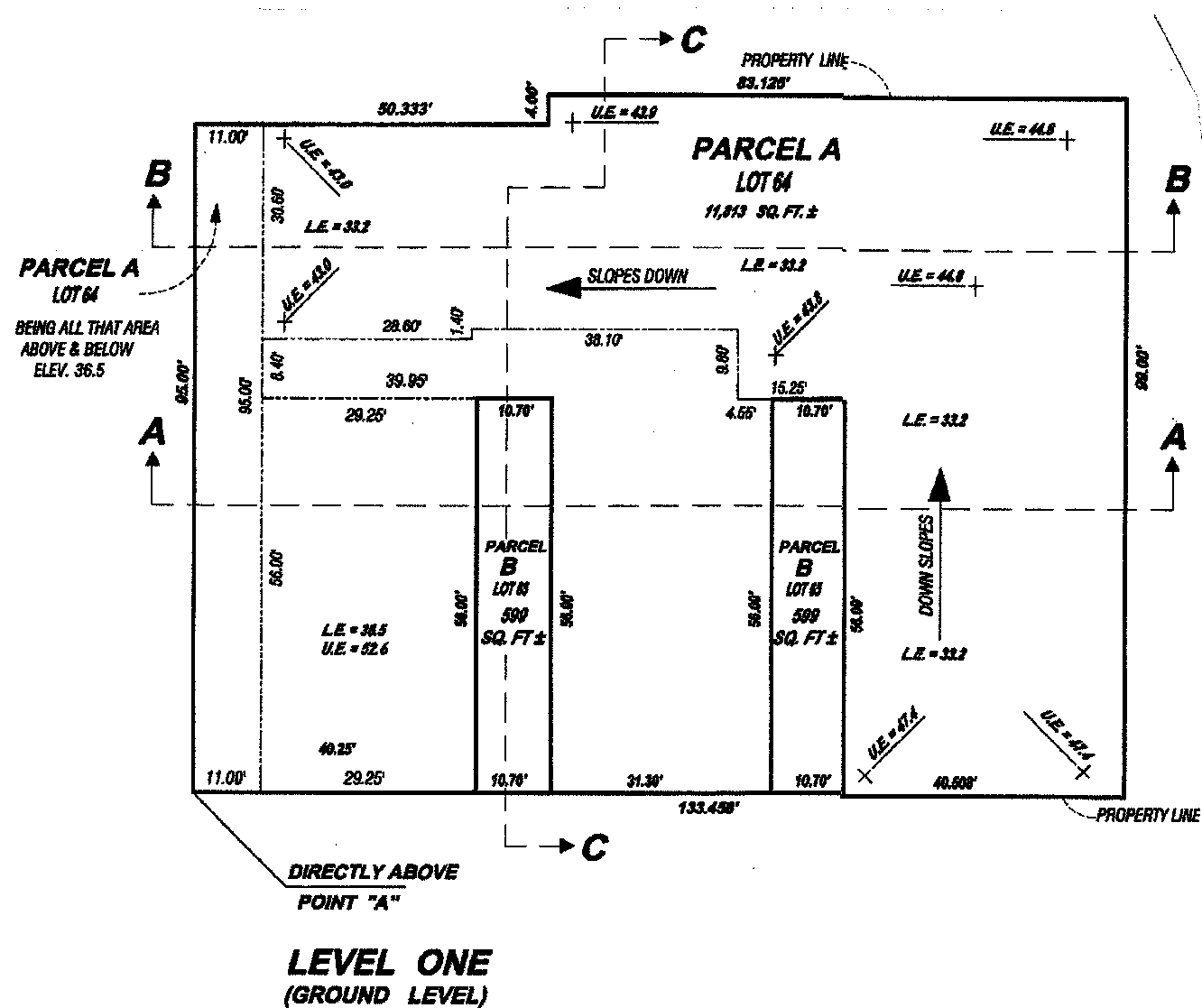
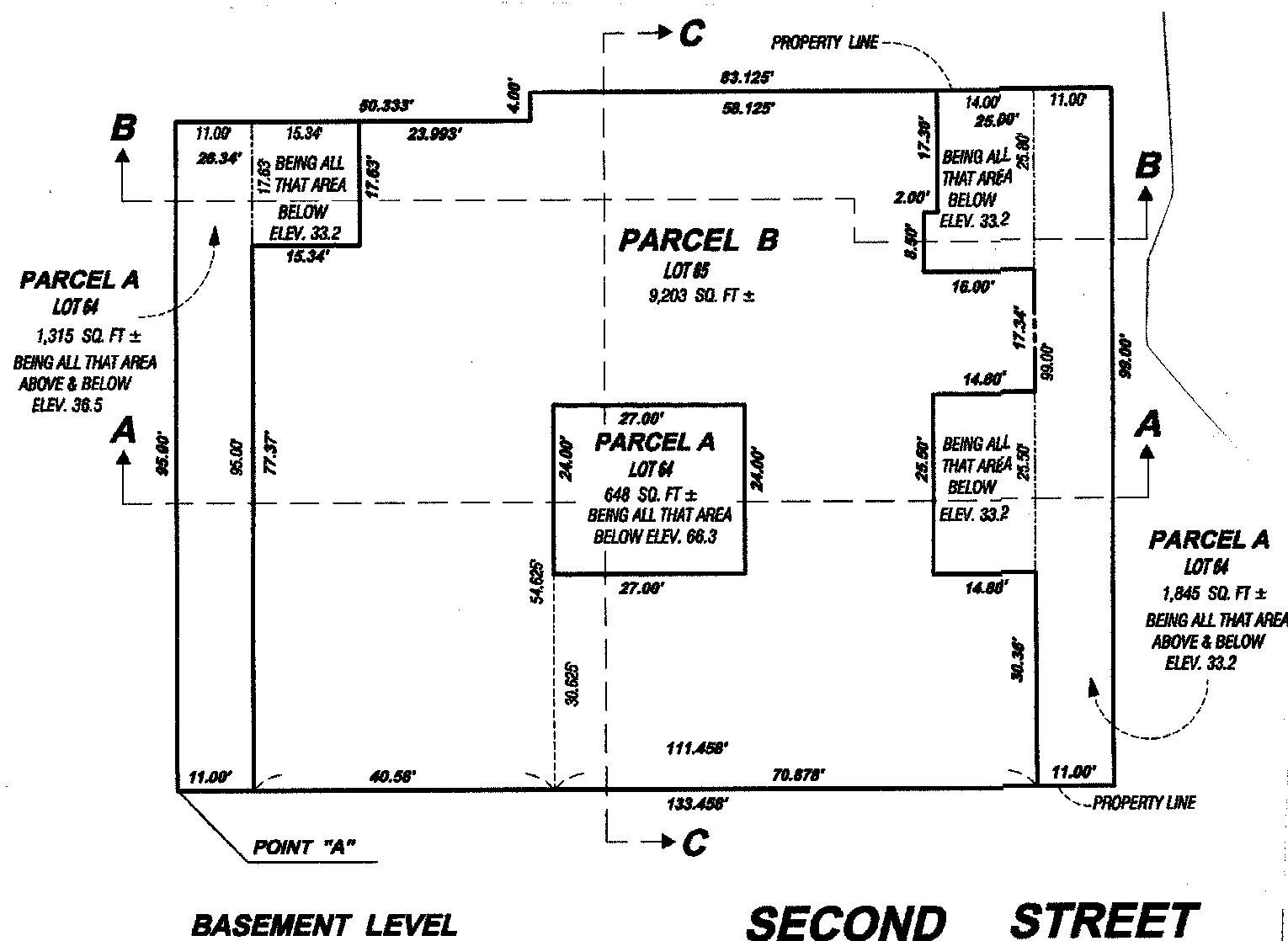
7

SHEET 1  
3735

REVISED '57  
" '76  
" '78  
" '81  
" '83  
" '86  
" '91  
Revised 2001  
Revised 2011



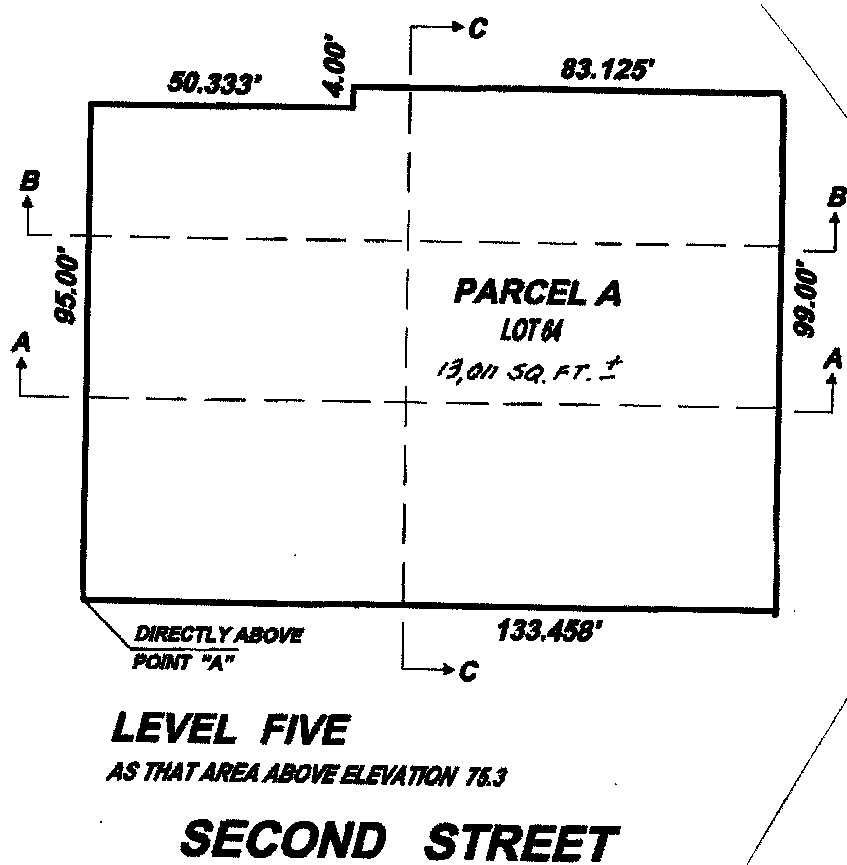
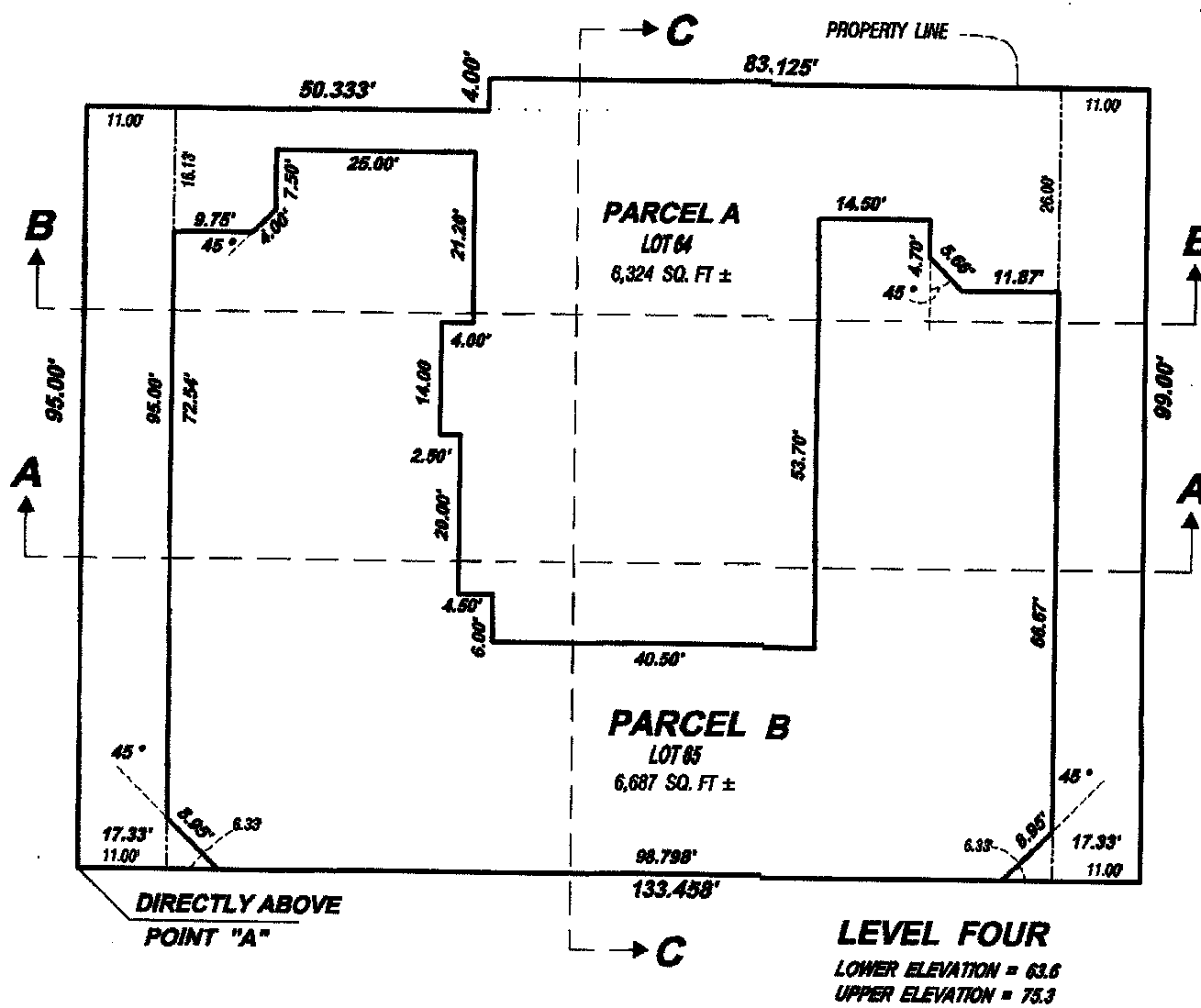
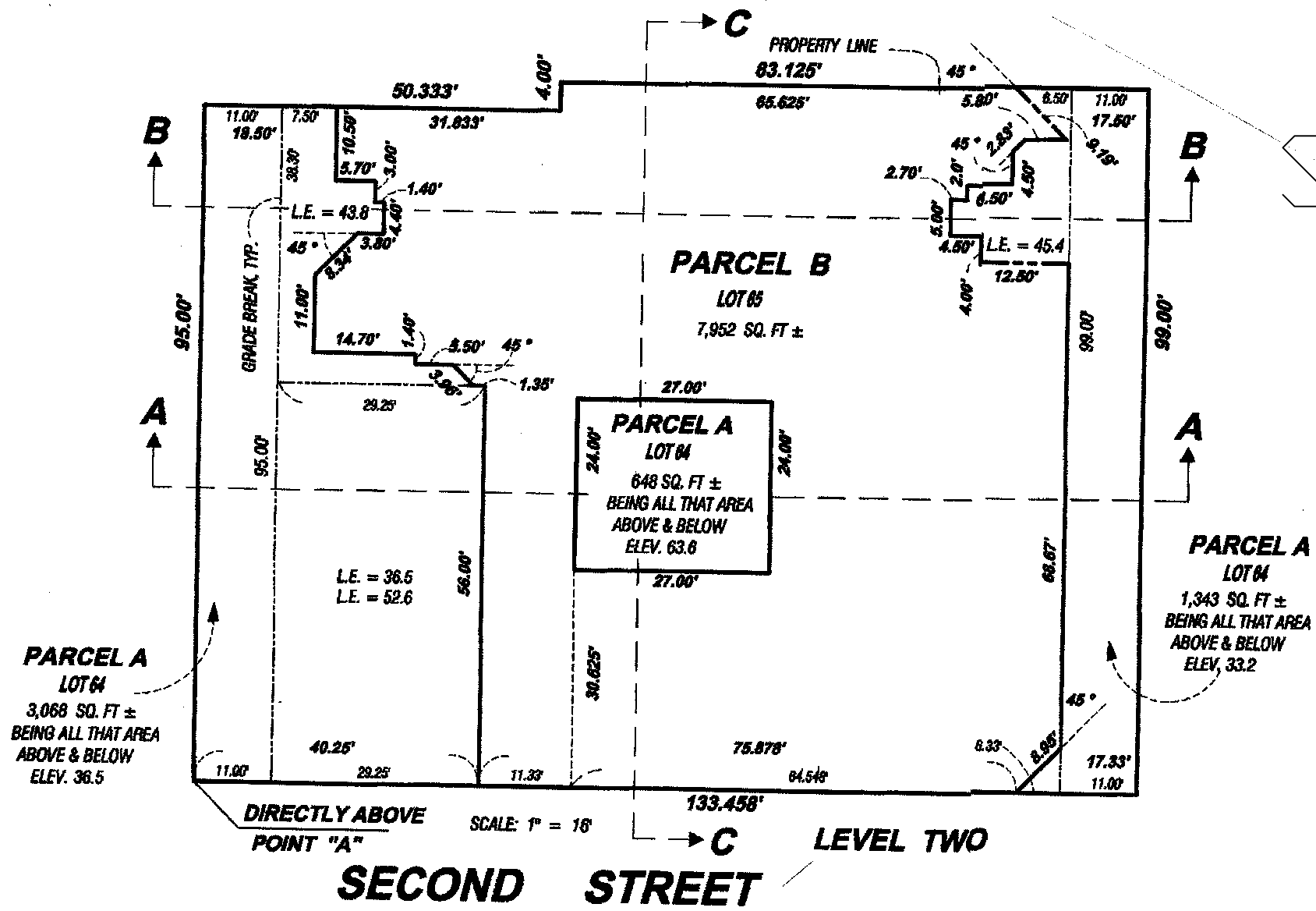
Revised 2001



3735

SHEET 3

Revised 2001



PARCEL	LOT NO.
A	64
B	65

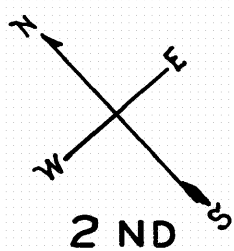
2001 Roll

**246 SECOND STREET**  
**A CONDOMINIUM**

LOT	UNIT	%COMM AREA
66	1	1/94
67	2	1/94
68	501	1/94
69	502	1/94
70	503	1/94
71	504	1/94
72	505	1/94
73	506	1/94
74	507	1/94
75	508	1/94
76	601	1/94
77	602	1/94
78	603	1/94
79	604	1/94
80	605	1/94
81	606	1/94
82	607	1/94
83	608	1/94
84	701	1/94
85	702	1/94
86	703	1/94
87	704	1/94
88	705	1/94
89	706	1/94
90	707	1/94
91	708	1/94
92	801	1/94
93	802	1/94
94	803	1/94
95	804	1/94
96	805	1/94
97	806	1/94
98	807	1/94
99	808	1/94
100	901	1/94
101	902	1/94
102	903	1/94
103	904	1/94
104	905	1/94
105	906	1/94
106	907	1/94
107	908	1/94
108	1001	1/94

LOT	UNIT	%COMM AREA
109	1002	1/94
110	1003	1/94
111	1004	1/94
112	1005	1/94
113	1006	1/94
114	1007	1/94
115	1008	1/94
116	1101	1/94
117	1102	1/94
118	1103	1/94
119	1104	1/94
120	1105	1/94
121	1106	1/94
122	1107	1/94
123	1108	1/94
124	1201	1/94
125	1202	1/94
126	1203	1/94
127	1204	1/94
128	1205	1/94
129	1206	1/94
130	1207	1/94
131	1208	1/94
132	1301	1/94
133	1302	1/94
134	1303	1/94
135	1304	1/94
136	1305	1/94
137	1306	1/94
138	1307	1/94
139	1308	1/94
140	1401	1/94
141	1402	1/94
142	1403	1/94
143	1404	1/94
144	1405	1/94
145	1406	1/94
146	1407	1/94
147	1408	1/94
148	1501	1/94
149	1502	1/94
150	1503	1/94
151	1504	1/94
152	1601	1/94
153	1602	1/94
154	1603	1/94
155	1604	1/94
156	1701	1/94
157	1702	1/94
158	1703	1/94
159	1704	1/94

Lots	merged into Lot	"43"
7	6	
11	10	
33	32	
45	17	
48	47	
51-52	5	
54	4	
<del>49</del>	47	46
2	1	
5A	5	51



Lot 29 merged into lot 28 - '27  
 Lots 43 & 44 merged into lot 41 - '40  
 Lot 3 " " " 1 - '55

3735

100 VARA BLK.356

REVISED '57

" 176

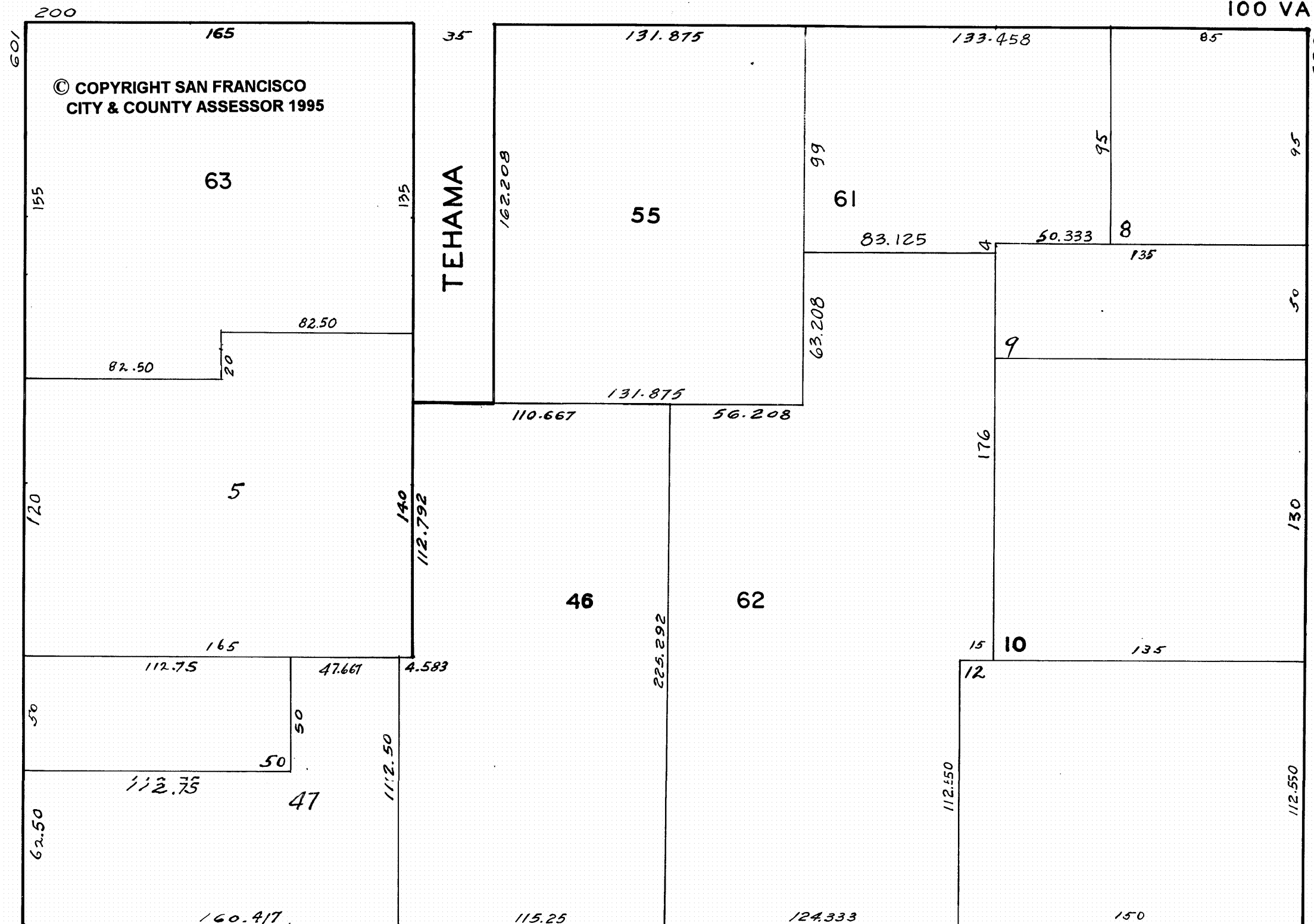
" '78

" '81  
" '83

" '83  
" '86

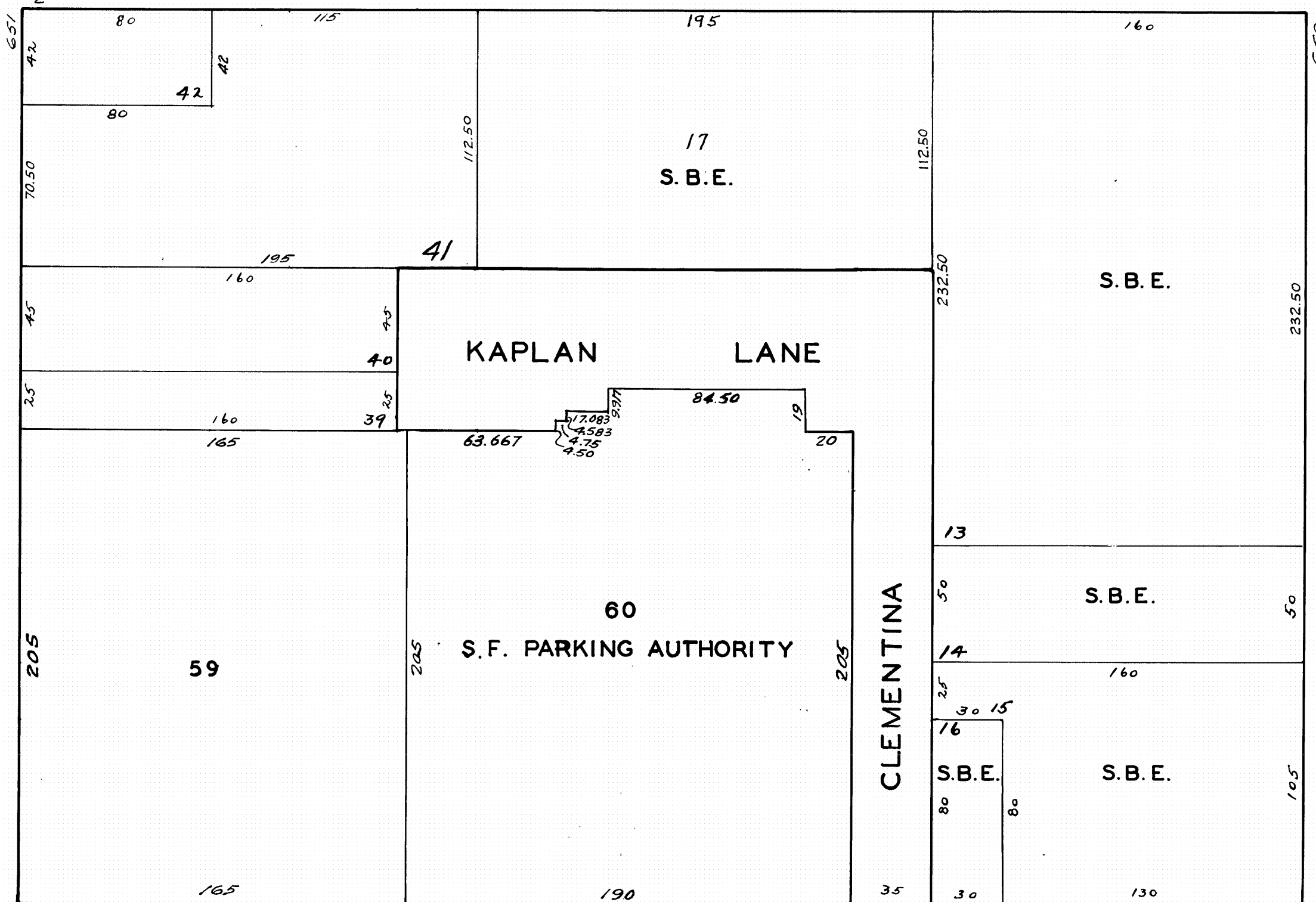
" '91

\_\_\_\_\_



HAWTHORNE

**FOLSOM**



3 RD