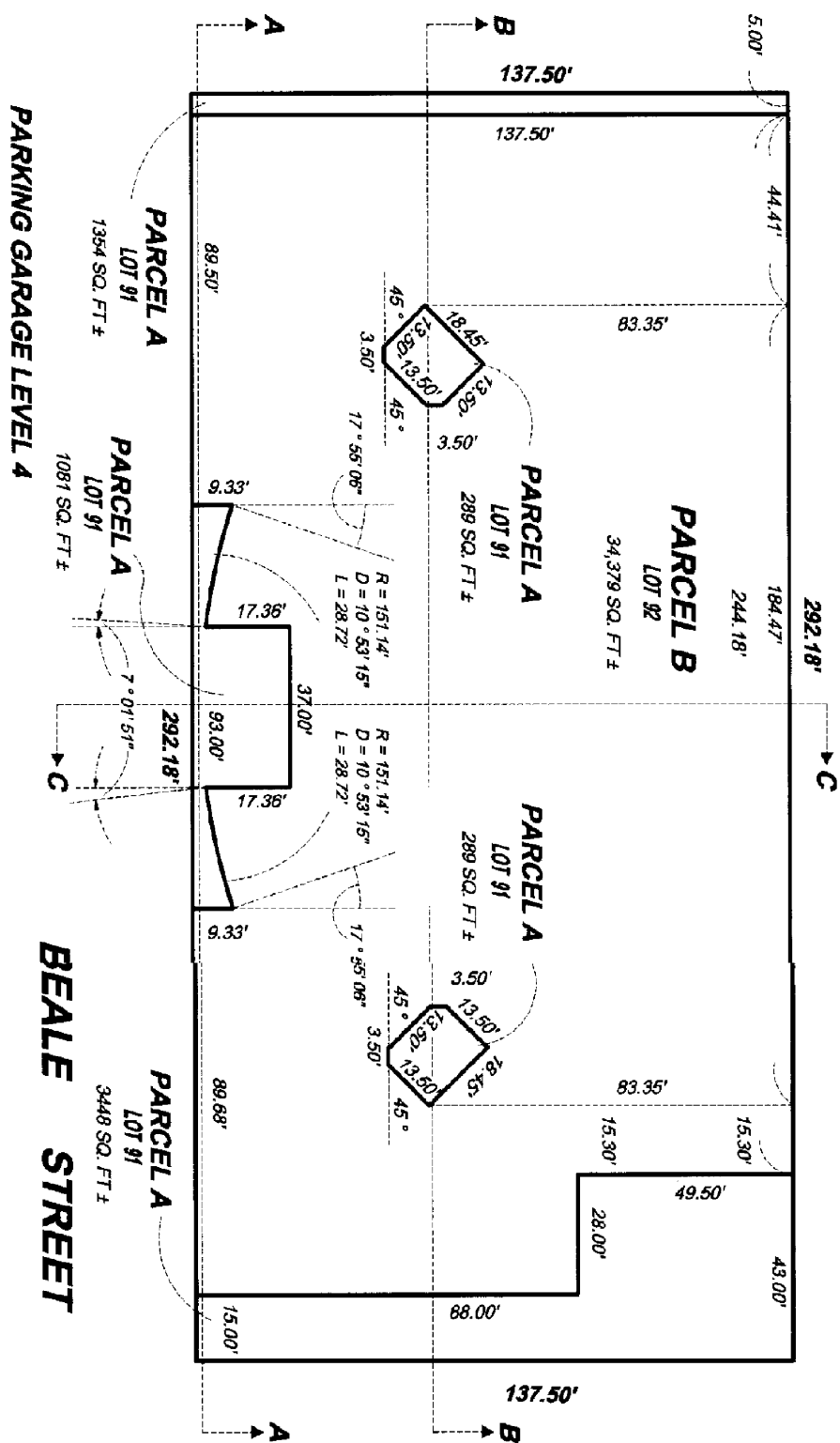
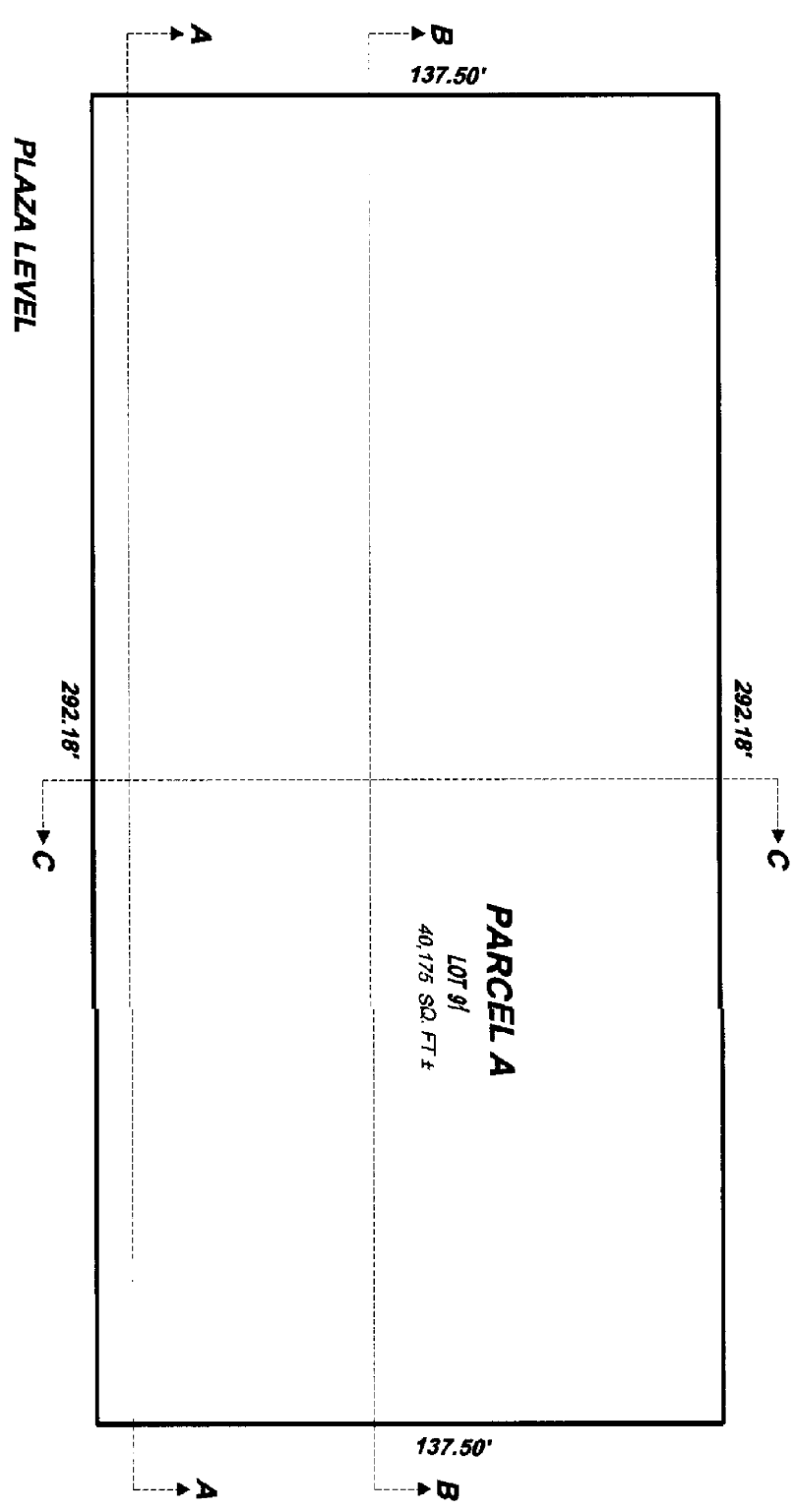
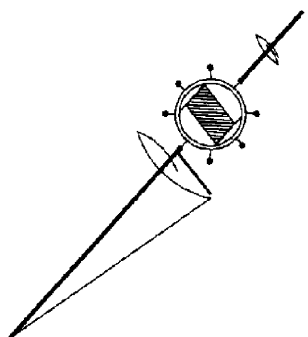


T-69-15-3

T-69-15 ⁴/₄

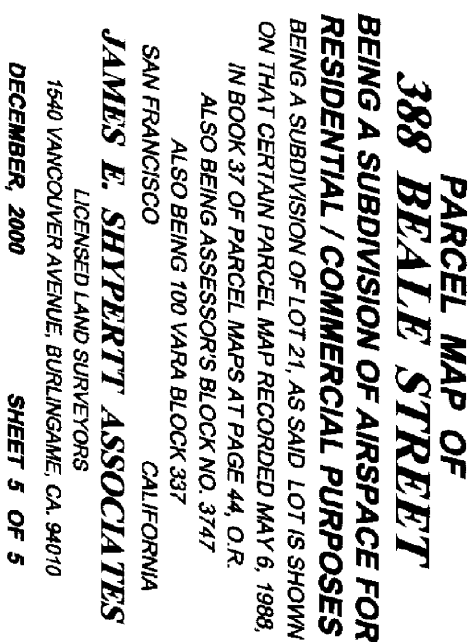
3747
sheet 4
2002roll



NOTE:
PARCEL "A" IS A RESIDENTIAL PARCEL.
PARCEL "B" IS A PARKING PARCEL.
PARCEL "C" IS A COMMERCIAL PARCEL.

PARCEL MAP OF
388 BEALE STREET
BEING A SUBDIVISION OF AIRSPACE FOR
RESIDENTIAL / COMMERCIAL PURPOSES
BEING A SUBDIVISION OF LOT 21, AS SAID LOT IS SHOWN
ON THAT CERTAIN PARCEL MAP RECORDED MAY 6, 1988,
IN BOOK 37 OF PARCEL MAPS AT PAGE 44, O.R.
ALSO BEING ASSESSOR'S BLOCK NO. 3747
ALSO BEING 100 VARA BLOCK 337
SAN FRANCISCO CALIFORNIA
JAMES E. SHYPERTT ASSOCIATES
LICENSED LAND SURVEYORS
1540 VANCOUVER AVENUE, BURLINGAME, CA. 94010
DECEMBER, 2000 SCALE: 1" = 30' SHEET 4 OF 5

3747
sheets
2002 roll



Block 3747
Sheet 6

Revised 2002

388 BEALE ST.
A CONDOMINIUM

LOT	UNIT	% COMM. AREA
94	509	0.79
95	510	0.68
96	511	0.51
97	513	0.77
98	601	0.34
99	602	0.52
100	603	0.49
101	604	0.35
102	605	0.40
103	606	0.35
104	607	0.49
105	608	0.55
106	609	0.55
107	610	0.49
108	611	0.35
109	612	0.40
110	613	0.35
111	614	0.49
112	615	0.52
113	616	0.34
114	701	0.34
115	702	0.52
116	703	0.49
117	704	0.35
118	705	0.40
119	706	0.35
120	707	0.49
121	708	0.55
122	709	0.55
123	710	0.49
124	711	0.35
125	712	0.40
126	713	0.35
127	714	0.49
128	715	0.52
129	716	0.34
130	801	0.34
131	802	0.52
132	803	0.49
133	804	0.35
134	805	0.40
135	806	0.35
136	807	0.49
137	808	0.55
138	809	0.55
139	810	0.49
140	811	0.35
141	812	0.40
142	813	0.35
143	814	0.49
144	815	0.52
145	816	0.34
146	901	0.35
147	902	0.50
148	903	0.47
149	904	0.32
150	905	0.36

LOT	UNIT	% COMM. AREA
151	906	0.32
152	907	0.49
153	908	0.53
154	909	0.53
155	910	0.49
156	911	0.32
157	912	0.36
158	913	0.32
159	914	0.47
160	915	0.50
161	916	0.35
162	1001	0.35
163	1002	0.50
164	1003	0.47
165	1004	0.32
166	1005	0.36
167	1006	0.32
168	1007	0.49
169	1008	0.53
170	1009	0.53
171	1010	0.49
172	1011	0.32
173	1012	0.36
174	1013	0.32
175	1014	0.47
176	1015	0.50
177	1016	0.35
178	1101	0.35
179	1102	0.50
180	1103	0.47
181	1104	0.32
182	1105	0.36
183	1106	0.32
184	1107	0.49
185	1108	0.53
186	1109	0.53
187	1110	0.49
188	1111	0.32
189	1112	0.36
190	1113	0.32
191	1114	0.47
192	1115	0.50
193	1116	0.35
194	1201	0.35
195	1202	0.50
196	1203	0.47
197	1204	0.32
198	1205	0.36
199	1206	0.32
200	1207	0.49
201	1208	0.53
202	1209	0.53
203	1210	0.49
204	1211	0.32
205	1212	0.36
206	1213	0.32
207	1214	0.47

LOT	UNIT	% COMM. AREA
208	1215	0.50
209	1216	0.35
210	1301	0.35
211	1302	0.50
212	1303	0.47
213	1304	0.32
214	1305	0.36
215	1306	0.32
216	1307	0.49
217	1308	0.53
218	1309	0.53
219	1310	0.49
220	1311	0.32
221	1312	0.36
222	1313	0.32
223	1314	0.47
224	1315	0.50
225	1316	0.35
226	1401	0.35
227	1402	0.50
228	1403	0.47
229	1404	0.32
230	1405	0.36
231	1406	0.32
232	1407	0.49
233	1408	0.53
234	1409	0.53
235	1410	0.49
236	1411	0.32
237	1412	0.36
238	1413	0.32
239	1414	0.47
240	1415	0.50
241	1416	0.35
242	1501	0.35
243	1502	0.50
244	1503	0.47
245	1504	0.32
246	1505	0.36
247	1506	0.32
248	1507	0.49
249	1508	0.53
250	1509	0.53
251	1510	0.49
252	1511	0.32
253	1512	0.36
254	1513	0.32
255	1514	0.47
256	1515	0.50
257	1516	0.35
258	1601	0.35
259	1602	0.50
260	1603	0.47
261	1604	0.32
262	1605	0.36
263	1606	0.32
264	1607	0.49

LOT	UNIT	% COMM. AREA
265	1608	0.53
266	1609	0.53
267	1610	0.49
268	1611	0.32
269	1612	0.36
270	1613	0.32
271	1614	0.47
272	1615	0.50
273	1616	0.35
274	1701	0.35
275	1702	0.50
276	1703	0.47
277	1704	0.32
278	1705	0.36
279	1706	0.32
280	1707	0.49
281	1708	0.53
282	1709	0.53
283	1710	0.49
284	1711	0.32
285	1712	0.36
286	1713	0.32
287	1714	0.47
288	1715	0.50
289	1716	0.35
290	1801	0.68
291	1802	0.50
292	1803	0.34
293	1804	0.50
294	1805	0.68
295	1806	0.68
296	1807	0.50
297	1808	0.34
298	1809	0.50
299	1810	0.68
300	1901	0.68
301	1902	0.50
302	1903	0.34
303	1904	0.50
304	1905	0.68
305	1906	0.68
306	1907	0.50
307	1908	0.34
308	1909	0.50
309	1910	0.68
310	2001	0.68
311	2002	0.50
312	2003	0.34
313	2004	0.50
314	2005	0.68
315	2006	0.68
316	2007	0.50
317	2008	0.34
318	2009	0.50
319	2010	0.68

Block 3747
Sheet 2

3747

100 VARA BLK.337

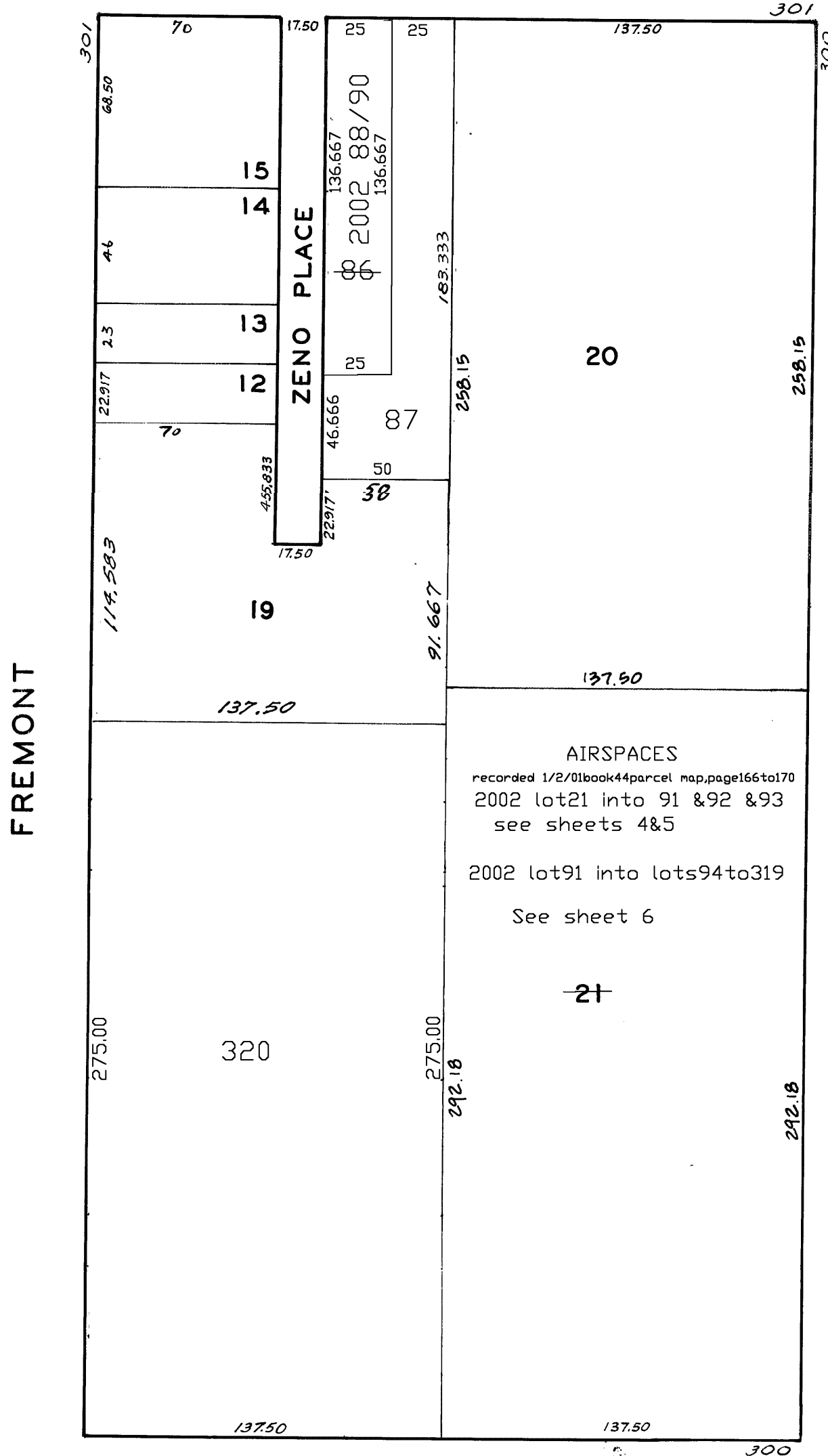
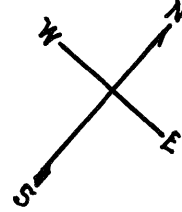
REVISED '62
" '82
" '89

Revised 2001
Revised 2002
Revised 2008

Lots 4 and 5 Merged into Lot 3-43
" 7 and 8 " " 6-43
" 11 and 16 " " 10-43
" 18 " " 17-43
" 1C + 1F " " 1B "44"
" 1A " " 17 "52"

lot17 into lots86 & 87 for 2001 roll
lot86 into lots88/90 for 2002 roll
lot91 into lots94to319 for 2002 roll
lots1E,2,&6 Into lot320 for 2008 roll

FOLSOM



345 FOLSOM ST. A CONDOMINIUM		
LOT	UNIT	% COMM. AREA
88	C-1	8.82
89	201	29.75
90	301	61.43

HARRISON