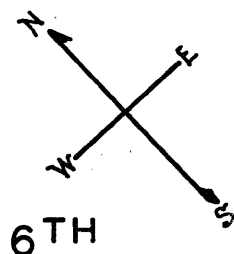


LOTS 14,14A Merged into Lot 13 - "1939"  
Lot 11,12 Merged into Lot 10 - "41"  
" 17A,23-24-25 Merged into lot 22 - "43"  
" 32 " " " 31 - "43"  
" 33 " " " 30 - "43"  
" 36-37 " " " 35 - "43"  
" 19-20-21 " " " 18 - "43"  
" 44 " " " 43 - "43"  
" 4 " " " 3 - "52"



lot6 into lots68to77 for 1998 roll  
lot8 into lots78/96 for 2002 roll  
lot3 into lots97to111 for 2003 roll  
lot5 into lots112to120 for 2007 roll  
Lots 45A-46A-47 Merged into Lot 46 - "43"  
" 51-52-53-54-55-56 " " " 50 - "43"  
" 9 " " " 8 - "43"

© COPYRIGHT SAN FRANCISCO  
CITY & COUNTY ASSESSOR 1995

100 VARA BLK.396

3754

REVISED	'60
REVISED	'64
"	'69
"	'70

Revised 1998  
Revised 2002  
Revised 2003  
Revised 2007

360 6TH ST.  
A CONDOMINIUM

LOT	UNIT	% COMM.	AREA
78	1	4.55	
79	2	8.44	
80	3	4.92	
81	4	5.17	
82	5	5.42	
83	6	5.42	
84	7	5.42	
85	8	5.13	
86	9	5.14	
87	10	5.14	
88	11	4.89	
89	12	5.16	
90	13	5.04	
91	14	5.04	
92	15	5.04	
93	16	4.82	
94	17	5.14	
95	18	5.14	
96	19	4.98	

334 6TH ST.  
A CONDOMINIUM

LOT	UNIT	% COMM.	AREA
112	COMML	5.28	
113	1	12.78	
114	2	11.00	
115	3	11.42	
116	4	13.18	
117	5	11.37	
118	6	11.80	
119	7	11.37	
120	8	11.80	

322 6TH ST.

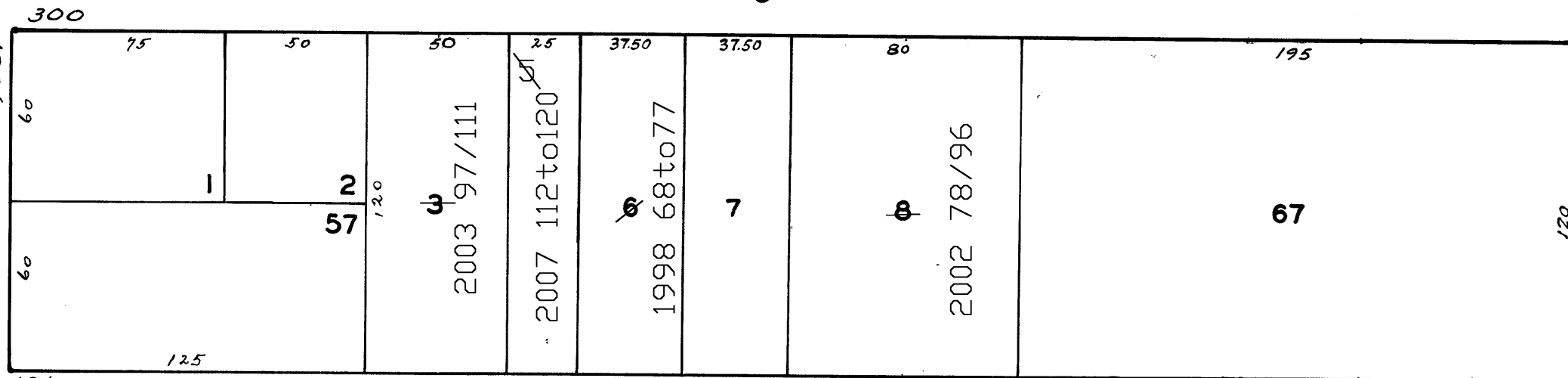
A CONDOMINIUM

LOT	UNIT	% COMM.	AREA
97	1	6.40	
98	2	5.25	
99	3	4.10	
100	4	8.60	
101	5	10.91	
102	6	10.06	
103	7	6.45	
104	8	6.45	
105	9	5.71	
106	10	6.45	
107	11	6.45	
108	12	5.71	
109	13	5.11	
110	14	6.45	
111	15	5.90	

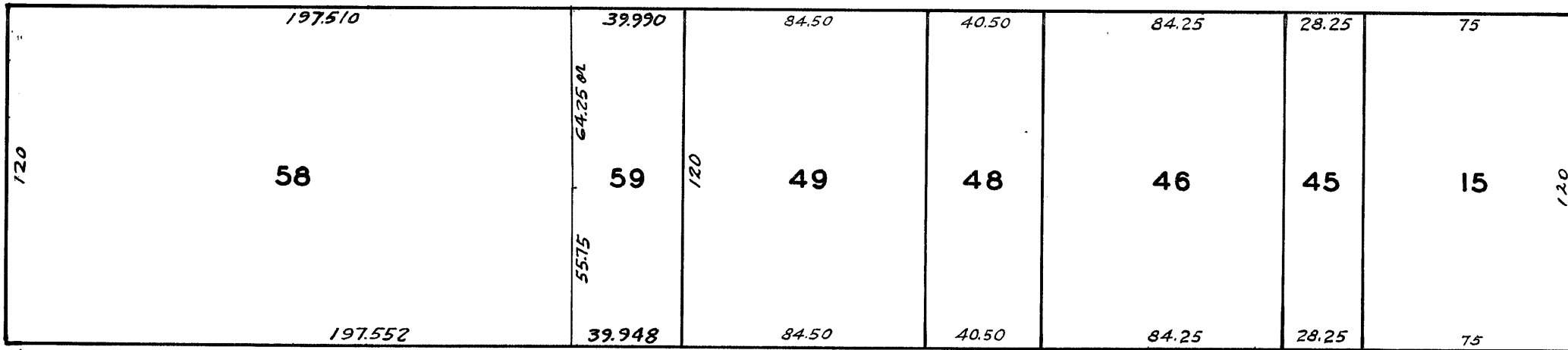
340 6TH ST.

A CONDOMINIUM

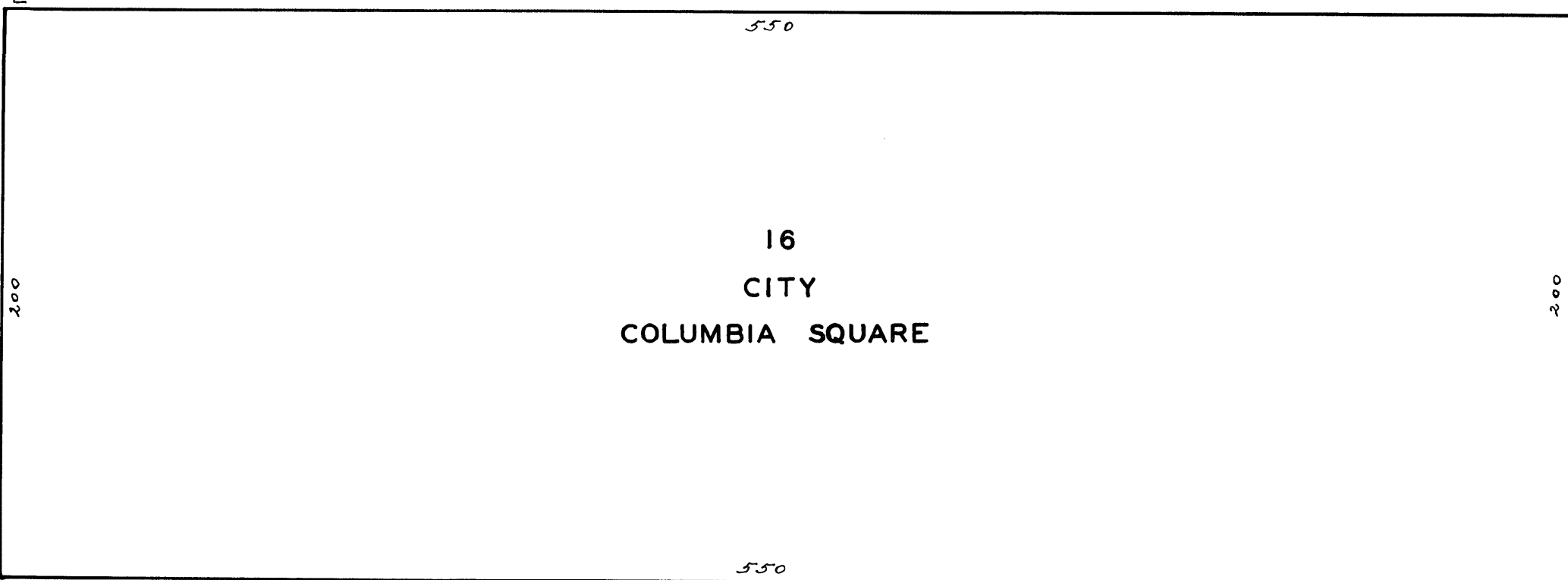
LOT	UNIT	% COMM.	AREA
68	101	4.63	
69	102	4.81	
70	103	9.61	
71	104	9.49	
72	105	10.84	
73	106	11.68	
74	301	12.04	
75	302	10.92	
76	303	15.34	
77	304	10.64	



HARRIET

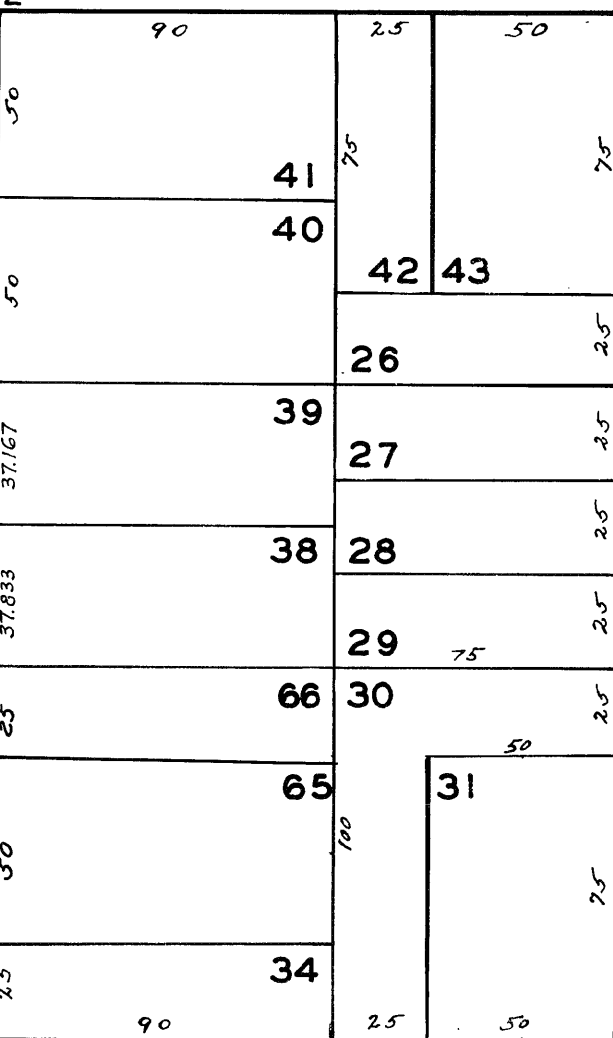


COLUMBIA SQUARE

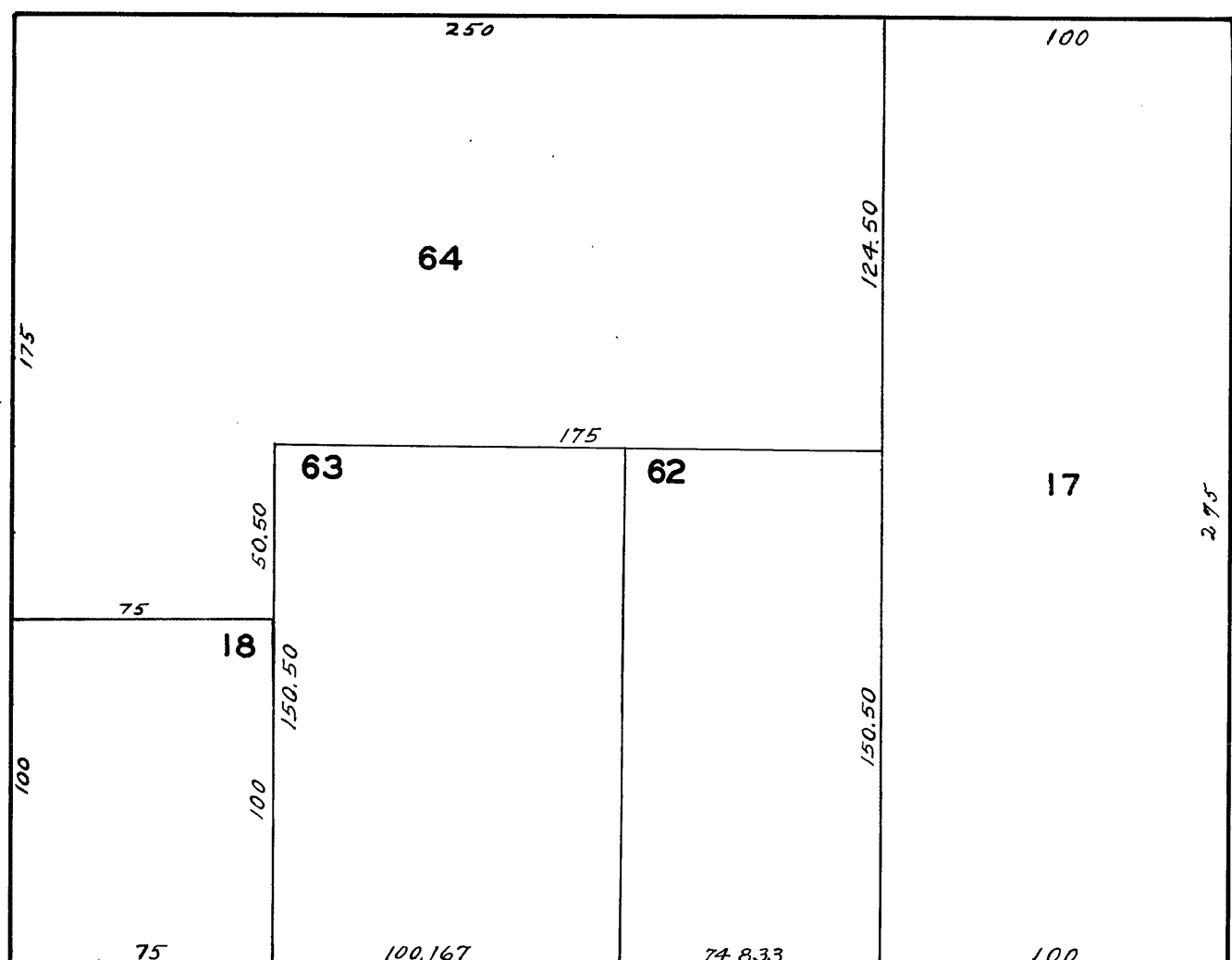


CITY  
COLUMBIA SQUARE

SHERMAN



CLEVELAND



7TH