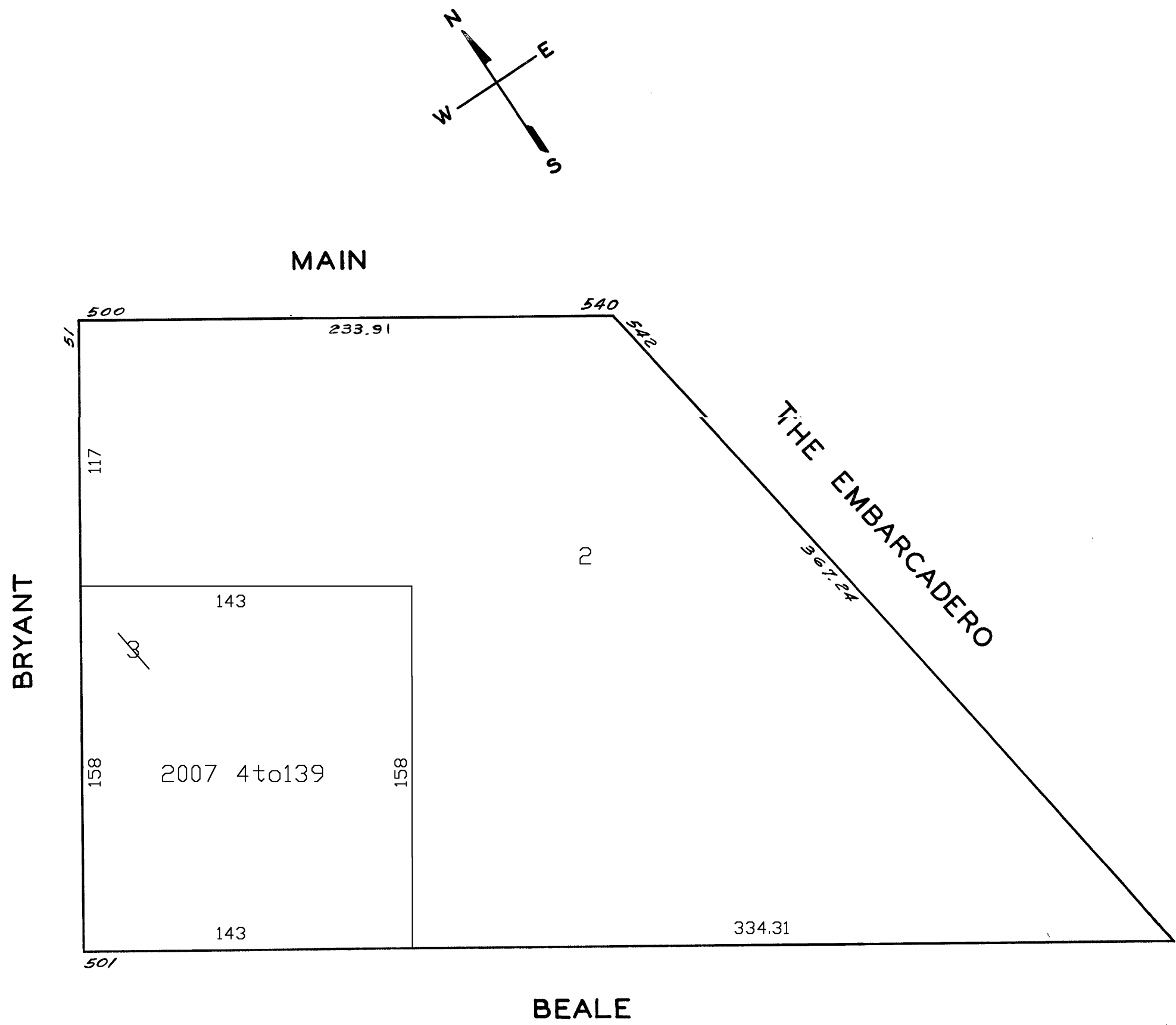


© COPYRIGHT SAN FRANCISCO
CITY & COUNTY ASSESSOR 1995
lot1 into lots2&3 for 2005 roll
lot3 into lots4to139 for 2007 roll

3771
SO. BEACH BLK.20
Revised 2005
Revised 2007



BRYANT ST. RESIDENTIAL TOWER
A CONDOMINIUM
LOT UNIT % COMM. AREA
4to139 1AtoPH1E .7353