

| Lot | 0 | Merged into | Lot | 0 |
|-----|----------|-------------|-----|----|
| " | 10 | " | " | 13 |
| " | 14-41 | " | " | 18 |
| " | 19 | " | " | 23 |
| " | 24 | " | " | 28 |
| " | 34-35 | " | " | 42 |
| " | 43-44-45 | " | " | 50 |
| " | 51-52 | " | " | 77 |
| " | 74 | " | " | |

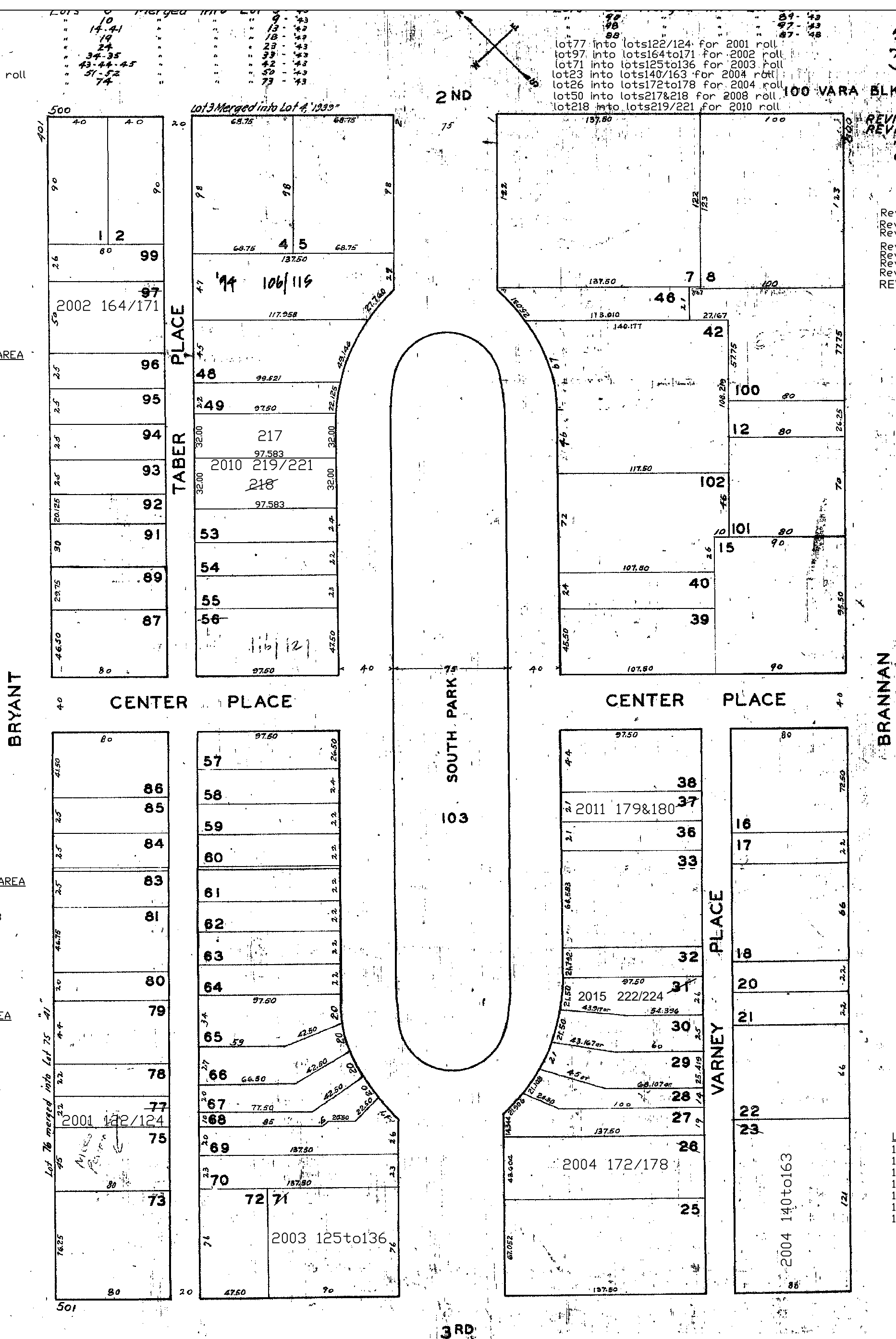
lot77 into lots122/124 for 2001 roll
lot97 into lots164to171 for 2002 roll
lot91 into lots125to136 for 2003 roll
lot23 into lots140/163 for 2004 roll
lot26 into lots172to178 for 2004 roll
lot50 into lots217&218 for 2008 roll
lot218 into lots219/221 for 2010 roll

REVISED 65
REVISED 63
65
44
96
Revised 2001
Revised 2002
Revised 2003
Revised 2004
Revised 2008
Revised 2010
Revised 2011
REVISED 2015

| 188 SOUTH PARK AVE. | | |
|---------------------|------|--------------|
| A CONDOMINIUM | | |
| LOT | UNIT | % COMM. AREA |
| 125 | 1 | 8.18 |
| 126 | 2 | 7.80 |
| 127 | 3 | 9.32 |
| 128 | 4 | 9.74 |
| 129 | 5 | 8.33 |
| 130 | 6 | 8.60 |
| 131 | 7 | 8.94 |
| 132 | 8 | 6.32 |
| 133 | 9 | 6.49 |
| 134 | 10 | 8.72 |
| 135 | 11 | 8.43 |
| 136 | 12 | 9.13 |

| 599 3RD ST. | | | |
|---------------|------|---------|------|
| A CONDOMINIUM | | | |
| LOT | UNIT | % COMM. | AREA |
| 140 | 101 | 5.56 | |
| 141 | 102 | 3.59 | |
| 142 | 103 | 3.61 | |
| 143 | 104 | 5.71 | |
| 144 | 201 | 4.10 | |
| 145 | 202 | 2.47 | |
| 146 | 203 | 2.86 | |
| 147 | 204 | 4.97 | |
| 148 | 205 | 6.58 | |
| 149 | 206 | 2.82 | |
| 150 | 207 | 2.25 | |
| 151 | 208 | 6.76 | |
| 152 | 209 | 4.89 | |
| 153 | 210 | 3.81 | |
| 154 | 211 | 5.02 | |
| 155 | 301 | 6.76 | |
| 156 | 302 | 2.84 | |
| 157 | 303 | 2.88 | |
| 158 | 304 | 5.93 | |
| 159 | 305 | 2.27 | |
| 160 | 306 | 2.85 | |
| 161 | 307 | 2.83 | |
| 162 | 308 | 3.81 | |
| 163 | 309 | 4.83 | |

| <u>181 SOUTH PARK</u> | | |
|-----------------------|-------------|---------------------|
| <u>A CONDOMINIUM</u> | | |
| <u>LOT</u> | <u>UNIT</u> | <u>% COMM. AREA</u> |
| 172 | 1 | 25.361 |
| 173 | 2 | 41.519 |
| 174 | 3 | 5.089 |
| 175 | 4 | 7.764 |
| 176 | 5 | 5.667 |
| 177 | 6 | 6.230 |
| 178 | 7 | 8.370 |



| <u>10 SOUTH PARK AVE</u> | | |
|--------------------------|-------------|---------------------|
| <u>A CONDOMINIUM</u> | | |
| <u>LOT</u> | <u>UNIT</u> | <u>% COMM. AREA</u> |
| 106 | 1 | 10 |
| 107 | 2 | |
| 108 | 3 | |
| 109 | 4 | |
| 110 | 5 | |
| 111 | 6 | |
| 112 | 7 | |
| 113 | 8 | |
| 114 | 9 | |
| 115 | 10 | 10 |

| <u>86 SOUTH PARK</u> | | |
|----------------------|-------------|--------------------|
| <u>A CONDOMINIUM</u> | | |
| <u>LOT</u> | <u>UNIT</u> | <u>%COMM. AREA</u> |
| 116 | A | 12.46 |
| 117 | B | 12.84 |
| 118 | C | 23.81 |
| 119 | D | 23.34 |
| 120 | E | 20.11 |
| 121 | F | 7.44 |

lot37 into lots 179&180 for 2011 roll

| 415 BRYANT ST. A CONDOMINIUM | | |
|---------------------------------|------|--------------|
| LOT | UNIT | % COMM. AREA |
| 164 | 1 | 9.65 |
| 165 | 2 | 11.47 |
| 166 | 3 | 9.05 |
| 167 | 4 | 9.05 |
| 168 | 5 | 15.54 |
| 169 | 6 | 15.54 |
| 170 | 7 | 14.85 |
| 171 | 8 | 14.85 |

| 188 SOUTH PARK AVE. A CONDOMINIUM | | |
|--------------------------------------|------|--------------|
| LOT | UNIT | % COMM. AREA |
| 125 | 1 | 8.18 |
| 126 | 2 | 7.80 |
| 127 | 3 | 9.32 |
| 128 | 4 | 9.74 |
| 129 | 5 | 8.33 |
| 130 | 6 | 8.60 |
| 131 | 7 | 8.94 |
| 132 | 8 | 6.32 |
| 133 | 9 | 6.49 |
| 134 | 10 | 8.72 |
| 135 | 11 | 8.43 |
| 136 | 12 | 9.13 |

| 485 BRYANT ST. A CONDOMINIUM | | |
|---------------------------------|------|--------------|
| LOT | UNIT | % COMM. AREA |
| 122 | 1 | 29.51 |
| 123 | 2 | 32.16 |
| 124 | 3 | 38.33 |

| 599 3RD ST. A CONDOMINIUM | | |
|------------------------------|------|--------------|
| LOT | UNIT | % COMM. AREA |
| 140 | 101 | 5.56 |
| 141 | 102 | 3.59 |
| 142 | 103 | 3.61 |
| 143 | 104 | 5.71 |
| 144 | 201 | 4.10 |
| 145 | 202 | 2.47 |
| 146 | 203 | 2.86 |
| 147 | 204 | 4.97 |
| 148 | 205 | 6.58 |
| 149 | 206 | 2.82 |
| 150 | 207 | 2.25 |
| 151 | 208 | 6.76 |
| 152 | 209 | 4.89 |
| 153 | 210 | 3.81 |
| 154 | 211 | 5.02 |
| 155 | 301 | 6.76 |
| 156 | 302 | 2.84 |
| 157 | 303 | 2.88 |
| 158 | 304 | 5.93 |
| 159 | 305 | 2.27 |
| 160 | 306 | 2.85 |
| 161 | 307 | 2.83 |
| 162 | 308 | 3.81 |
| 163 | 309 | 4.83 |

SHEET
3775

lot77 into lots122/124 for 2001 roll
lot97 into lots164to171 for 2002 roll
lot71 into lots125to136 for 2003 roll
lot23 into lots140/163 for 2004 roll
lot26 into lots172to178 for 2004 roll
lot50 into lots217&218 for 2008 roll
lot218 into lots219/221 for 2010 roll

REVISED 2001
REVISED 2002
REVISED 2003
REVISED 2004
REVISED 2008
REVISED 2010
REVISED 2011

BRYANT

CENTER PLACE

SOUTH PARK

CENTER PLACE

BRANNAN

VARNEY PLACE

| 181 SOUTH PARK A CONDOMINIUM | | |
|---------------------------------|------|--------------|
| LOT | UNIT | % COMM. AREA |
| 172 | 1 | 25.361 |
| 173 | 2 | 41.519 |
| 174 | 3 | 5.089 |
| 175 | 4 | 7.764 |
| 176 | 5 | 5.667 |
| 177 | 6 | 6.230 |
| 178 | 7 | 8.370 |