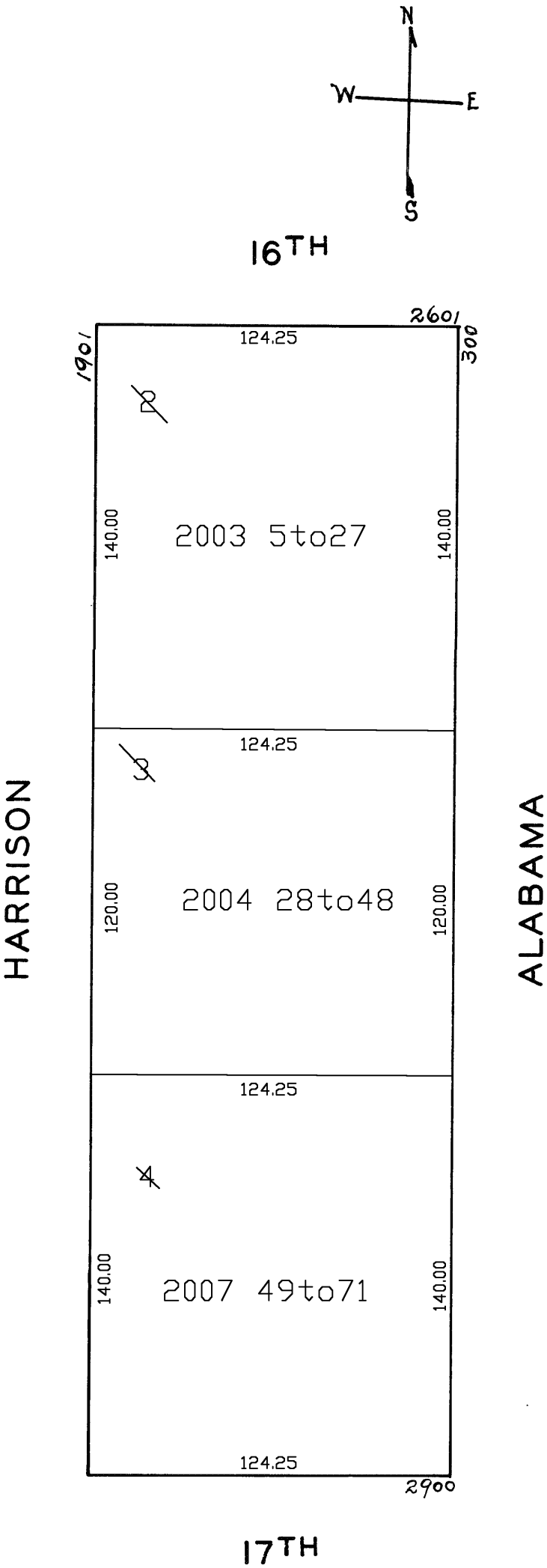


© COPYRIGHT SAN FRANCISCO  
CITY & COUNTY ASSESSOR 1995  
lot1 into lots2to4 for 2002 roll  
lot2 into lots5to27 for 2003 roll  
lot3 into lots28to48 for 2004 roll  
lot4 into lots49to71 for 2007 roll

3967  
NEW POTRERO BLK. 8  
Revised 2002  
Revised 2003  
Revised 2004  
Revised 2007



350 ALABAMA ST. A CONDOMINIUM		
UNIT	% COMM.	AREA
COMML	5.38	
1	4.99	
2	3.91	
3	4.42	
4	4.39	
5	4.39	
6	3.17	
7	6.86	
8	7.79	
9	5.74	
10	6.24	
11	6.24	
12	3.44	
14	4.42	
15	4.39	
16	4.39	
17	3.07	
18	2.28	
19	4.50	
20	4.50	
21	5.49	

320 ALABAMA ST. A CONDOMINIUM		
LOT	UNIT	% COMM. AREA
5	COMML	6.86
6	1	6.10
7	2	6.12
8	3	5.15
9	4	3.36
10	5	3.47
11	6	3.47
12	7	3.47
13	8	2.62
14	9	6.00
15	10	7.33
16	11	4.78
17	12	4.78
18	14	3.24
19	15	3.47
20	16	3.47
21	17	3.47
22	18	2.56
23	19	5.63
24	20	4.22
25	21	3.30
26	22	3.30
27	23	3.83

380 ALABAMA ST. A CONDOMINIUM		
LOT	UNIT	% COMM. AREA
49	COMML	6.84
50	1	6.27
51	2	6.31
52	3	5.07
53	4	3.35
54	5	3.44
55	6	3.44
56	7	3.44
57	8	2.58
58	9	6.00
59	10	6.40
60	11	4.78
61	12	5.25
62	14	3.27
63	15	3.44
64	16	3.44
65	17	3.44
66	18	2.47
67	19	5.83
68	20	3.26
69	21	3.27
70	22	4.16
71	23	4.25