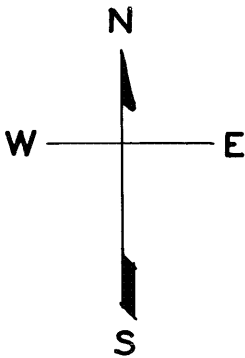


LOTS MERGED

LOTS 4/6 - 8/13 INTO LOT 3 - 1946

lots 1&2&16 into lots 22 to 25 for 1994 roll  
lot 21 into lots 26 to 29 for 1997 roll  
lot 14 into lots 30 to 33 for 1998 roll  
lot 27 into lots 49 to 52 for 1998 roll  
lot 17 into lots 35 to 44 for 1999 roll  
lot24 into lots105to124 for 2000 roll  
lot25 into lots89to104 for 2000 roll  
lot26 into lots45to48 for 2002 roll  
lot34 into lots73to88 for 2002 roll  
lots28&29 into lot34 for 2002 roll  
lot19 into lots57to72 for 2002 roll  
lot23 into lots125to162 for 2003 roll



REVISED 1992

// 193  
" 94  
Revised 1997  
Revised 1998  
Revised 1999  
Revised 2000  
Revised 2002  
Revised 2003

NEW POTRERO BLK. 388

MARIPOSA

615 TENNESSEE ST.  
A CONDOMINIUM

LOT	UNIT	% COMM. AREA
30	101	24.16
31	102	27.04
32	103	24.16
33	104	24.64

2080 THIRD ST.  
A CONDOMINIUM

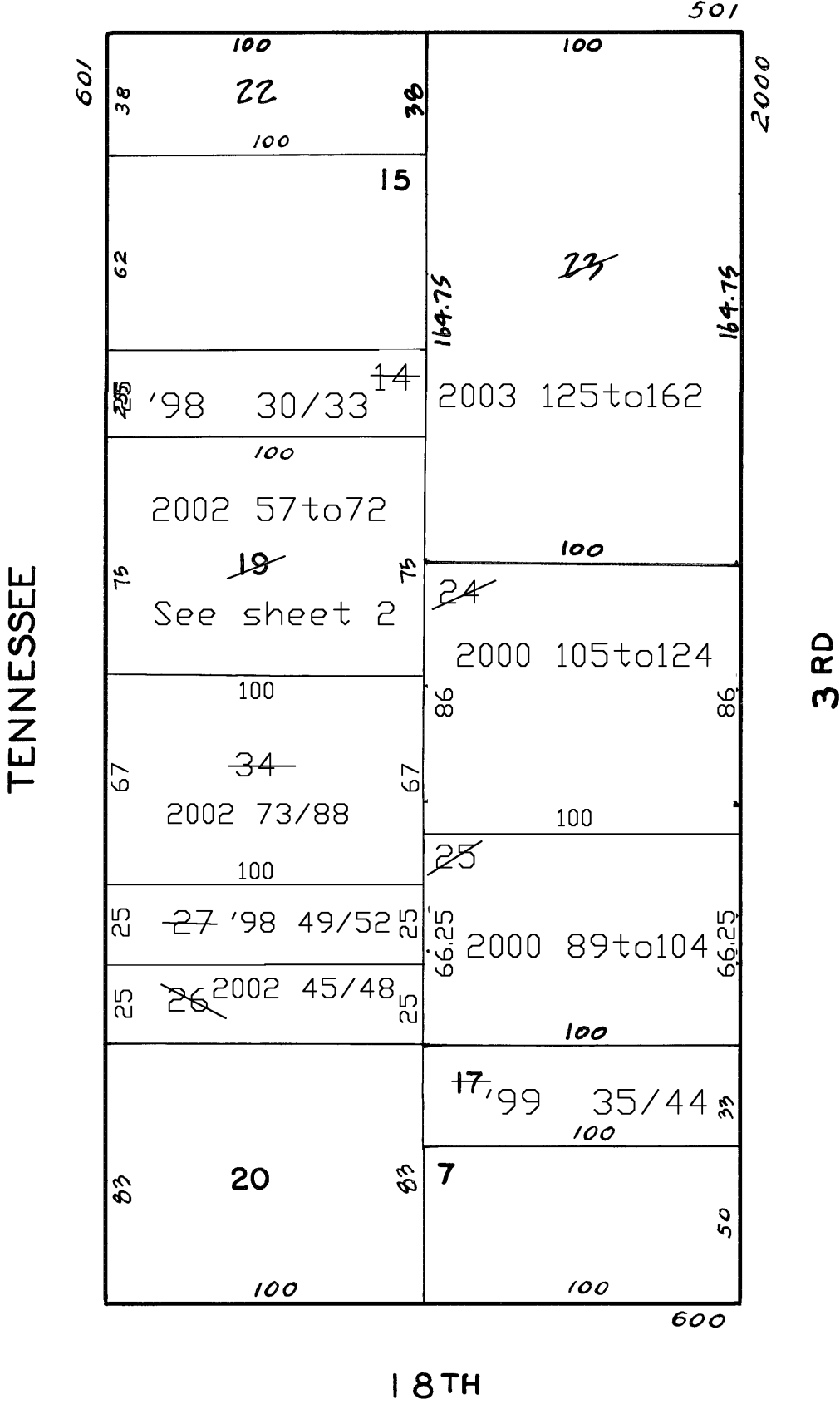
LOT	UNIT	% COMM. AREA
35	1	15.90
36	2	8.15
37	3	9.36
38	4	9.33
39	5	9.17
40	6	15.40
41	7	9.01
42	8	8.51
43	9	6.83
44	10	8.34

675 TENNESSEE ST.  
A CONDOMINIUM

LOT	UNIT	% COMM. AREA
49	A	23.19
50	B	30.11
51	C	23.19
52	D	23.51

2068 3RD ST.  
A CONDOMINIUM

LOT	UNIT	% COMM. AREA
89	1	5.761
90	2	4.335
91	3	4.871
92	4	4.899
93	5	4.871
94	6	4.899
95	7	3.861
96	8	4.899
97	9	7.266
98	10	7.420
99	11	8.641
100	12	8.418
101	14	8.418
102	15	8.641
103	16	8.418
104	17	4.380



685 TENNESSEE ST.  
A CONDOMINIUM

LOT	UNIT	% COMM. AREA
45	101	22.85
46	102	31.18
47	201	22.85
48	202	23.12

655 TENNESSEE ST.  
A CONDOMINIUM

LOT	UNIT	% COMM. AREA
73	101	5.434
74	102	4.697
75	103	4.719
76	104	4.681
77	105	4.719
78	106	4.746
79	107	5.526
80	108	4.697
81	201	6.972
82	202	7.546
83	203	8.294
84	204	7.530
85	205	8.294
86	206	7.628
87	207	6.972
88	208	7.546

2030 3RD ST.  
A CONDOMINIUM

LOT	UNIT	% COMM. AREA
105	1	2.65
106	2	3.28
107	3	5.19
108	4	3.72
109	5	3.83
110	6	3.72
111	7	5.07
112	8	3.72
113	9	4.46
114	10	3.73
115	11	5.08
116	12	5.54
117	13	6.52
118	14	6.32
119	15	6.52
120	16	6.00
121	17	6.52
122	18	6.25
123	19	5.63
124	20	6.25