

LOTS MERGED

lots 16/17 into lot 15 1946

lot45 into lots46&47 for 2003 roll  
lot43 into lots48&49 for 2004 roll  
lot44 into lots50&51 for 2004 roll  
lot27 into lots41&42 for 2004 roll  
lot26 into lots43&45 for 2003 roll  
lot1B into lots39&40 for 2005 roll  
lot6 into lots52&53 for 2008 roll

© COPYRIGHT SAN FRANCISCO  
CITY & COUNTY ASSESSOR 1995

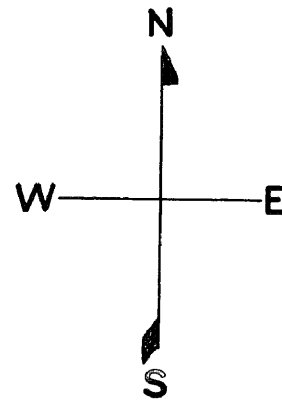
4031

NEW POTRERO BLK. 162

REVISED '57  
REVISED '64

" '65  
" '66  
" '68  
" '69  
" '81  
" '95

Revised 2004  
Revised 2005  
Revised 2008



18TH

698 DE HARO ST. A CONDOMINIUM			
LOT	UNIT	% COMM. AREA	
41	698A	50	
42	698B	50	

694 DE HARO ST. A CONDOMINIUM			
LOT	UNIT	% COMM. AREA	
50	694A	50	
51	694B	50	

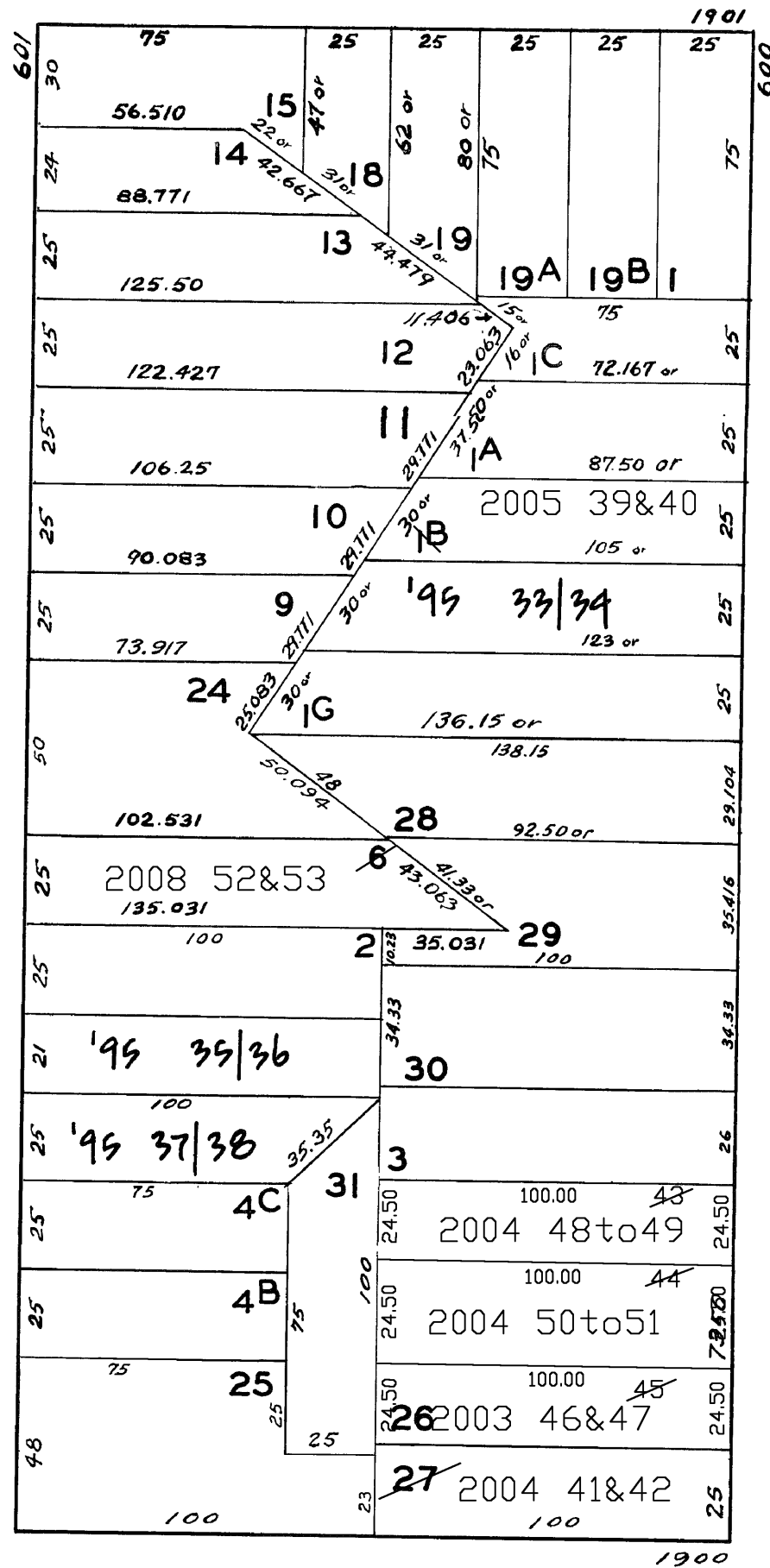
692 DE HARO ST. A CONDOMINIUM			
LOT	UNIT	% COMM. AREA	
48	692A	50	
49	692B	50	

696 DE HARO ST. A CONDOMINIUM			
LOT	UNIT	% COMM. AREA	
46	696A	50	
47	696B	50	

630-632 DE HARO ST. A CONDOMINIUM			
LOT	UNIT	% COMM. AREA	
39	630	49.20	
40	632	50.80	

RHODE ISLAND

DE HARO



19TH

638-640 DE HARO ST. A CONDOMINIUM			
LOT	UNIT	% COMM. AREA	
33	638	50	
34	640	50	

669-671 RHODE ISLAND ST. A CONDOMINIUM			
LOT	UNIT	% COMM. AREA	
35	671	57	
36	669	43	

679-677 RHODE ISLAND ST. A CONDOMINIUM			
LOT	UNIT	% COMM. AREA	
37	677	53	
38	679	47	