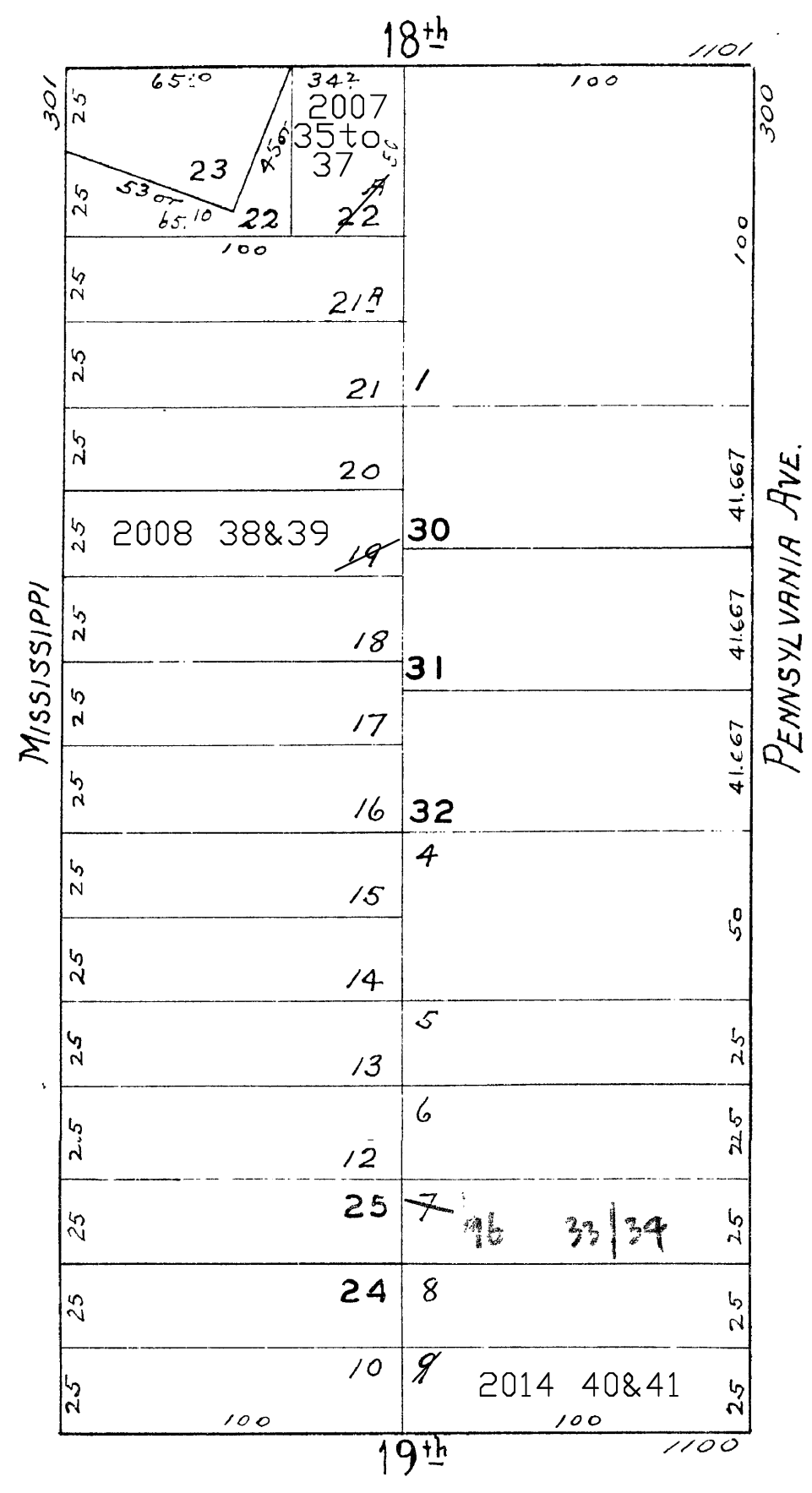
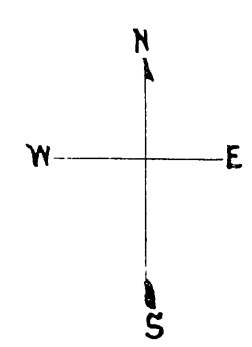


08C
4039

© COPYRIGHT SAN FRANCISCO
CITY & COUNTY ASSESSOR 1996

NEW POTRERO BLK. 304
REVISED '58
REVISED '59
REVISED '60
96
Revised 2007
Revised 2008
Revised 2014

lot22A into lots35to37 for 2007 roll
lot19 into lots38&39 for 2008 roll
lot9 into lots40&41 for 2014 roll



378-380 PENNSYLVANIA AVE.
A CONDOMINIUM

LOT	UNIT	%COMM. AREA
33	378	53.20
34	380	46.80

1125 EIGHTEENTH ST.
A CONDOMINIUM

LOT	UNIT	% COMM. AREA
35	1	23.8
36	2	25.5
37	3	50.7