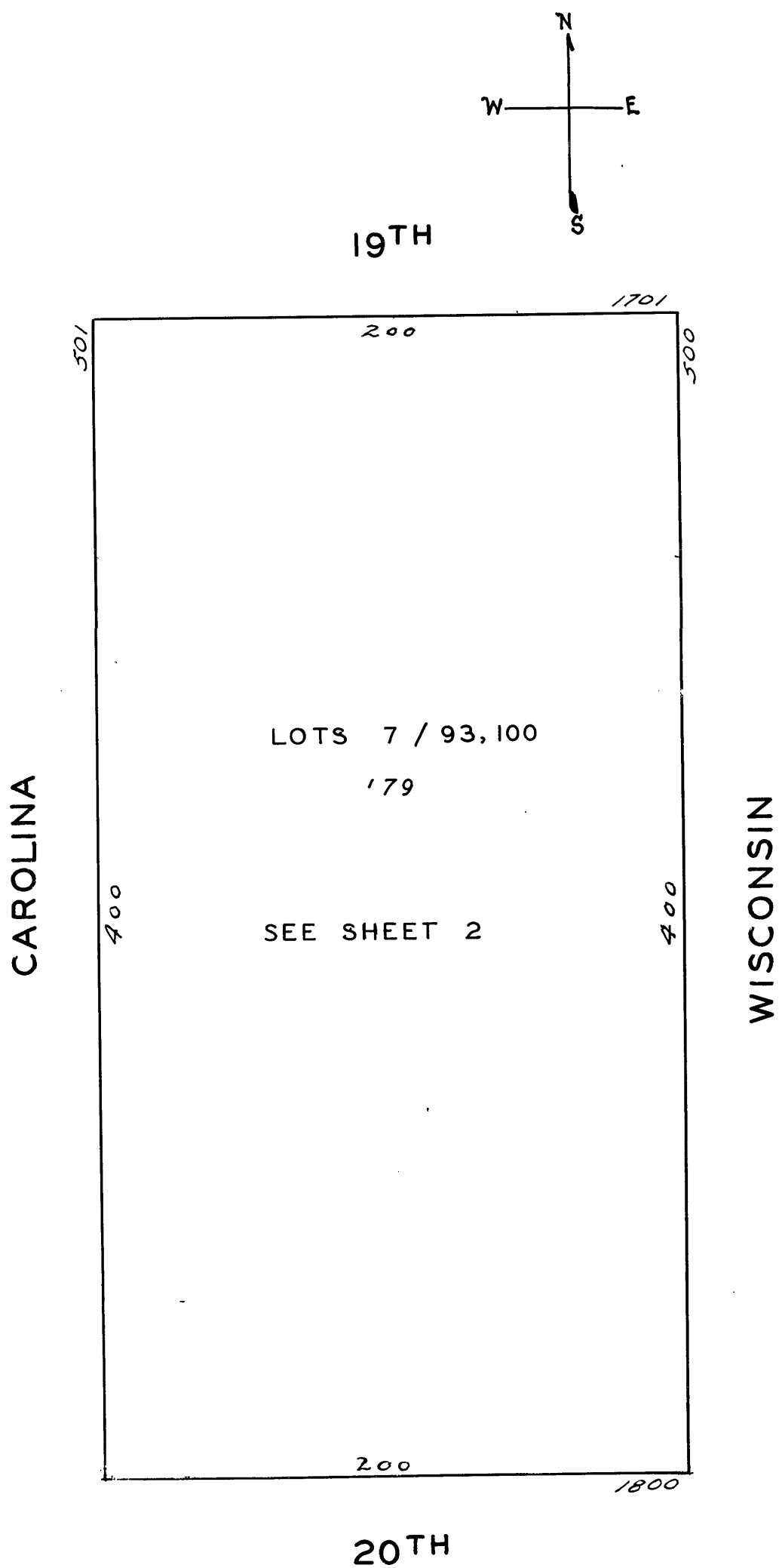
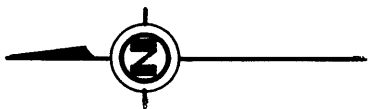


LOTS MERGED
Lots into Lot 19, 46
2/6 " 1

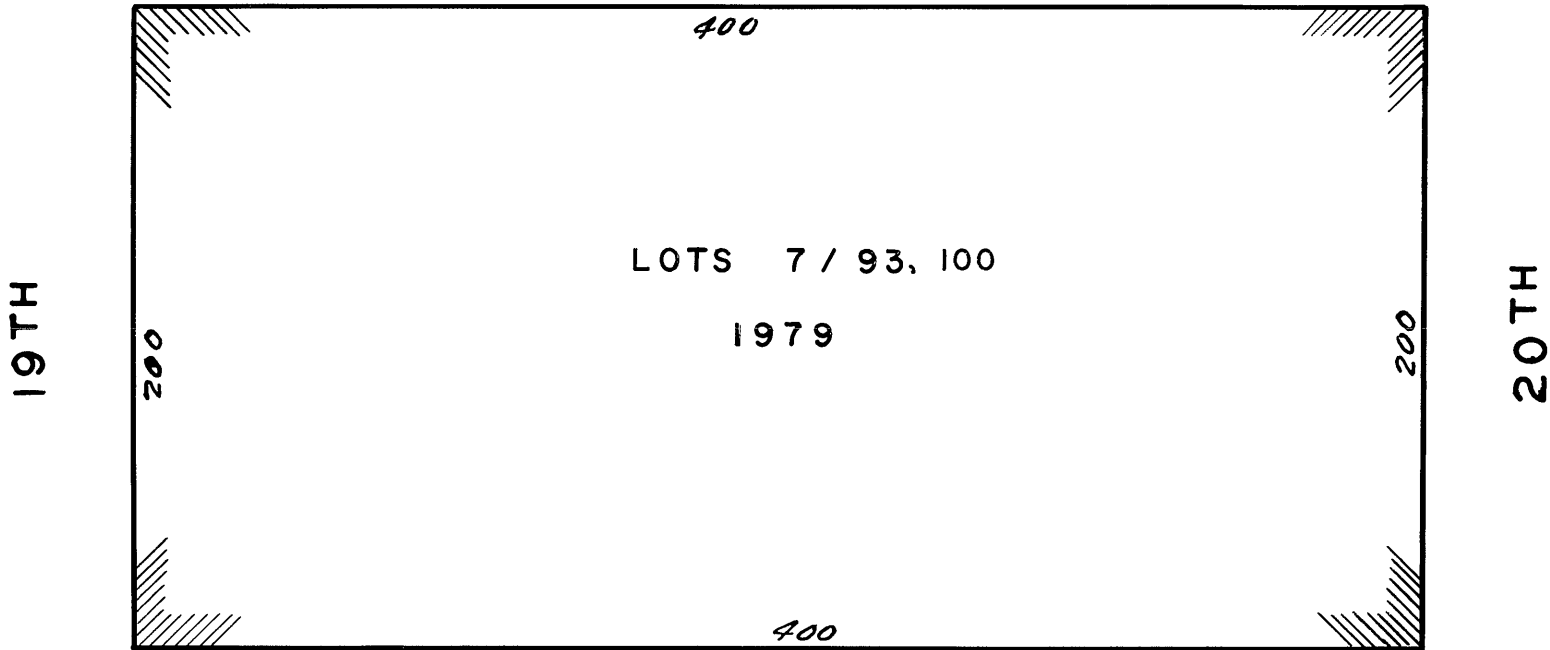


VICTORIA MEWS
A CONDOMNIUM

LOT NO.	UNIT NO.	% COMMON AREA	LOT NO.	UNIT NO.	% COMMON AREA	LOT NO.	UNIT NO.	% COMMON AREA	LOT 100	
									AUXILIARY PARCELS	%COMMON AREA
7	1	0.0110	36	30	0.0110	65	59	0.0108	A-1	0.0014
8	2	0.0111	37	31	0.0108	66	60	0.0117	A-2	0.0014
9	3	0.0113	38	32	0.0110	67	61	0.0108	A-3	0.0013
10	4	0.0110	39	33	0.0115	68	62	0.0108	A-4	0.0013
11	5	0.0111	40	34	0.0090	69	63	0.0108	A-5a	0.00065
12	6	0.0113	41	35	0.0092	70	64	0.0108	A-5b	0.00065
13	7	0.0108	42	36	0.0094	71	65	0.0108	A-6	0.0013
14	8	0.0108	43	37	0.0110	72	66	0.0108	A-7	0.0013
15	9	0.0117	44	38	0.0113	73	67	0.0110	A-8a	0.00065
16	10	0.0108	45	39	0.0125	74	68	0.0110	A-8b	0.00065
17	11	0.0108	46	40	0.0112	75	69	0.0117	A-9	0.0013
18	12	0.0108	47	41	0.0118	76	70	0.0110	A-10	0.0013
19	13	0.0108	48	42	0.0125	77	71	0.0110	A-11	0.0013
20	14	0.0108	49	43	0.0123	78	72	0.0110	A-12a	0.00065
21	15	0.0108	50	44	0.0130	79	73	0.0110	A-12b	0.00065
22	16	0.0110	51	45	0.0135	80	74	0.0110	A-13a	0.0007
23	17	0.0113	52	46	0.0125	81	75	0.0115	A-13b	0.0007
24	18	0.0116	53	47	0.0130	82	76	0.0110	A-14	0.0014
25	19	0.0106	54	48	0.0135	83	77	0.0110	A-15	0.0014
26	20	0.0110	55	49	0.0123	84	78	0.0110	A-16a	0.00065
27	21	0.0110	56	50	0.0130	85	79	0.0110	A-16b	0.00065
28	22	0.0106	57	51	0.0130	86	80	0.0110	A-17	0.0013
29	23	0.0110	58	52	0.0110	87	81	0.0117	A-18	0.0013
30	24	0.0115	59	53	0.0110	88	82	0.0113	A-19	0.0013
31	25	0.0090	60	54	0.0110	89	83	0.0114		
32	26	0.0092	61	55	0.0110	90	84	0.0122		
33	27	0.0110	62	56	0.0110	91	85	0.0113		
34	28	0.0106	63	57	0.0111	92	86	0.0114		
35	29	0.0110	64	58	0.0108	93	87	0.0124		
						100	SEE NEXT COLUMN			



WISCONSIN



CAROLINA