

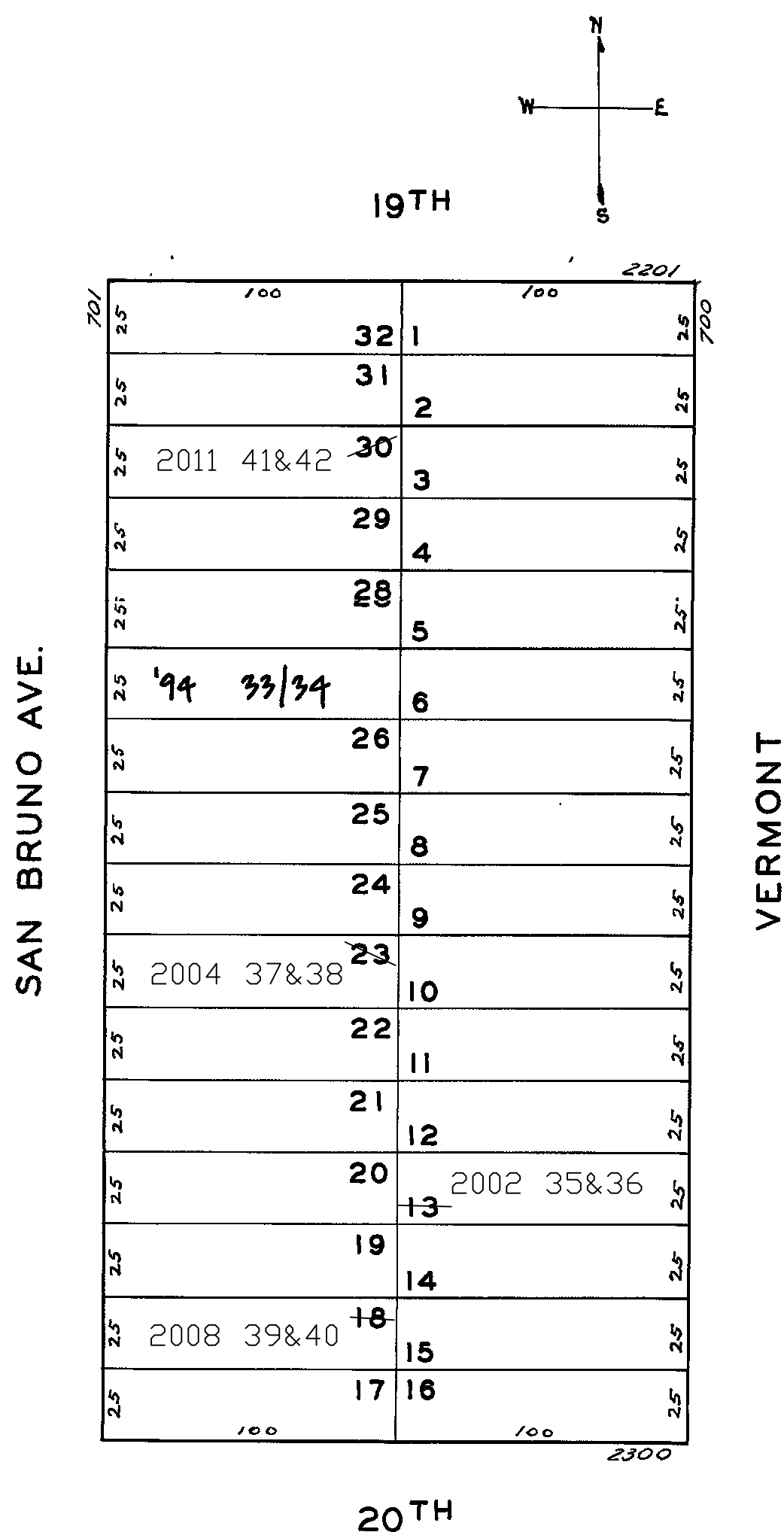
© COPYRIGHT SAN FRANCISCO  
CITY & COUNTY ASSESSOR 1995

4075

NEW POTRERO BLK. 106

REVISED '94

Revised 2002  
Revised 2004  
Revised 2008  
Revised 2011



<u>730 VERMONT ST.</u>			
<u>A CONDOMINIUM</u>			
<u>LOT</u>	<u>UNIT</u>	<u>% COMM.</u>	<u>AREA</u>
35	1		59.25
36	2		40.75

<u>723-727 SAN BRUNO AVE.</u>		
<u>A CONDOMINIUM</u>		
<u>LOT</u>	<u>UNIT</u>	<u>% COMM. AREA</u>
37	723	36.7
38	727	63.3

<u>713-715 SAN BRUNO AVE</u>		
<u>A CONDOMINIUM</u>		
<u>LOT</u>	<u>UNIT</u>	<u>% COMM. AREA</u>
33	713	61.41
34	715	38.59