

20TH

LOTS MERGED

LOT 22 INTO LOT 21 - 1943

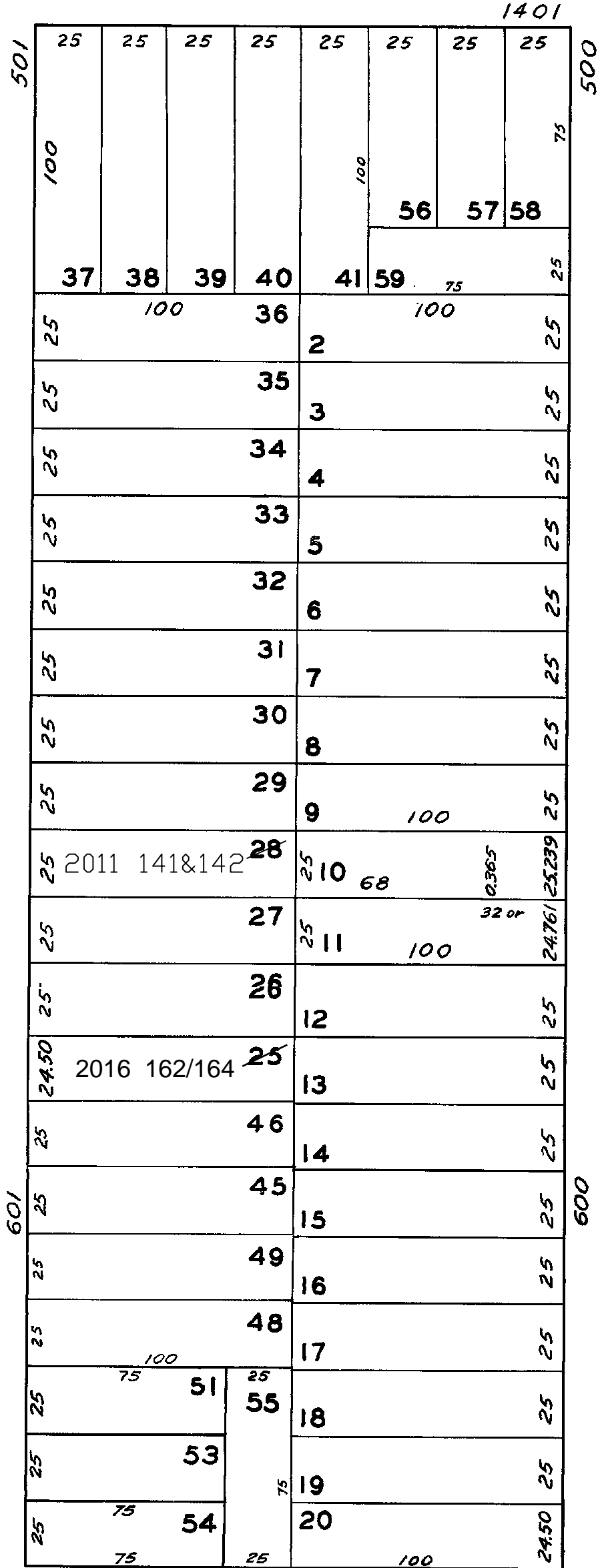
" 24 " " 23 1946
Lat 60, Long 125E Lat 65E, Long 125E

lot60 into lots65to135 for 2007 roll
lot28 into lots141&142 for 2011 roll

**© COPYRIGHT SAN FRANCISCO
CITY & COUNTY ASSESSOR 1995**

Lot 25 into lots 162 to 164 for 2016 roll

25 SIERRA ST.		
A CONDOMINIUM		
LOT	UNIT	% COMM. AREA
65	640TEXAS	1.66
66	650TEXAS	1.81
67	670TEXAS	1.04
68	690TEXAS	2.54
69	101EAST	1.49
70	102EAST	1.38
71	103EAST	0.93
72	104EAST	0.79
73	201EAST	1.23
74	202EAST	1.12
75	203EAST	1.49
76	204EAST	0.89
77	205EAST	0.89
78	206EAST	0.89
79	207EAST	0.89
80	208EAST	0.89
81	209EAST	0.89
82	210EAST	0.89
83	211EAST	0.95
84	301EAST	1.32
85	302EAST	1.18
86	303EAST	1.24
87	304EAST	0.94
88	305EAST	0.94
89	306EAST	0.94
90	307EAST	0.94
91	308EAST	0.94
92	309EAST	0.94
93	310EAST	0.58
94	311EAST	0.66
95	101WEST	1.74
96	102WEST	1.60
97	103WEST	2.22
98	104WEST	3.09
99	105WEST	3.03
100	106WEST	2.67
101	201WEST	1.42
102	301WEST	2.04
103	302WEST	1.80
104	303WEST	1.82
105	304WEST	1.84
106	305WEST	2.02
107	306WEST	1.79
108	401WEST	1.82
109	402WEST	1.61
110	403WEST	1.68
111	404WEST	1.59
112	405WEST	1.86
113	406WEST	1.63
114	501WEST	1.69
115	502WEST	1.43
116	503WEST	1.52
117	504WEST	1.37
118	505WEST	1.67
119	506WEST	1.43
120	605WEST	1.80
121	606WEST	1.57
122	101 55 SIERRA	1.28
123	102 55 SIERRA	0.90
124	201 55 SIERRA	1.36
125	202 55 SIERRA	1.08
126	301 55 SIERRA	1.30
127	302 55 SIERRA	1.09
128	101 75 SIERRA	1.03
129	102 75 SIERRA	1.20
130	201 75 SIERRA	1.03
131	301 75 SIERRA	1.06
132	302 75 SIERRA	1.37
133	401 75 SIERRA	1.06
134	402 75 SIERRA	2.11
135	95 SIERRA	1.10



SIERRA



4101

**NEW POTRERO
BLKS. 265 & 266**

REVISED '58

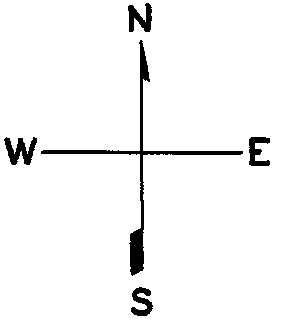
REVISED '59
REVISED '60

REVISED '60
REVISED '62

" '63

" 165
" 180

Revised 2007



Revised 2011
REVISED 2016