

ASSESSOR-RECORDER'S OFFICE

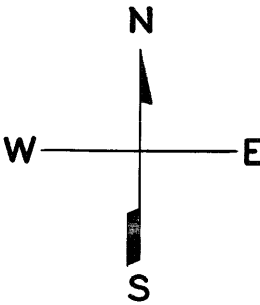
20TH

4103

LOTS MERGED
LOT 28 INTO LOT 27 - 1943
" 39 " " 38 - 1946
lot22 into lots53&54 for 2000 roll
lot52 into lots103&104 for 2001 roll
lot40 into lots105&106 for 2008 roll

© COPYRIGHT SAN FRANCISCO
CITY & COUNTY ASSESSOR 1995

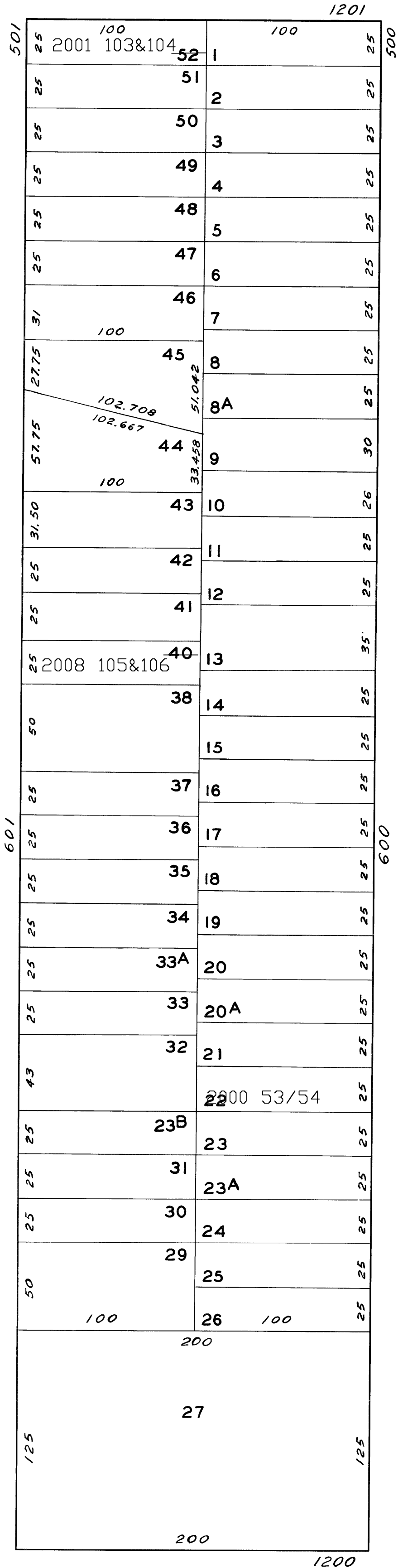
NEW POTRERO
BLKS. 301 & 302
Revised 2000
Revised 2001
Revised 2008



636-638 Pennsylvania Ave.			
A CONDOMINIUM			
LOT	UNIT	% COMM.	AREA
53	636	50	
54	638	50	

501 MISSISSIPPI ST.			
A CONDOMINIUM			
LOT	UNIT	% COMM.	AREA
103	1	49.98	
104	2	50.02	

MISSISSIPPI



PENNSYLVANIA AVE.

22ND