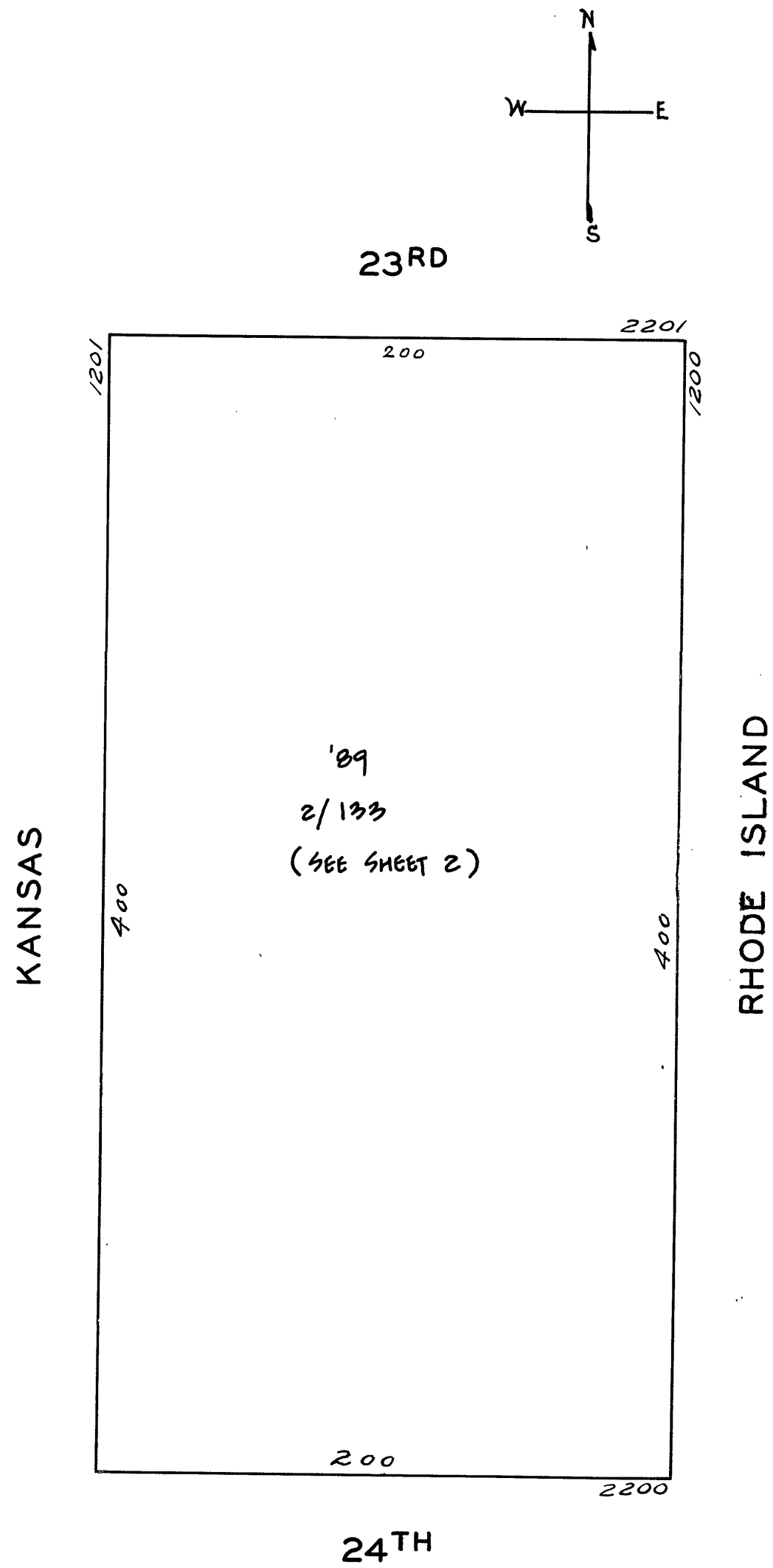


LOTS MERGED
Lots 2/3 into Lot-19-
" " 1 - '46



4216
SHT. 2

POTRERO COURT

2225-23RD ST, 2250-24TH ST & 1200 RHODE ISLAND ST

A CONDOMINIUM

LOT NO.	UNIT NO.	% COMMON	LOT NO.	UNIT NO.	% COMMON
2	1	0.7805	68	219	0.6294
3	2	1.1026	69	220	0.6294
4	3	0.8215	70	221	0.8474
5	4	1.1026	71	222	0.8474
6	5	1.1114	72	223	0.6294
7	6	1.1114	73	224	0.6294
8	7	1.1114	74	225	0.6294
9	8	1.1114	75	226	0.6294
10	9	1.1114	76	227	0.8474
11	10	1.1114	77	228	0.8474
12	11	1.1114	78	229	0.6294
13	12	1.1114	79	230	0.6227
14	13	1.1114	80	231	0.4772
15	14	1.1114	81	232	0.4772
16	15	1.1114	82	233	0.6294
17	16	1.1114	83	234	0.6294
18	17	1.1114	84	235	0.4772
19	18	1.1114	85	236	0.4772
20	19	1.1114	86	301	0.6595
21	20	1.1114	87	302	0.6294
22	21	1.1026	88	303	0.9699
23	22	0.7805	89	304	0.9699
24	23	1.1026	90	305	0.6294
25	24	0.8215	91	306	0.6294
26	101	0.6595	92	307	0.6294
27	102	0.6294	93	308	0.6294
28	103	0.9699	94	309	0.8755
29	104	0.9547	95	310	0.8755
30	105	0.6294	96	311	0.6294
31	106	0.6294	97	312	0.6294
32	107	0.6294	98	313	0.8755
33	108	0.6294	99	314	0.8755
34	109	0.6294	100	315	0.8427
35	110	0.6294	101	316	0.8427
36	111	0.6294	102	317	0.6294
37	112	0.6294	103	318	0.6294
38	113	0.8755	104	319	0.6294
39	114	0.8755	105	320	0.6294
40	115	0.8427	106	321	0.8474
41	116	0.8427	107	322	0.8474
42	117	0.6294	108	323	0.6294
43	118	0.6294	109	324	0.6294
44	119	0.6294	110	325	0.6294
45	120	0.6294	111	326	0.6294
46	121	0.8474	112	327	0.8474
47	122	0.8474	113	328	0.8474
48	123	0.6294	114	329	0.6294
49	124	0.6294	115	330	0.6227
50	201	0.6595	116	331	0.4772
51	202	0.6294	117	332	0.4772
52	203	0.9699	118	333	0.6294
53	204	0.9699	119	334	0.6294
54	205	0.6294	120	335	0.4772
55	206	0.6294	121	336	0.4772
56	207	0.6294	122	425	0.6294
57	208	0.6294	123	426	0.6294
58	209	0.8755	124	427	0.8474
59	210	0.8755	125	428	0.8474
60	211	0.6294	126	429	0.6294
61	212	0.6294	127	430	0.6227
62	213	0.8755	128	431	0.4772
63	214	0.8755	129	432	0.4772
64	215	0.8427	130	433	0.6294
65	216	0.8427	131	434	0.6294
66	217	0.6294	132	435	0.4772
67	218	0.6294	133	436	0.4772