

4262

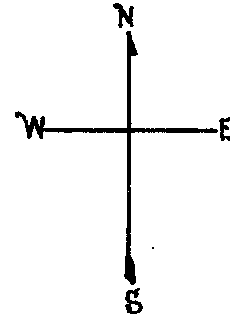
NEW POTRERO BLK. III

REVISED 1970
REVISED 1979
Revised 2007
Revised 2011
REVISED 2018

© COPYRIGHT SAN FRANCISCO
CITY & COUNTY ASSESSOR 1995

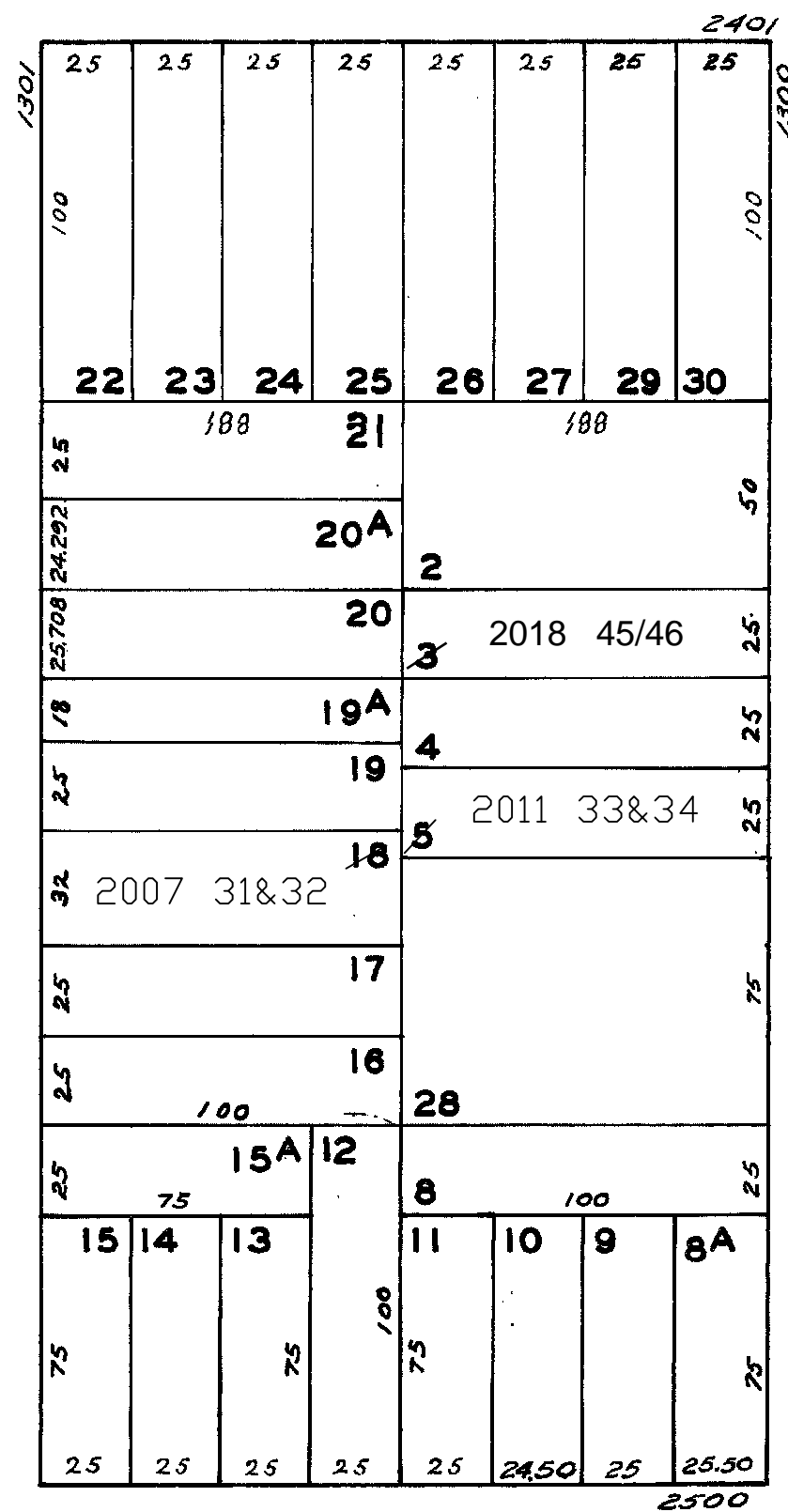
lot18 into lots31&32 for 2007 roll
lot5 into lots33&34 for 2011 roll
Lot 3 into lots 45 & 46 for 2018 roll

LOTS MERGED
11A INTO LOTS 19-
8 "49"



24TH

SAN BRUNO AVE.



VERMONT

25TH

1357 SAN BRUNO AVE.			
A CONDOMINIUM			
LOT	UNIT	% COMM.	AREA
31	1	50.1	
32	2	49.9	