

ASSESSOR-RECORDER'S OFFICE

© COPYRIGHT SAN FRANCISCO
CITY & COUNTY ASSESSOR 1995

lot17 into lots19/36 for 2001 roll

LOTS MERGED	
LOTS	INTO LOT

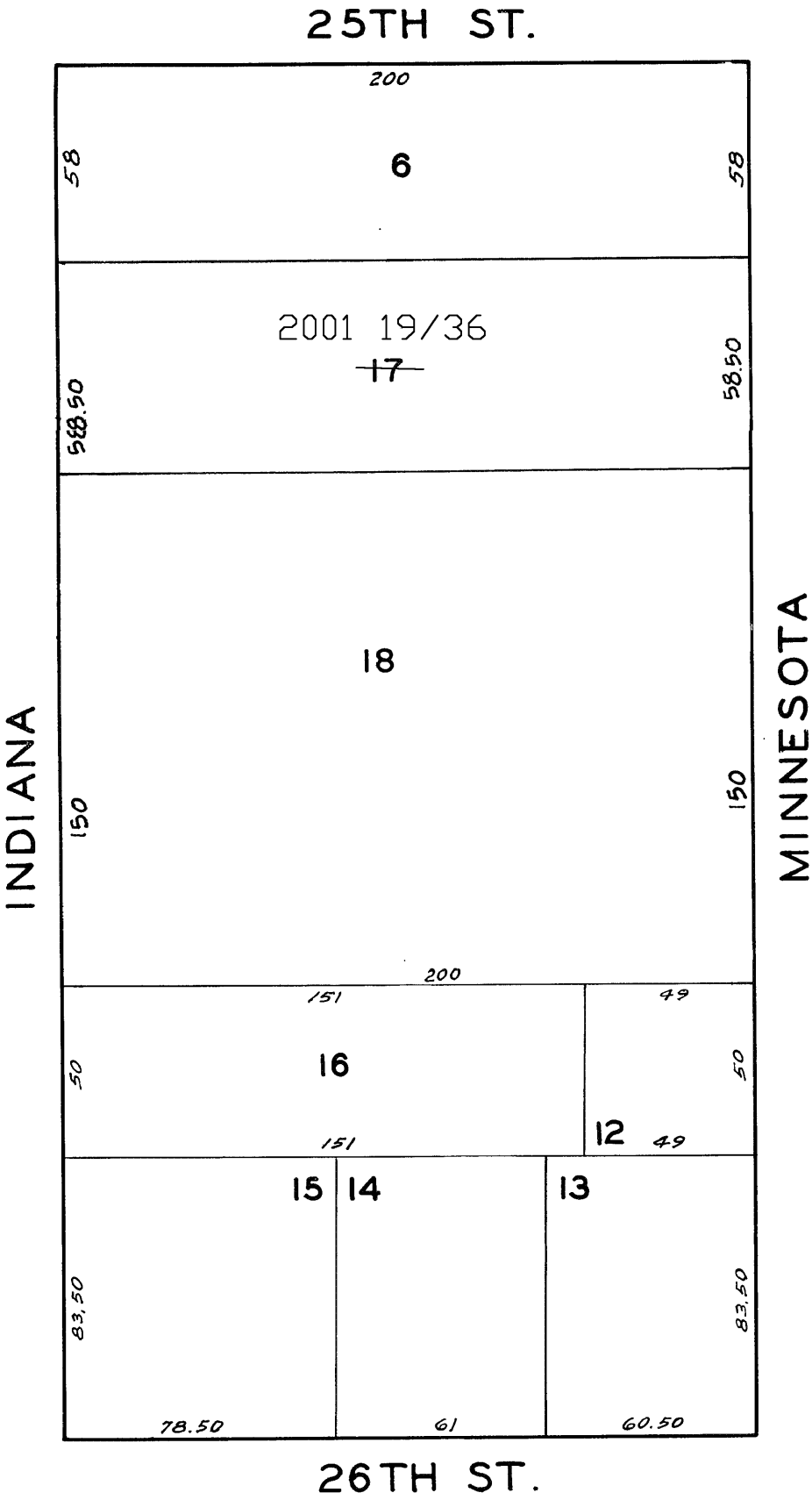
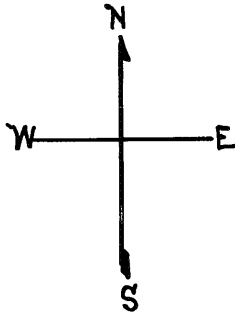
4293

NEW POTRERO BLK.361

REVISED '60
REVISED '62
REVISED '63
" '65

REMOVED '88
" '89

Revised 2001



1415 INDIANA ST.			
A CONDOMINIUM			
LOT	UNIT	% COMM.	AREA
19	101	5.39	
20	102	3.33	
21	103	8.09	
22	104	5.28	
23	105	5.36	
24	106	5.58	
25	201	5.26	
26	202	5.47	
27	203	5.65	
28	204	5.74	
29	205	5.44	
30	206	5.70	
31	301	5.71	
32	302	5.47	
33	303	5.65	
34	304	5.74	
35	305	5.44	
36	306	5.70	